

What is Your Watershed Address?

We all live in a watershed. When it rains in a watershed, the runoff water flows downhill into a stream, lake or ocean. The watershed is the valley or area that drains into a particular water body. When standing on a hilltop, you may be standing on the ridge that separates two watersheds. While fishing along a stream you are at the bottom of a watershed. In addition to a home address with street and town, we also live in a watershed address. A watershed can be large (e.g. the Inland Bays Watershed) or small (e.g. the watershed of a local stream). Knowing what watershed you live in is important because how we use our land has a great influence on the quality of our water resources.



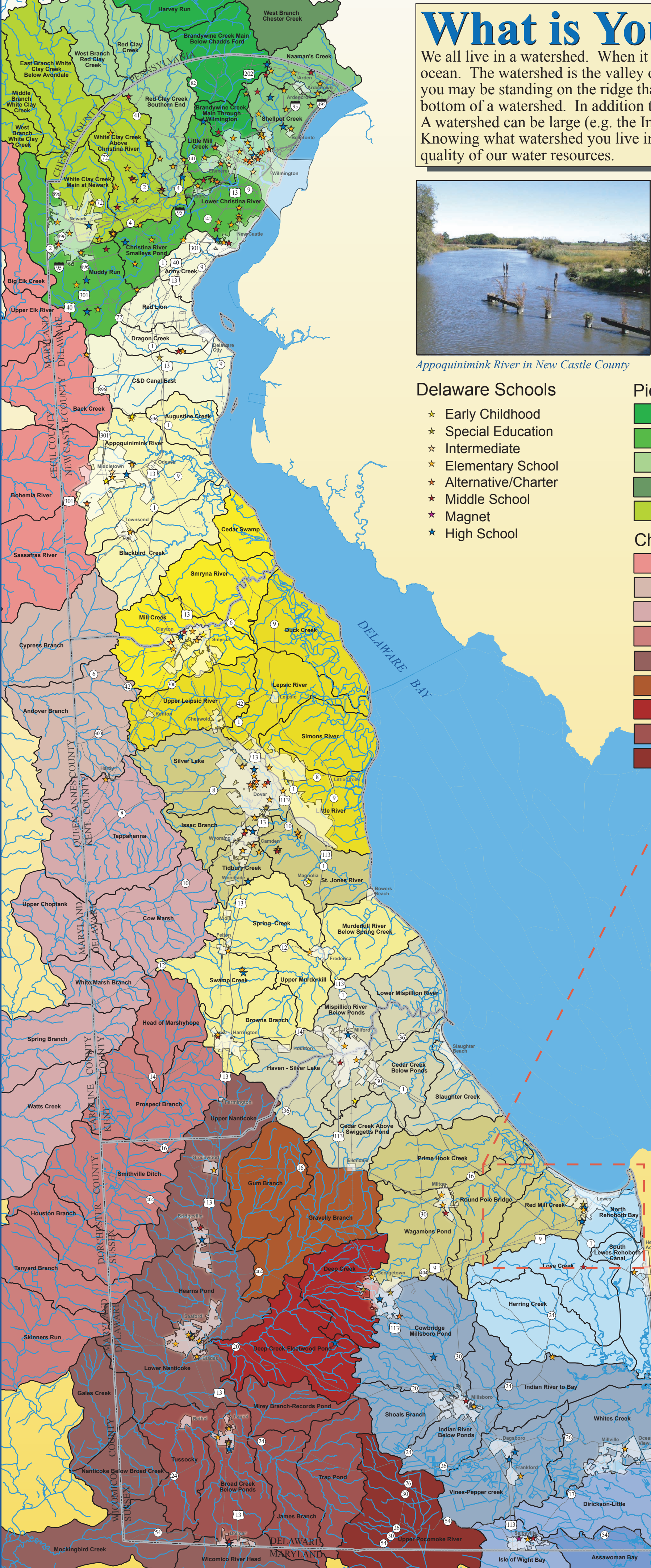
Appoquinimink River in New Castle County



Little River in Kent County



Indian River in Sussex County



Delaware Schools

- ★ Early Childhood
- ★ Special Education
- ★ Intermediate
- ★ Elementary School
- ★ Alternative/Charter
- ★ Middle School
- ★ Magnet
- ★ High School

Piedmont

- Brandywine Creek
- Christina River
- Red Clay Creek
- West Branch Chester Creek
- White Clay Creek

Chesapeake Bay

- Elk River
- Cypress Branch
- Choptank River
- Marshyhope Creek
- Nanticoke River
- Gravelly Branch
- Deep Creek
- Broad Creek
- Pocomoke River

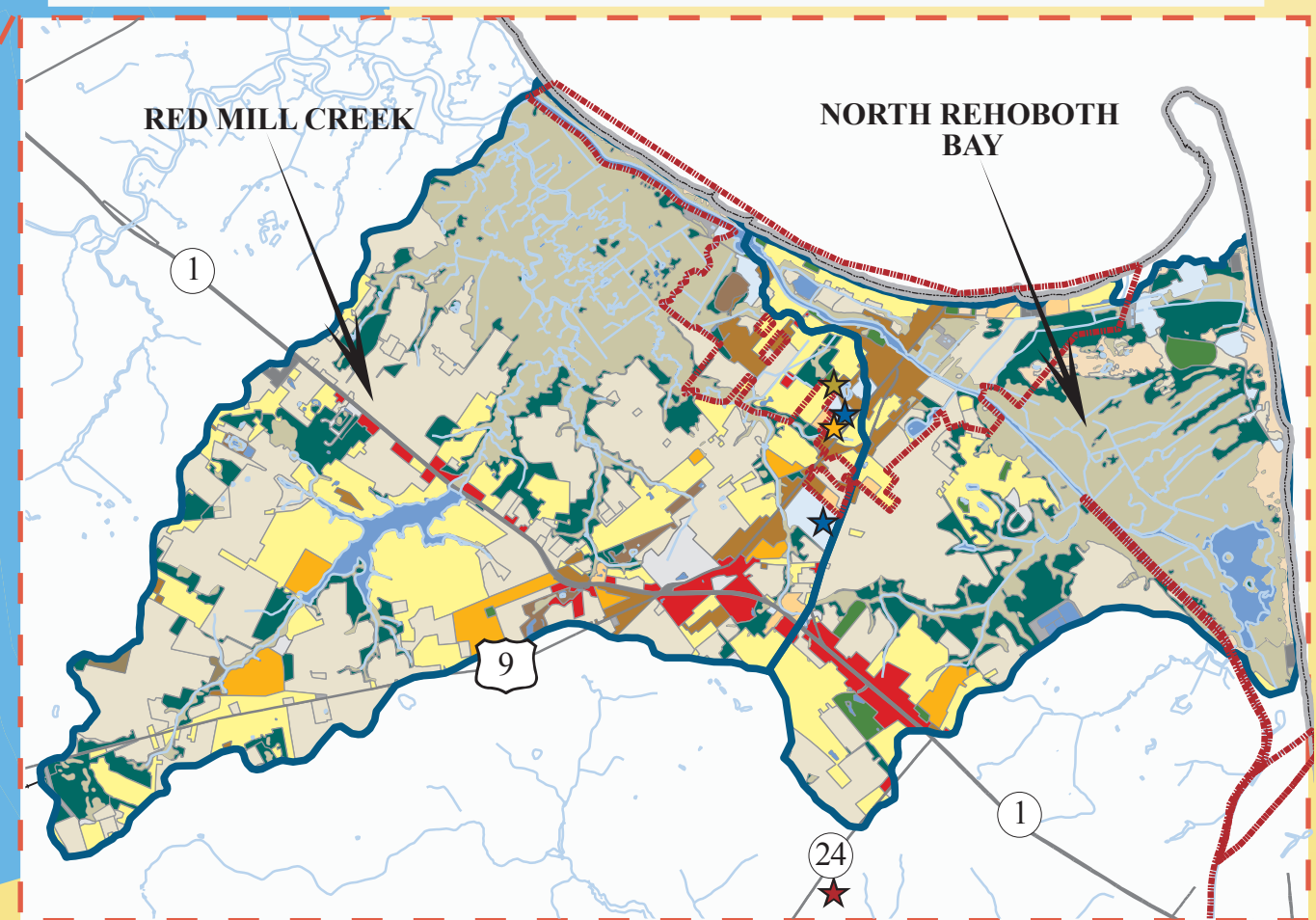
Delaware Estuary

- C&D Canal - Red Lion Creek
- Appoquinimink River
- Smyrna River
- Leipsic River
- St. Jones River
- Murderkill River
- Mispillion River
- Broadkill River

Inland Bays

- Rehoboth Bay
- Indian River Bay
- Inland Bays
- Assawoman Bay

INSET MAP SHOWING TWO WATERSHEDS AND THE 2002 LAND USE



To learn more about Delaware's watersheds visit:

- Christina River Basin - www.wr.udel.edu/publicservice/chbasin.html
- White Clay Watershed Association - <http://mercury.ccil.org/~wcwa/>
- Red Clay Valley Association - www.redclayvalley.org/
- Brandywine Valley Association - www.brandywinewatershed.org
- Center for Inland Bays - www.inlandbays.org
- DNREC Watershed Assessment Section - www.dnrec.state.de.us/water2000/Sections/Watershed/DWRWatershed.htm
- DNREC Whole Basin Management - www.dnrec.delaware.gov/wholebasin



Sources:
 Municipal Boundaries - Delaware Office of State Planning Coordination, February 2006.
 Roads and Railroads - DelDOT 2001. Created from the 1997 Digital Orthophoto Quarter Quads.
 Public Schools - Delaware Department of Education, February 2006.
 Watershed Boundaries - Delaware Department of Natural Resources and Environmental Control, August 2004.

