

Exhibit 1. Public Water Supply System Service Areas in Northern New Castle County

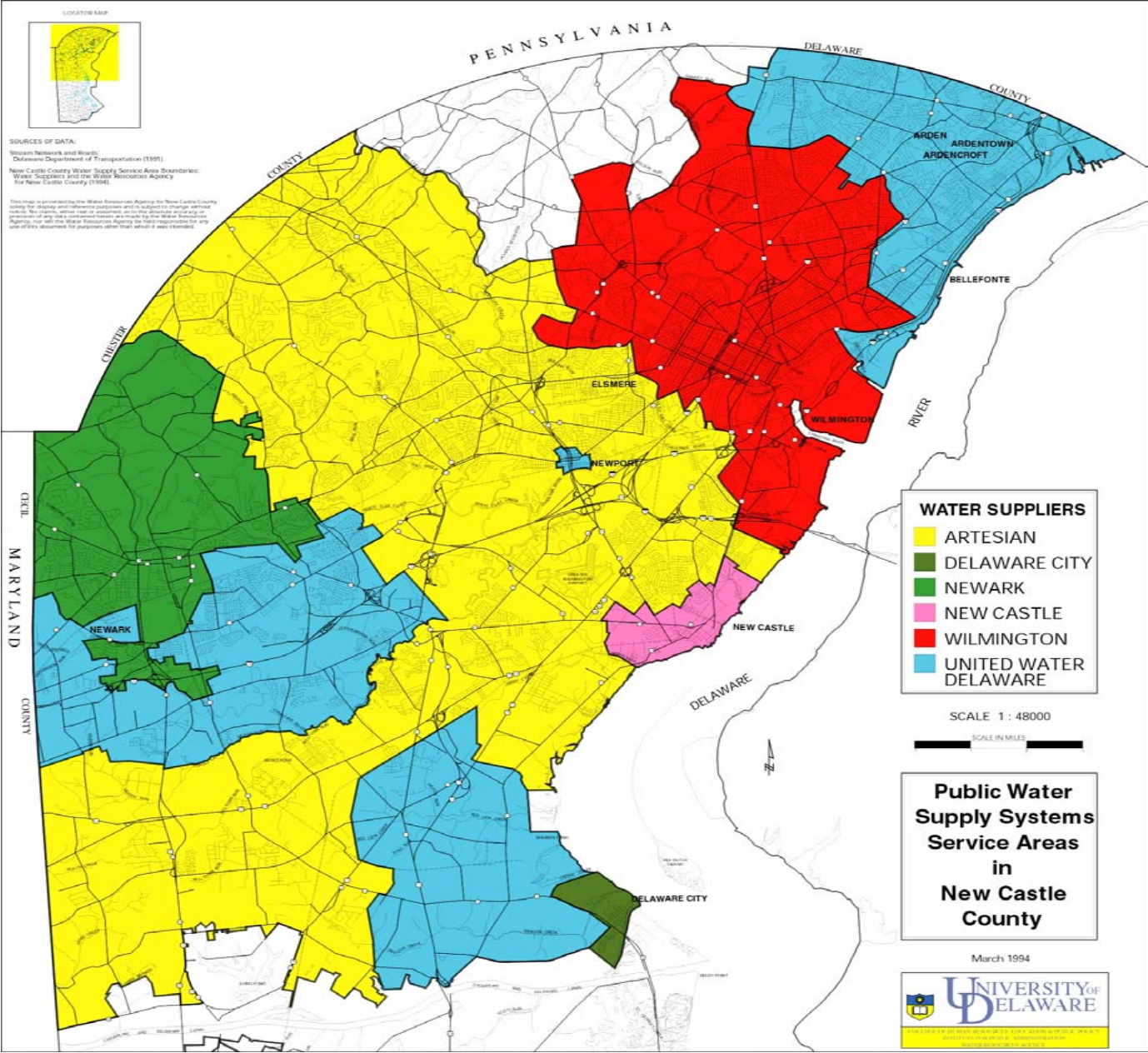


Exhibit 2. Brandywine Creek at Wilmington Stream Flow Data April 2002

Brandywine Creek Streamflow Data, April 2002

*The 7Q10 is the minimum flow necessary to protect fishery and habitat that is likely to occur for 7 consecutive days, once every 10 years

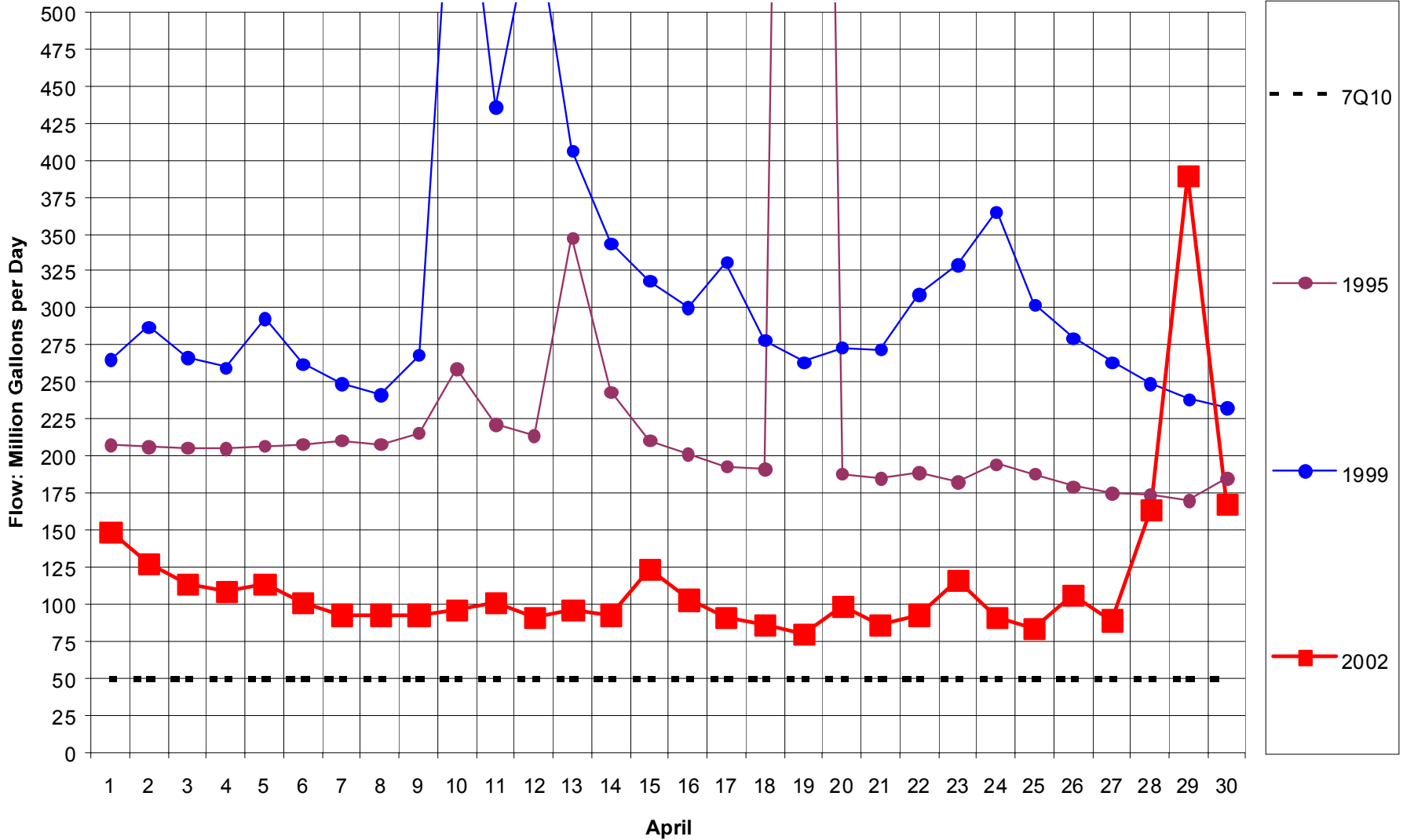


Exhibit 3. White Clay Creek at Stanton Stream Flow Data April 2002

White Clay Creek at Stanton Streamflow Data, April 2002

*The 7Q10 is the minimum flow necessary to protect fishery and habitat that is likely to occur for 7 consecutive days, once every 10 years

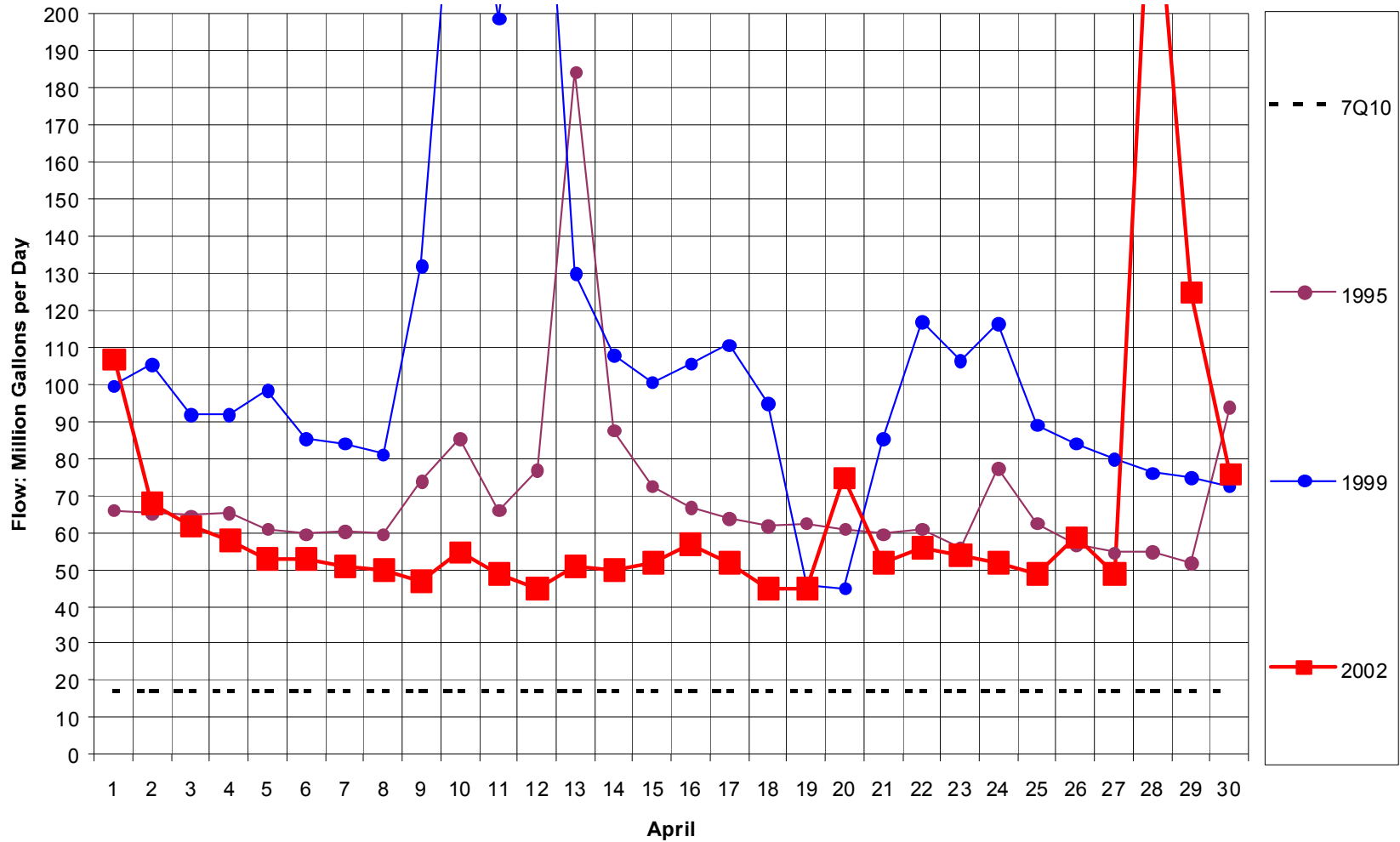


Exhibit 4. White Clay Creek at Newark Stream Flow Data April 2002

White Clay Creek at Newark Streamflow Data, April 2002

*The 7Q10 is the minimum flow necessary to protect fishery and habitat that is likely to occur for 7 consecutive days, once every 10 years

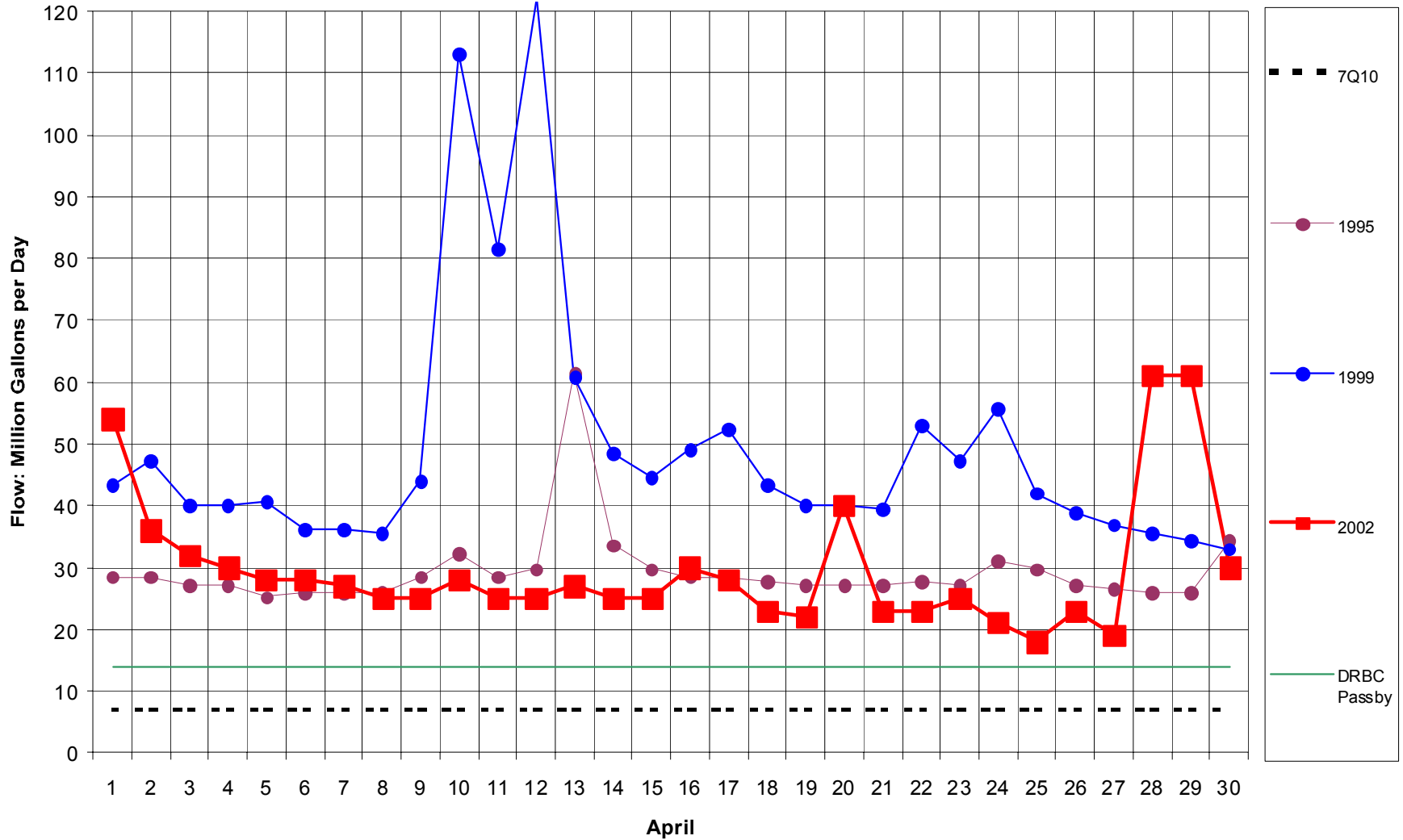


Exhibit 5. DGS Water Conditions Index for New Castle County, Delaware

*Water Conditions Index for New Castle County
October 1998 – April 2002*

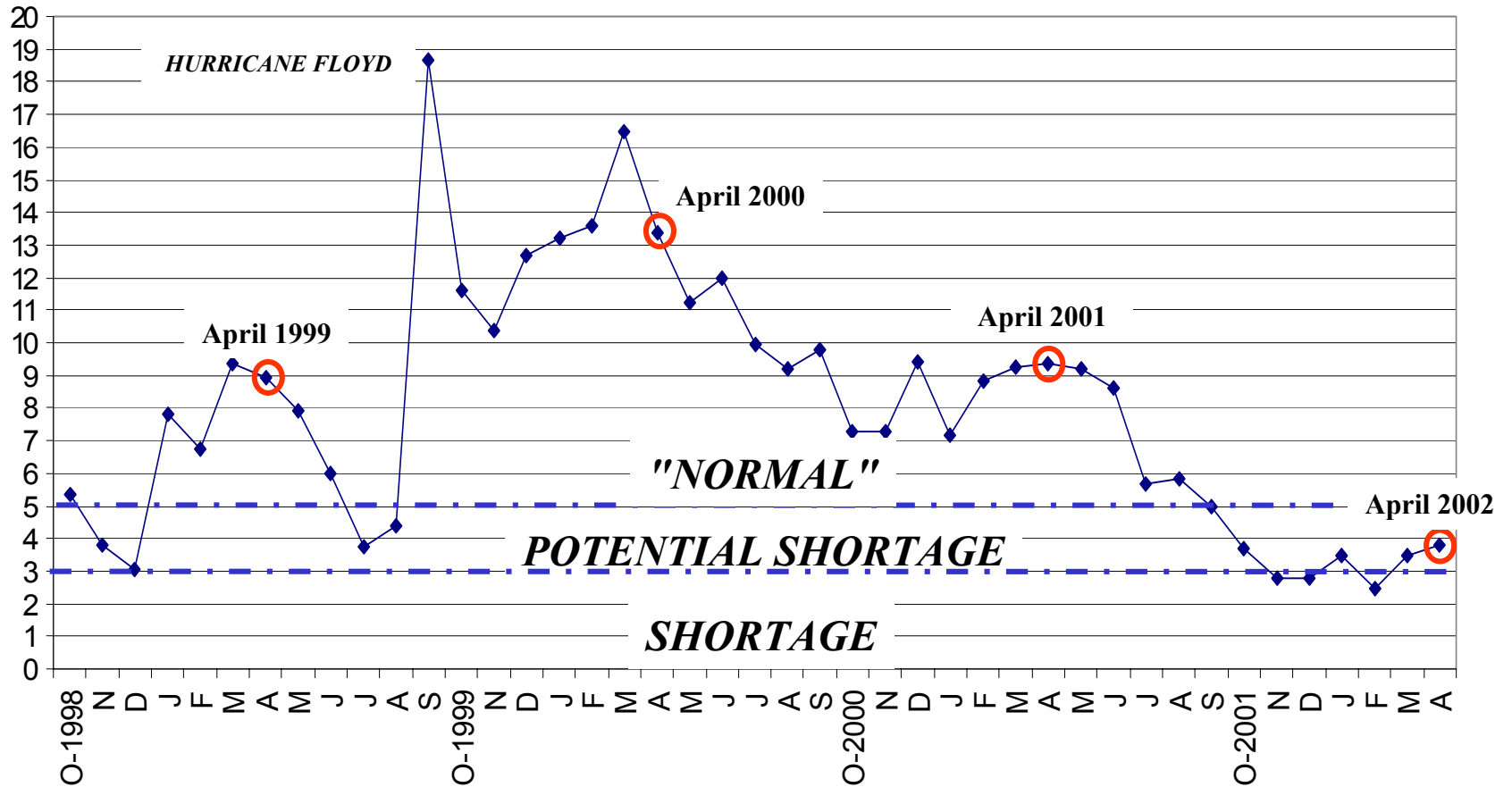
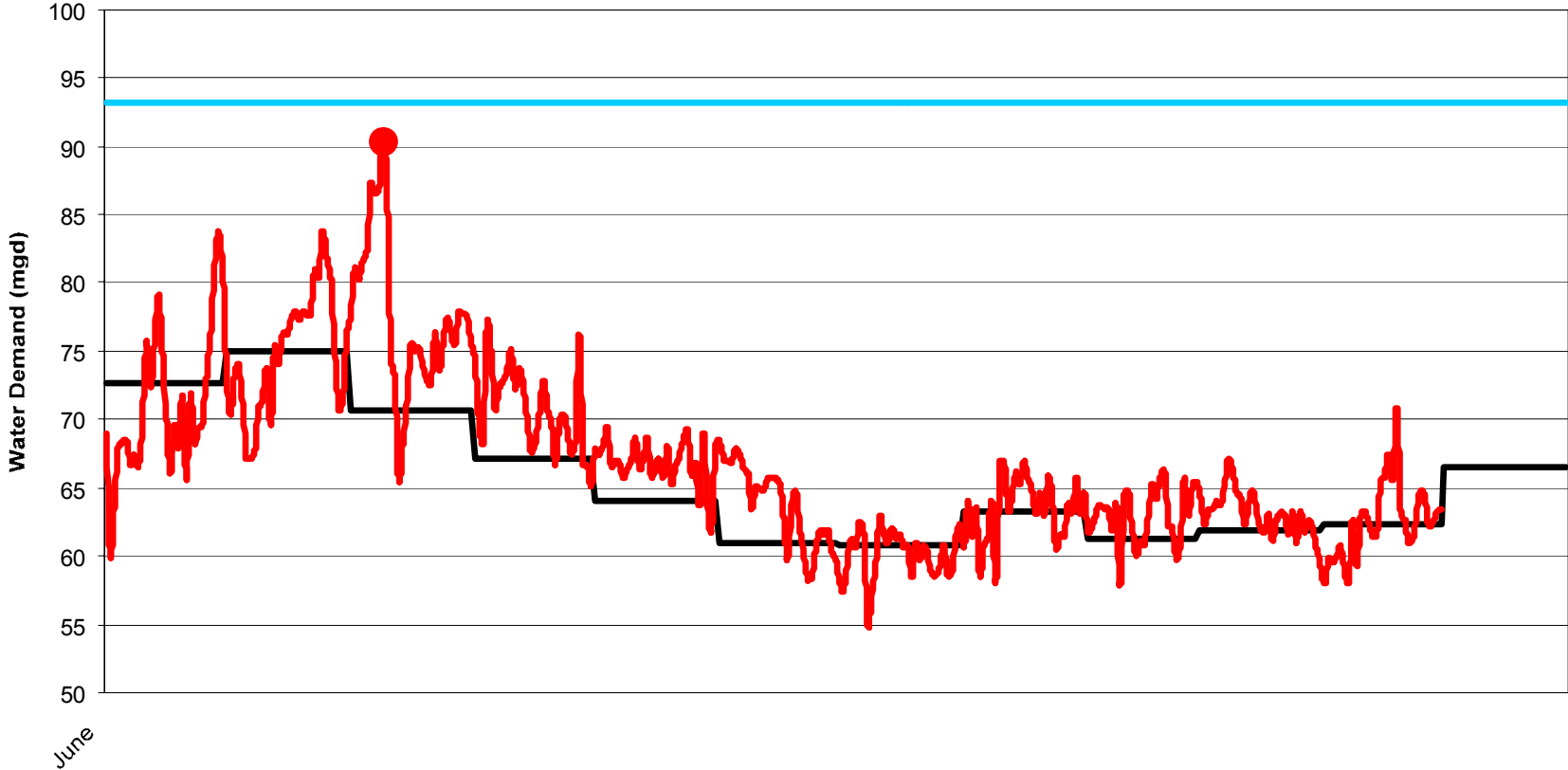


Exhibit 6. Public Water Demand Northern New Castle County, June 2001 - April 2002

Public Water Demand: New Castle County, June 2001 - April 2002

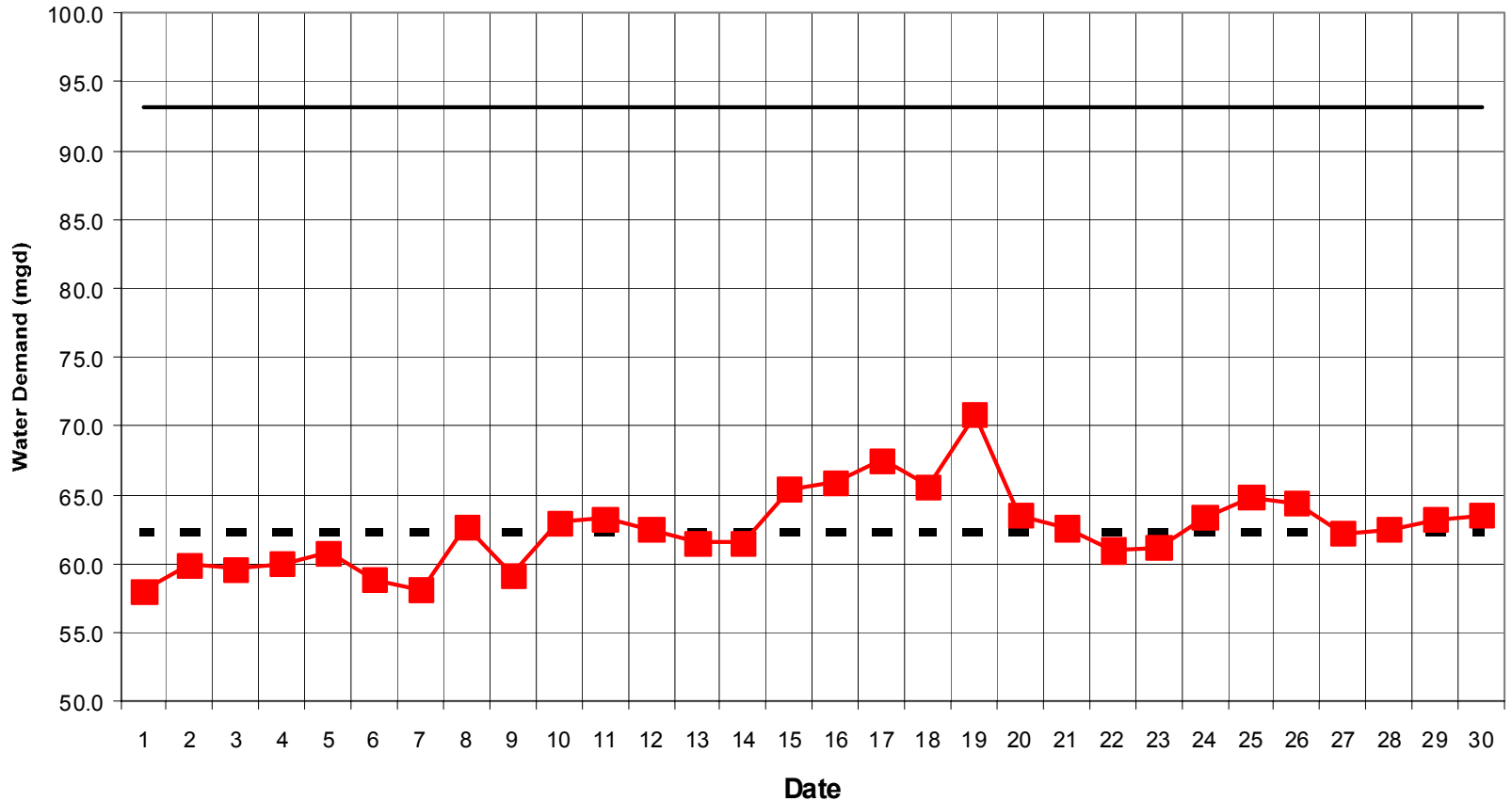


Compiled by the University of Delaware, Institute for Public Administration, Water Resources Agency, using data from: Artesian Water Co., City of Newark, City of Wilmington, New Castle Municipal Services Commission, and United Water Delaware



Exhibit 7. Public Water Demand Northern New Castle County, April 2002

Public Water Demand: New Castle County, April 2002



Compiled by the University of Delaware, Institute for Public Administration, Water Resources Agency, using data from: Artesian Water Co., City of Newark, City of Wilmington, New Castle Municipal Services Commission, and United Water Delaware

■ ■ 'April Normal

— Peak (7/18/97)

—■— 2002

Exhibit 8. Proposed Newark Reservoir (317 mg)

