

Scope of Work

Estimates of Water Supply and Demand for Kent County and Sussex County, Delaware through 2030

June 30, 2009

Prepared by:

Subcommittee of the Delaware Water Supply Coordinating Council

Prepared for:

Delaware Water Supply Coordinating Council

Estimates of Water Supply and Demand for Kent County and Sussex County, Delaware through 2030

ES1. Executive Summary

1. Introduction

- 1.1. Purpose and Scope
- 1.2. Role of Delaware Water Supply Coordinating Council

2. Demographics (UDWRA)

- 2.1. Population
- 2.2. Housing Units
- 2.3. Land Use/Zoning
- 2.4. Comprehensive Plans

3. Hydrogeology (DGS)

- 3.1. Hydrogeologic framework

4. Water Supply Service Areas (UDWRA)

- 4.1. Map CPCNs
- 4.2. Interconnected systems map

5. Groundwater Availability (DGS)

- 5.1. Groundwater availability

6. Water Quality (DNREC, DPH, UDWRA)

- 6.1. Existing water quality
- 6.2. Source water protection

7. Water Supply (DNREC, DGS, DDA, DSGA)

- 7.1. Existing water supplies
 - Public community wells, over 50,000 gpd (Water utilities and Community systems)
 - Public non-community systems (Nontransient/transient wells)
 - Private individual wells
 - Irrigation wells (farms, golf courses, nurseries, wastewater reuse)
 - Industry, power plants

8. Water Demand (UDWRA, DGS, DDA, DSGA)

- 8.1. Existing public water demand
- 8.2. Irrigation water demand
- 8.3. Future water demand
- 8.4. Water supply vs. demand (surplus/deficit)

9. Conclusions/Recommendations

- 9.1. Conclusions
- 9.2. Recommendations

10. Report

Scope of Work
Estimates of Water Supply and Demand for Kent County and Sussex County,
Delaware through 2030
June 30, 2009

Background

The Delaware Water Supply Coordinating Council Act of 2003 authorized the WSCC to:
“develop and publish water supply plans for southern New Castle County, Kent County, and Sussex County. These plans shall identify and describe uses, localities or areas where water supply issues exist and identify and describe localities or areas where future water supply issues may occur. These areas and uses should include, but not be limited to Middletown-Odessa-Townsend, Dover and central Kent County, Coastal Sussex County and agricultural irrigation uses. These plans shall contain an estimate of existing and future public and private water supplies and water demands through 2025. Private demands shall take into account, to the maximum extent practicable, all domestic, industrial and irrigation uses”.

On June 24, 2009, the House of the 145th General Assembly passed Senate Bill 72 that:
“ ... reauthorizes the WSCC plans to develop water supply and demand plans for Kent County and Sussex County through 2030; and (5) extends the existence of the Water Supply Coordinating Council from January 1, 2010 to January 1, 2016”.

In 2008, the water supply plan for southern New Castle County was transmitted as the 9th Report to the Governor and General Assembly Regarding the Progress of the Delaware Water Supply Coordinating Council. The WSCC decided to estimate water supply and demands in Kent and Sussex Counties beginning with a base year of 2010 and then project 20 years out through 2030, instead of 2025.

On May 5, 2009, the WSCC approved a draft outline for the Kent County and Sussex County water supply plan and authorized a subcommittee to prepare a scope of work due by June 30, 2009. The intention is to begin work during the summer of 2009 with a goal to complete the plan by December 2010, a period of 18 months. The plan will be transmitted as the 11th or 12th Report to the Governor and General Assembly Regarding the Progress of the Delaware Water Supply Coordinating Council.

This scope of work was prepared by the following WSCC subcommittee:

Bruce Kraueter	Artesian Water Co.
Richard Krautz	Sussex County
Mary Ellen Gray	Kent County
Rick Duncan	Delaware Rural Water Association
Tom Roth	Town of Henlopen Acres (Sussex County Association of Towns, SCAT)
Kelly Glenn	Sussex Shores Water Co.
Ed Hallock	Delaware Division of Public Health
Stewart Lovell	Delaware DNREC, Division of Water Resources
Laura Mensch	Delaware Department of Agriculture
Sheila Shannon	Tidewater Utilities
Jonathan Urbanski	Delaware State Golf Association
John Talley	Delaware Geological Survey
Scott Andres	Delaware Geological Survey
Gerald Kauffman	University of Delaware - Water Resources Agency
Martin Wollaston	University of Delaware - Water Resources Agency

Scope of Work

ESI. Executive Summary

A four page executive summary will be prepared to be transmitted to the Governor and General Assembly, County Administrator and Levy Court of Kent County, County Administrator and Council of Sussex County, and Mayors and Councils of the municipalities in both Counties.

1. Introduction

1.1. Purpose and Scope – The purpose of this work is to prepare a water supply plan for Kent and Sussex Counties including estimates of water supply and demand through 2030. Water demand in these counties is expected to increase with increased development and population over the next 20 years. This water supply plan is designed to address anticipated increased water demands due to planned, new development while protecting the water rights of the agricultural community.

1.2. Role of Delaware Water Supply Coordinating Council (UDWRA) - In August 2003 Governor Minner signed HB 203 which reauthorized the Delaware Water Supply Coordinating Council to January 1, 2010, expanded the WSCC to include statewide representation, and appointed the Delaware Geological Survey and University of Delaware Water Resources Agency as voting members. The WSCC was originally created in July 2000 when Governor Carper signed House Bill 549 which appointed the committee members and designated the UDWRA as State Water Coordinator (Temporary Water Coordinator for New Castle County). HB 549 also appointed the DGS, DNREC, and UDWRA to serve as technical advisors to the WSCC. On June 24, 2009, the House of the 145th General Assembly passed Senate Bill 72 extending the role of the WSCC through January 1, 2016.

2. Demographics

2.1. Population (UDWRA) – Gather population data for 2005, 2010, 2020, and 2030 from the Delaware Population Consortium compiled by the University of Delaware Center for Applied Demography and Survey Research (CADSR). Include population data from the 2010 U. S. Census. Projected residential water demands through 2030 will be based on population projections. As of October 2008, the population of Kent County is projected to increase 20% from 159,980 in 2010 to 190,867 by 2030. The population of Sussex County is projected to increase 38% from 197,313 in 2010 to 272,313 by 2030.

2.2. Housing Units (UDWRA) – Gather housing unit data and projections through 2030 from CADSR and from the County Comprehensive Plans to estimate per dwelling water use.

2.3. Land Use/Zoning (UDWRA) – Map and compile land use/land cover from 2007 digital orthophotographs prepared by the State of Delaware and from the County Comprehensive Plans. Obtain zoning mapping from County Comprehensive Plans to estimate future land uses through 2030 as a way to project future water needs.

2.4. Comprehensive Plans (UDWRA) – Obtain demographic and planning data from and integrate with the Kent County (adopted October 2008) and Sussex County (adopted June 2008) Comprehensive Plans. Integrate the water supply plan with the comprehensive plans of the following municipalities:

Bethany Beach	Harrington	South Bethany
Bridgeville	Laurel	Wyoming
Camden	Lewes	Viola
Cheswold	Milford	
Clayton	Millsboro	
Dagsboro	Millville	
Delmar	Milton	
Dewey Beach	Ocean View	
Dover	Rehoboth Beach	
Fenwick Island	Seaford	
Georgetown	Selbyville	
Greenwood	Smyrna	

3. *Hydrogeology*

3.1. Hydrogeology (DGS) – Summarize the hydrogeologic framework of Kent and Sussex Counties which will include cross-sections, isopoch maps, and areas of potential use of each aquifer. The DGS will utilize data from many of the published reports for this area of the Coastal Plain including:

Ground-Water Geology of the Delaware Atlantic Seashore (Report of Investigations No. 17)

Results of the Coastal Sussex County, Delaware, Ground-Water Quality Survey (Report of Investigations No. 49)

Wellhead Protection Area Delineations for the Lewes-Rehoboth Beach Area, Delaware (Report of Investigations No. 65)

Ground-Water Recharge Potential Mapping in Kent and Sussex Counties, Delaware (Report of Investigations No. 66)

Geology and Extent of the Confined Aquifers of Kent County, Delaware (Report of Investigations No. 72)

Basic Hydrologic Data for Coastal Sussex County, Delaware (Special Pub. 14)

4. *Water Supply Service Areas*

4.1. Map water supply service areas, CPCNs (UDWRA) – Update and map the water supply service areas as delineated by Certificates of Public Convenience and Necessity (CPCNs) approved by the Public Service Commission. Approved public water supply service areas in Kent and Sussex Counties include:

Kent County

Artesian Water Company
Camden- Wyoming Sewer
Clayton
Dover
Felton
Frederica

Sussex County

Artesian Water Company
Bethany Beach
Blades
Bridgeville
Dagsboro
Delmar

Harrington
J.H. Wilkerson & Son
Magnolia
Milford
Pickering Beach Water
Smyrna
Tidewater Utilities

Frankford
Georgetown
Greenwood
J.H. Wilkerson & Son
Laurel
Lewes Board of Public Works
Long Neck Water Company
Milford
Millsboro
Milton
Rehoboth
Seaford
Selbyville
Sussex County Council
Sussex Shores Water Company
Tidewater Utilities

4.2. Interconnected system map (UDWRA) – Gather information from the water purveyors and prepare a regional, interconnected system map using GIS depicting water lines, interconnections, water tanks, and pumps, and other infrastructure.

5. *Groundwater Availability*

5.1. Groundwater availability (DGS) – Utilize existing reports and data to determine current groundwater use and availability (mgd) by aquifer. Compile information on hydraulic characteristics of each aquifer to determine adequacy for evaluating future availability. Conduct analysis to determine additional data needs.

6. *Water Quality*

6.1. Existing water quality (DNREC, DPH, and UDWRA) - Conduct a literature review using DGS, USGS, and Division of Public Health sources. Summarize existing water quality of groundwater in Kent and Sussex Counties for parameters such as nutrients, radon, bacteria, and chlorides. Compare groundwater quality to Delaware drinking water standards.

6.2. Source water protection (DNREC) - Summarize source water protection programs implemented by governments with year round populations over 2000 in complying with the Delaware Source Water Protection Law of 2001.

7. *Water Supply*

7.1. Existing water supplies (DNREC, DGS, DDA, and DSGA) - Research DNREC Division of Water Resources and Delaware Geological Survey records and tabulate existing water usage (mgd) for the following well categories:

- Public community wells (over 50,000 gpd)
 - Water utilities
 - Community systems
- Public non-community systems

- Nontransient/transient wells
 - Private individual wells
 - Irrigation wells (farms, golf courses, nurseries, wastewater reuse)
 - Industry, power plants

The DNREC Source Water Protection Program has compiled a database of public water supply wells in Delaware (excerpt enclosed) that lists public water supplies in Kent and Sussex Counties with data such as date drilled, capacity, diameter, and depth of well.

FACILITY NAME	DNREC ID	County	PWS Type	Date Drilled	Capacity	Diameter
ALLEN FREAR ELEMENTARY	10785	K	NTNC	29-Aug-66	72	
Aquatic Resources Center	96384	K	TNC	21-Jul-93	30	4
Baltimore Air Coil	44263	K	NTNC	12-Oct-79	115	6
Baltimore Aircoil	33547	K	NTNC	13-Jul-75	30	4
Barnacle Bills Rest.	90048	K	TNC		0	-1
Blanton's MHP	10709	K	C		0	4
Bombay Hook	34919	K	TNC		0	-1
Boon Docks Rest.	52434	K	TNC	15-Dec-82	30	2
Bowers MHP	10774	K	C		0	-1
Camden District	34788	K	C	01-Mar-76	50	6
Camden District	38796	K	C	31-Oct-77	100	8
Camden-Wyoming	10077	K	C	01-Oct-52	400	10
Camden-Wyoming	10078	K	C	07-May-69	600	6
Camden-Wyoming Moose Lodge	10948	K	TNC		0	-1
Canterbury Crossing	67712	K	C	14-Apr-87	250	8

Note: Abbreviated table

8. Water Demand

8.1. Existing public water demand (UDWRA, DGS) - Calculate existing 2010 water demands (normal and maximum monthly peak) using a computerized monthly report forms maintained by DNREC and filled out by the water purveyors. Obtain per capita use estimates of water demand and verify estimates using population and housing unit data. Verify estimates of water demand with wastewater projections contained in the County comprehensive plans.

8.2. Irrigation water demand (DGS, DNREC, DDA, DSGA) – Work with the Delaware Department of Agriculture and the Delaware State Golf Association to estimate irrigation water demands. According to the 2007 Census of Agriculture (USDA) compiled by the DDA, total land in farms has decreased but irrigated land has increased between 2002 and 2007. Agricultural land and need for irrigation may increase in the future due to development of new specialty crops. Discuss new efforts to utilize treated wastewater on farms and efforts to increase agriculture irrigation in order to reduce pollutant run-off.

Kent County

Land in farms (ac)		<u>%</u>
2002	182,329	
2007	173,808	-6%

Irrigated land (ac)

2002	29,039	
2007	29,066	+0.09%

Sussex County

Land in farms (ac)		<u>%</u>
2002	283,503	
2007	269,464	-5%

Irrigated land (ac)

2002	65,491	
2007	72,785	+11%

The DSGA is compiling a list of irrigation well data at the following golf courses.

Kent County

Garrison Lake
Eagle Creek
Maple Dale
Wild Quail
Jonathan's Landing

Sussex County

Bear Trap Dunes
Sussex Pines
Cripple Creek
The Rookery
Salt Pond
Rehoboth CC
Kings Creek
Shawnee
The Peninsula
Baywood Greens
Bethany Bay
Bayside Resort

8.3. Future water demand (UDWRA) – Estimate future water demands for 2020 and 2030. Future public water supply demands will be based in part on population projections by census block, water purveyor, and municipality and future land use projections in town and county comprehensive plans.

8.4. Comparison of Supply and Demand (UDWRA) - Compare existing water supply to current and future demand to determine whether surplus or deficits are projected in the future through 2030

9. Conclusions/Recommendations

9.1. Conclusions

9.2. Recommendations

10. Report

Publish 200 copies of the final report for transmittal to the Governor, General Assembly, and Kent County and Sussex County elected and appointed officials.

Schedule

<u>Task</u>	<u>Milestone</u>
Commence work	Jul 2009
1. Introduction	Sep 2009
2. Demographics	Oct 2009
3. Hydrogeology	Nov 2009
4. Water Supply Service Areas	Nov 2009
5. Groundwater Availability	Dec 2009
6. Water Quality	Jan 2010
7. Water Supply	Apr 2010
8. Water Demand	May 2010
10. Conclusions/Recommendations	Jun 2010
10. Draft Report	Jul 2010
Final Report	Dec 2010

Delaware Population Consortium

Population Projection Series

October 31, 2008

Kent County
Total Population

[As of July 1]

	2000	2005	2010	2015	2020	2025	2030
Population	127108	143473	159980	169356	177817	184748	190867
Households	47226	54011	61054	65427	69449	72783	75517
Population Change*	16365	16507	9376	8461	6931	6119	
Births*	9743	11028	11843	12041	12134	12363	
Deaths*	5626	6291	7260	8136	9036	9957	
Net Migration*	12248	11770	4793	4556	3833	3713	
Household Change*	6785	7043	4373	4022	3334	2734	
Total Labor Force	66998	74158	81010	83946	86422	88424	90501
Civilian	63919	72158	79010	81946	84422	86424	88501
Employed	61650	69635	75850	78668	81045	82967	84961
Private	44127	49842	54290	56308	58010	59385	60812
Government	13818	15608	17001	17632	18165	18596	19043
Self-Employed	3542	4001	4358	4520	4656	4767	4881
Unpaid Family	163	184	201	208	214	219	225
Unemployed	2269	2523	3160	3278	3377	3457	3540
Military	3079	2000	2000	2000	2000	2000	2000
Jobs by Place of Work	55300	65000	71027	74442	76693	79329	81234
Jobs by Residence	56102	66153	72057	75521	77804	80478	82411
Net Commuting	-802	-1153	-1030	-1079	-1111	-1149	-1177

* Represents a five-year total

Delaware Population Consortium

Population Projection Series

October 31, 2008

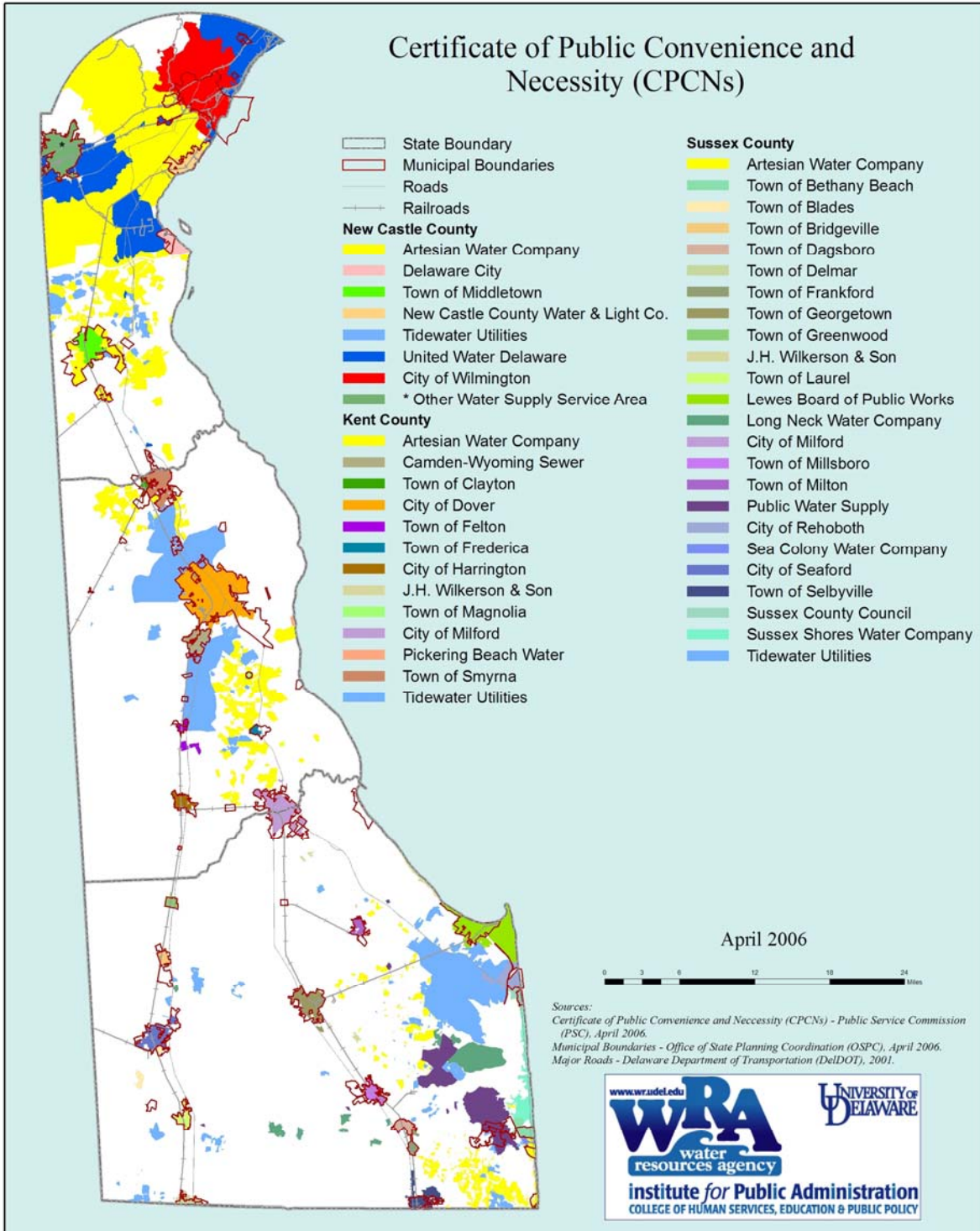
Sussex County
Total Population

[As of July 1]

	2000	2005	2010	2015	2020	2025	2030
Population	157463	176189	197313	217802	237278	255674	272313
Households	62937	72371	81016	88917	96535	103613	109260
Population Change*	18726	21124	20489	19476	18396	16639	
Births*	9780	12350	13673	14420	15148	16690	
Deaths*	9054	9405	11653	13948	16100	18198	
Net Migration*	18000	18179	18469	19004	19348	18147	
Household Change*	9434	8645	7901	7618	7078	5647	
Total Labor Force	80209	90235	86146	91015	96013	101638	107853
Civilian	80045	90071	85982	90851	95849	101474	107689
Employed	77297	86869	82543	87217	92015	97415	103381
Private	59800	67205	63858	67475	71186	75364	79979
Government	11138	12517	11894	12567	13259	14037	14897
Self-Employed	6201	6969	6622	6997	7382	7815	8294
Unpaid Family	158	178	169	178	188	199	211
Unemployed	2748	3202	3439	3634	3834	4059	4308
Military	164	164	164	164	164	164	164
Jobs by Place of Work	67541	75905	72125	76209	80401	85119	90333
Jobs by Residence	74978	84263	80066	84601	89254	94492	100279
Net Commuting	-7437	-8358	-7941	-8392	-8853	-9373	-9946

* Represents a five-year total

Certificate of Public Convenience and Necessity (CPCNs)



PRESERVE

CHARACTER

LAND

WATER

RESOURCES

HISTORY

CULTURE

OPPORTUNITY

FARM LAND

GROWTH

SAFETY

ENVIRONMENT

LIVE

WORK

SHOP

LEARN

PLAY

2007

ADOPTED

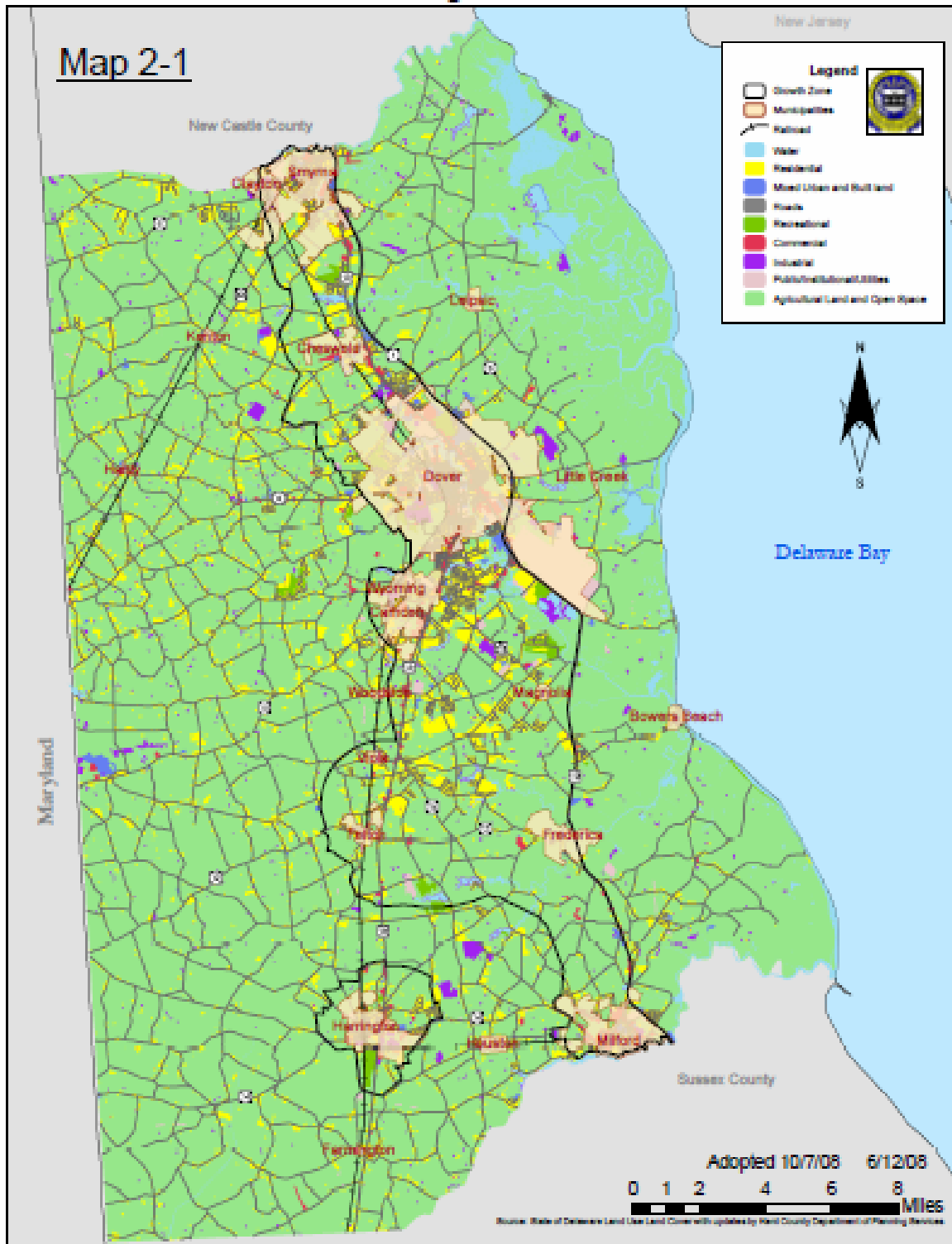
OCTOBER 7, 2008

COMPREHENSIVE PLAN

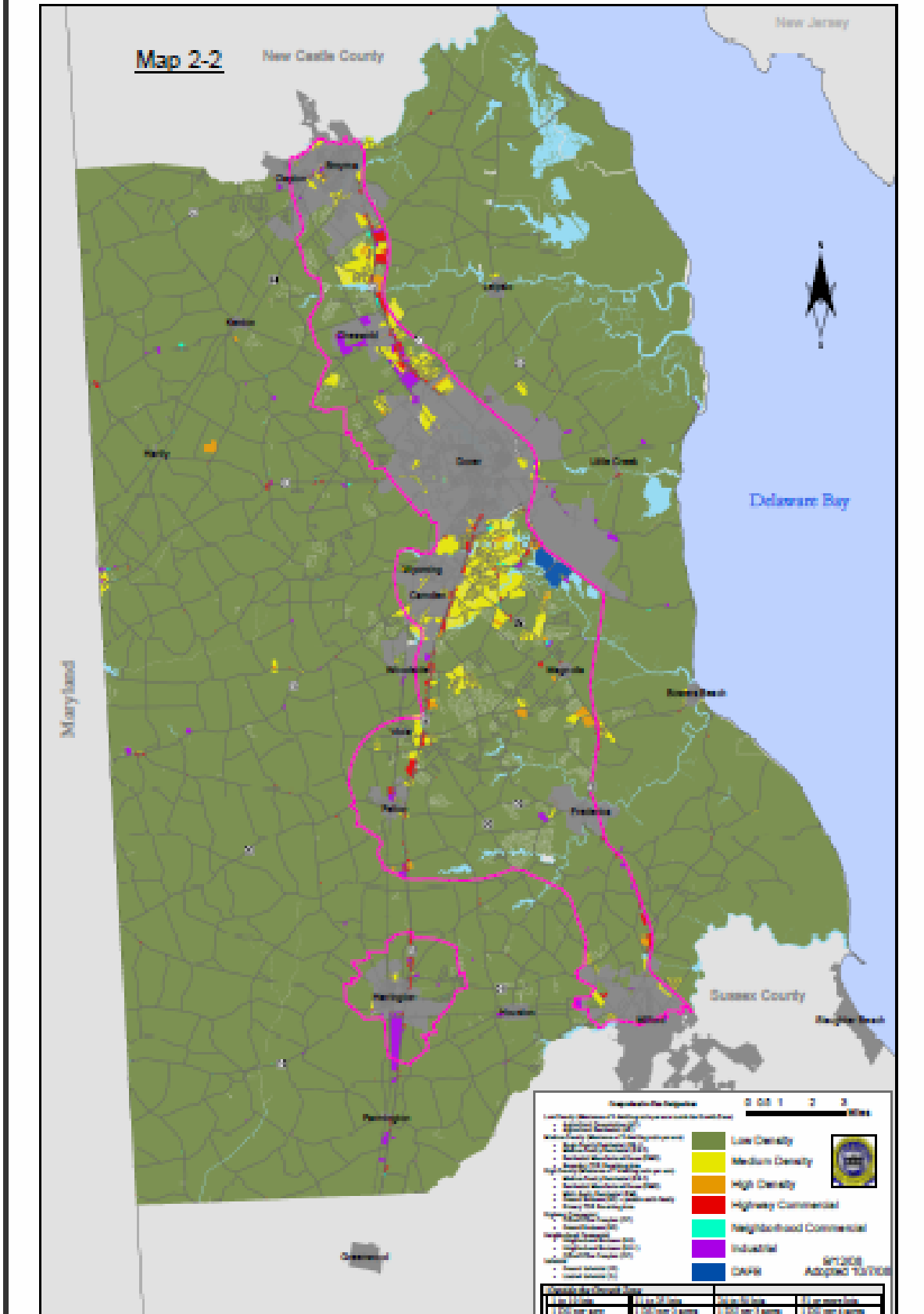


Existing Land Uses

Map 2-1



Future Land Use Map



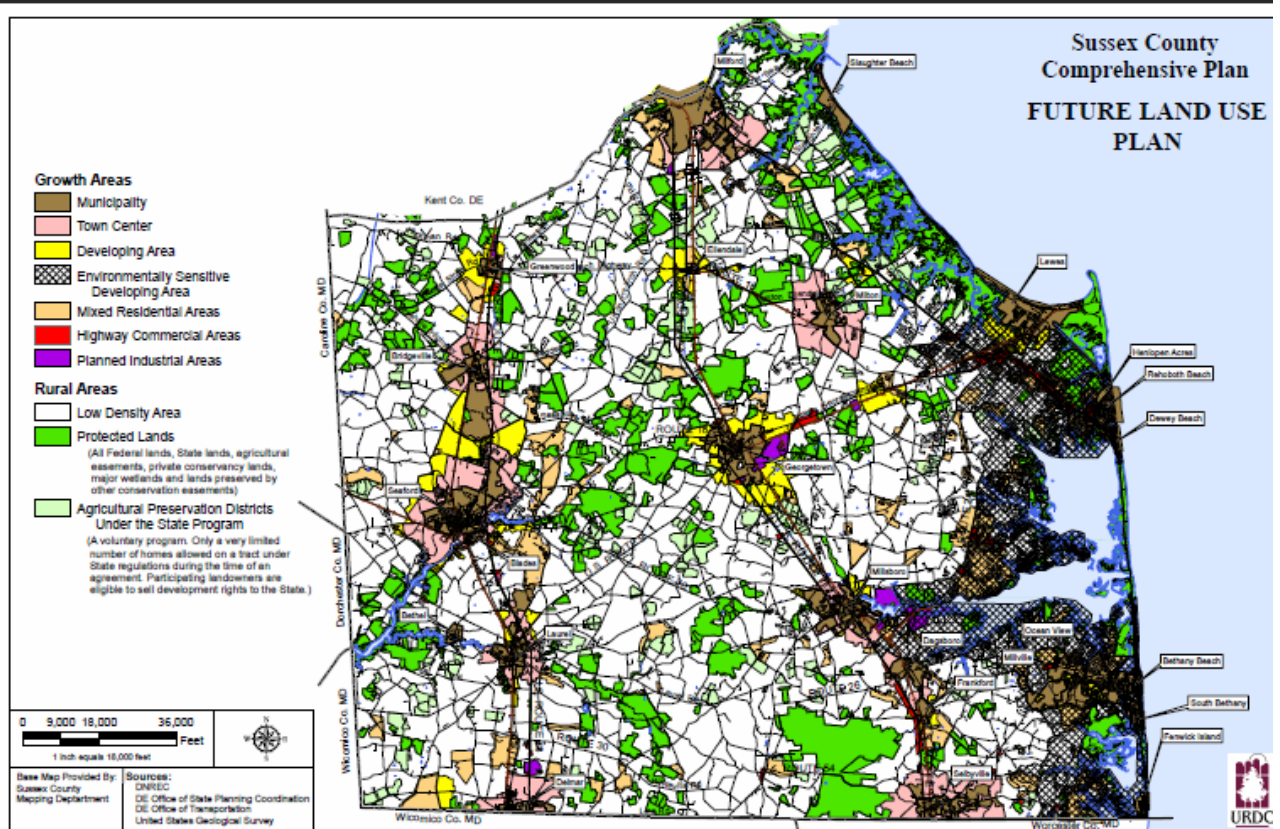
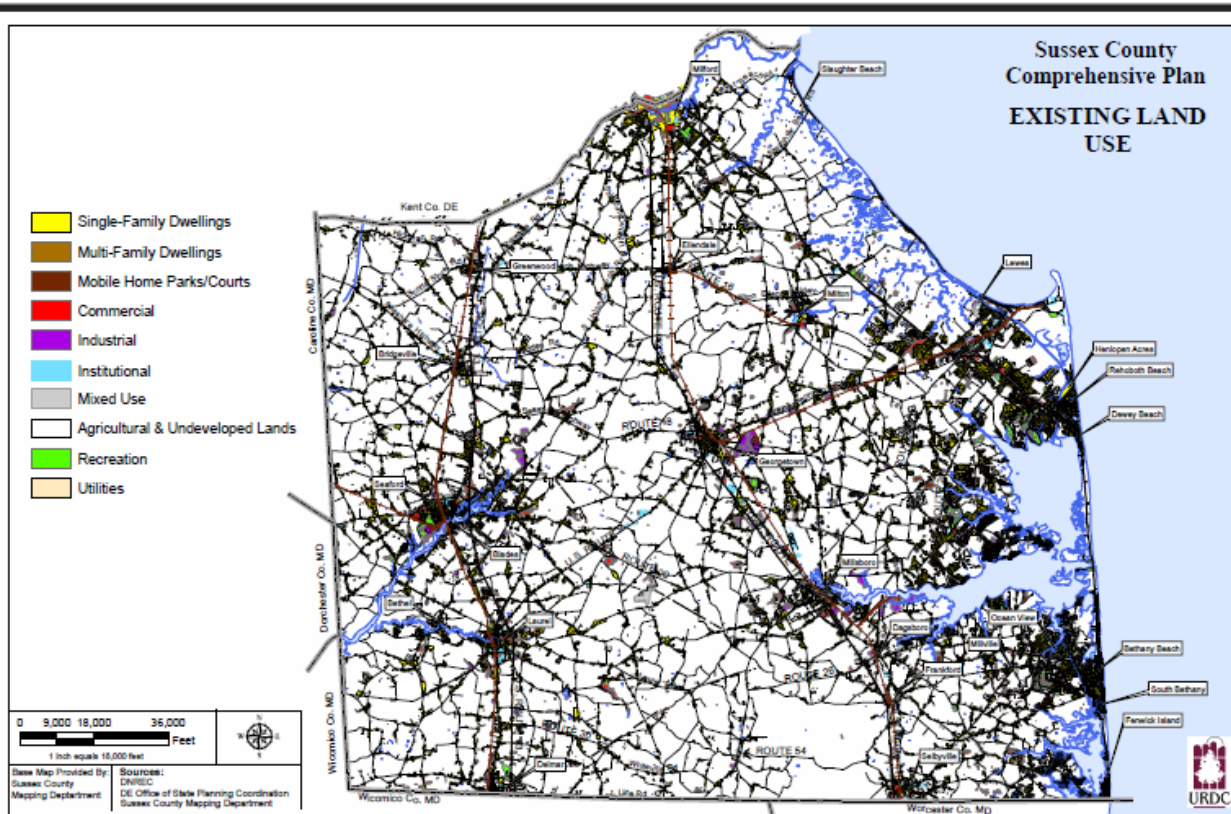
June 2008

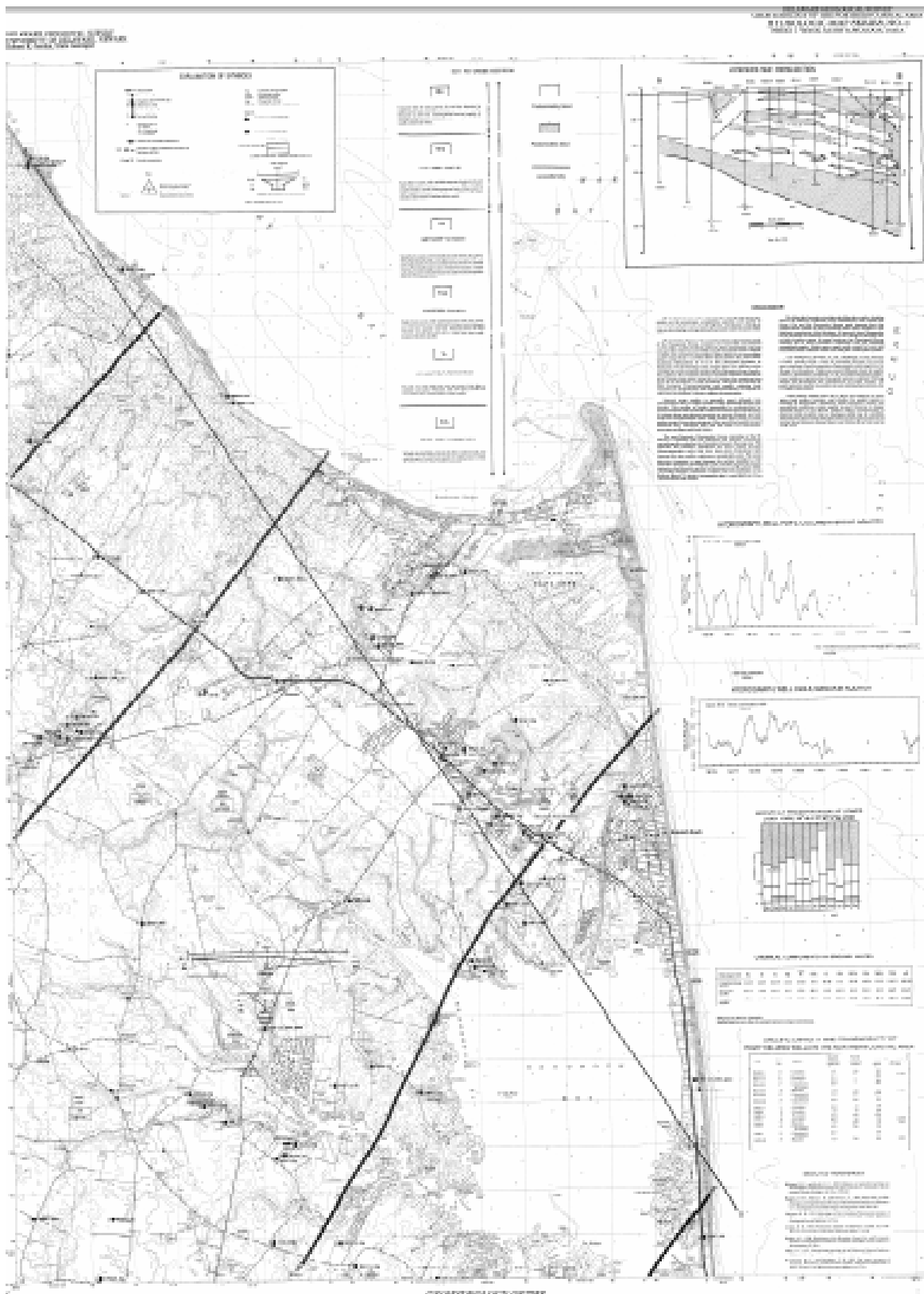
Sussex County

D e l a w a r e

Comprehensive Plan Update

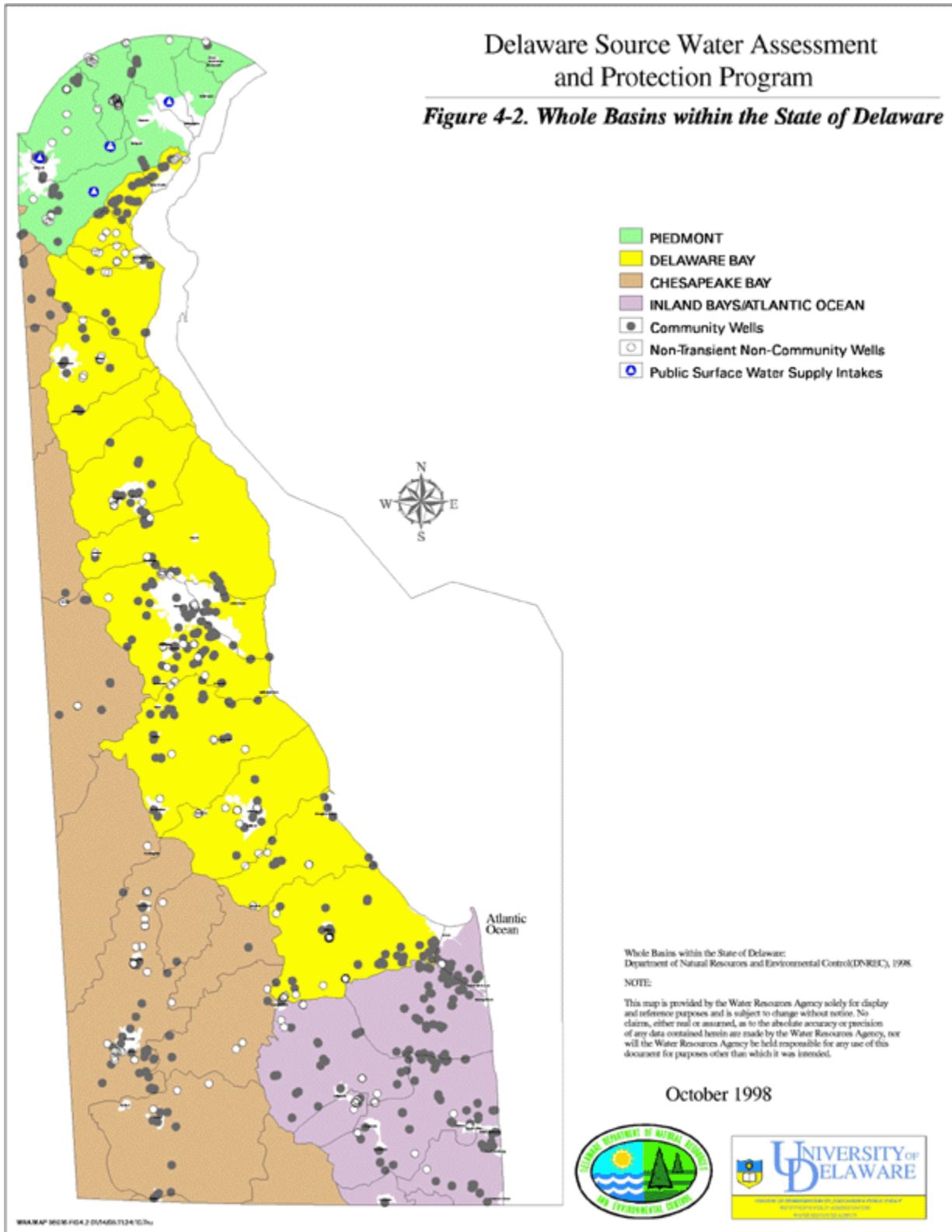


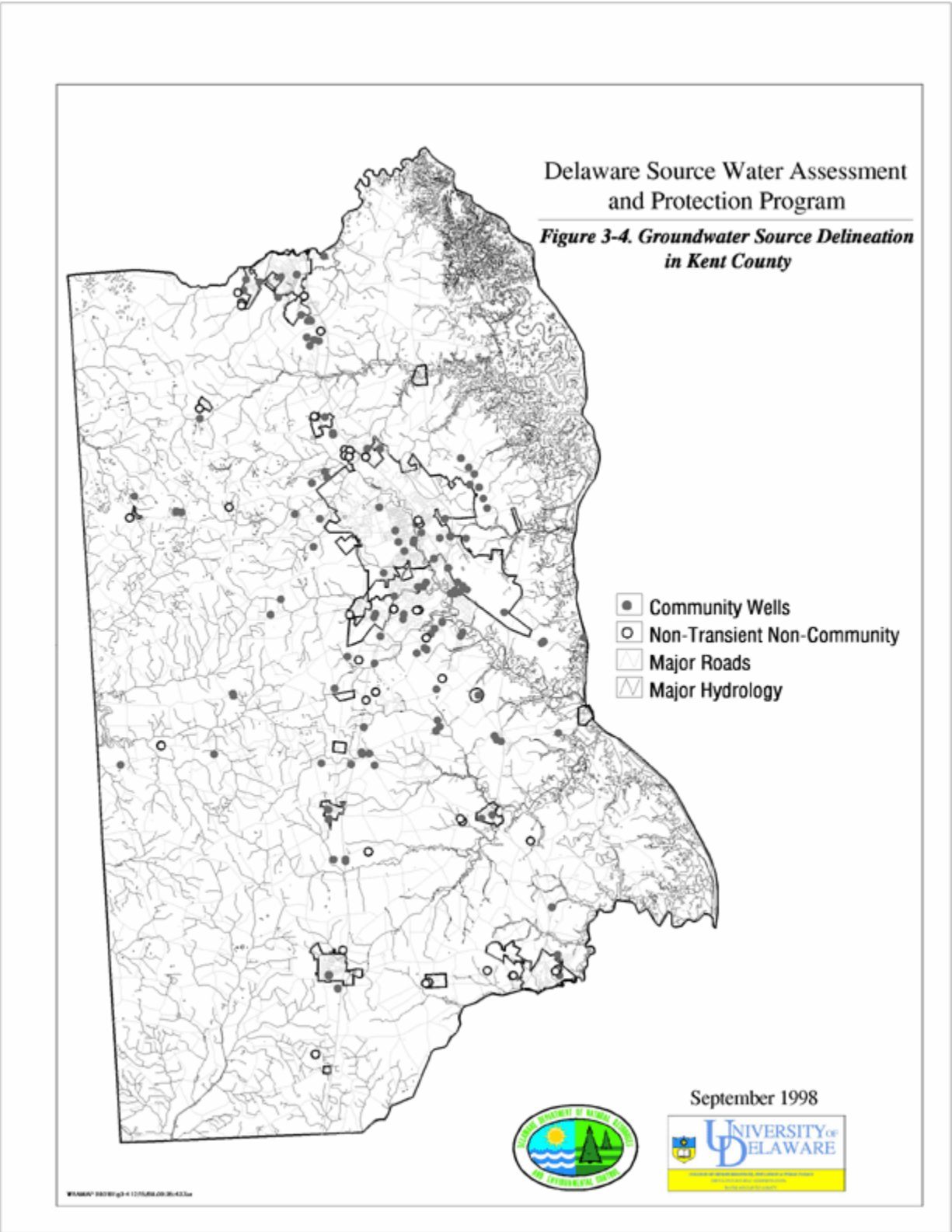




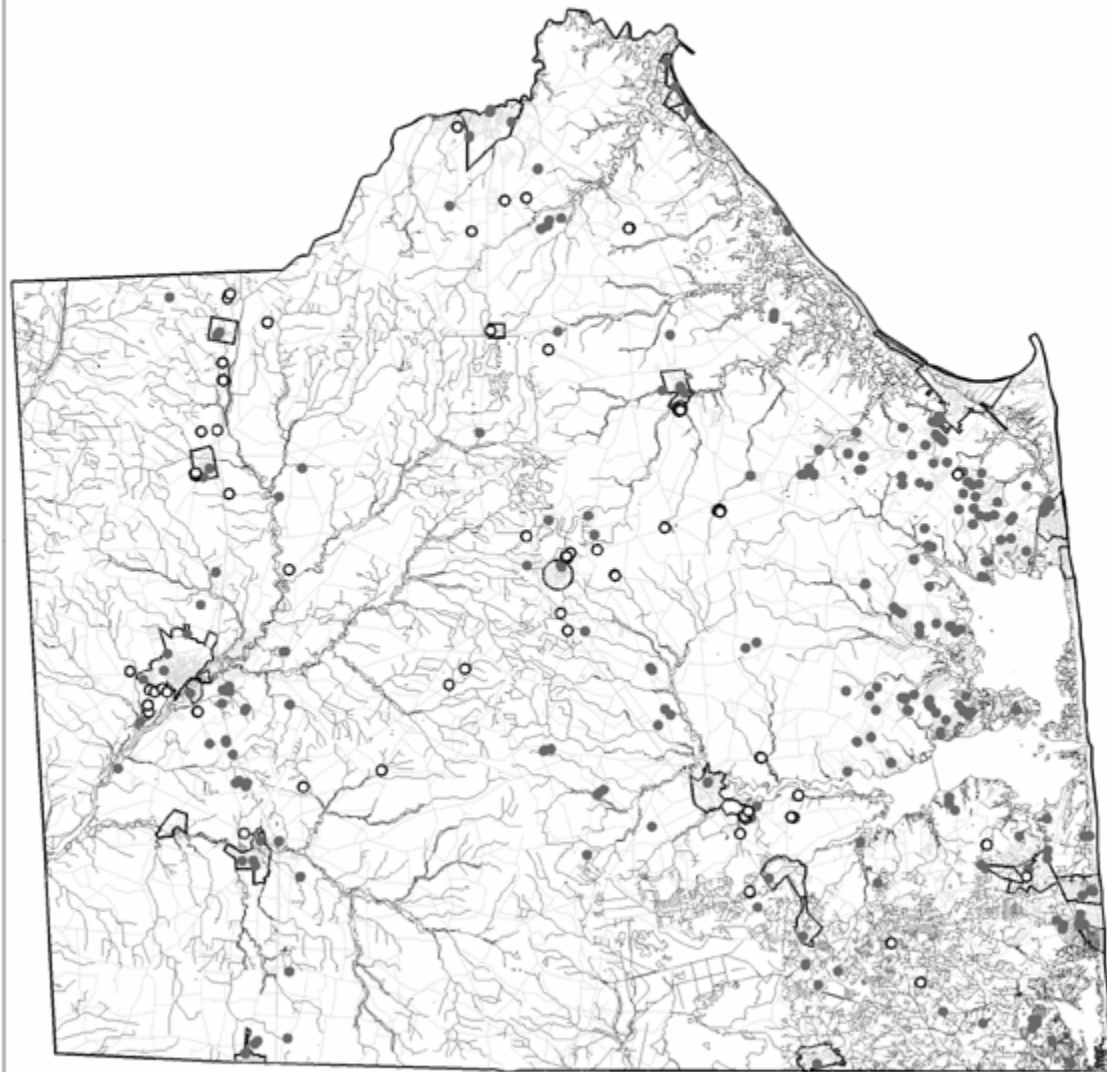
Delaware Source Water Assessment and Protection Program

Figure 4-2. Whole Basins within the State of Delaware





Delaware Source Water Assessment
and Protection Program
*Figure 3-5. Groundwater Source Delineation
in Sussex County*



- Community Wells
- Non-Transient Non-Community
- ▭ Major Roads
- ▭ Major Hydrology

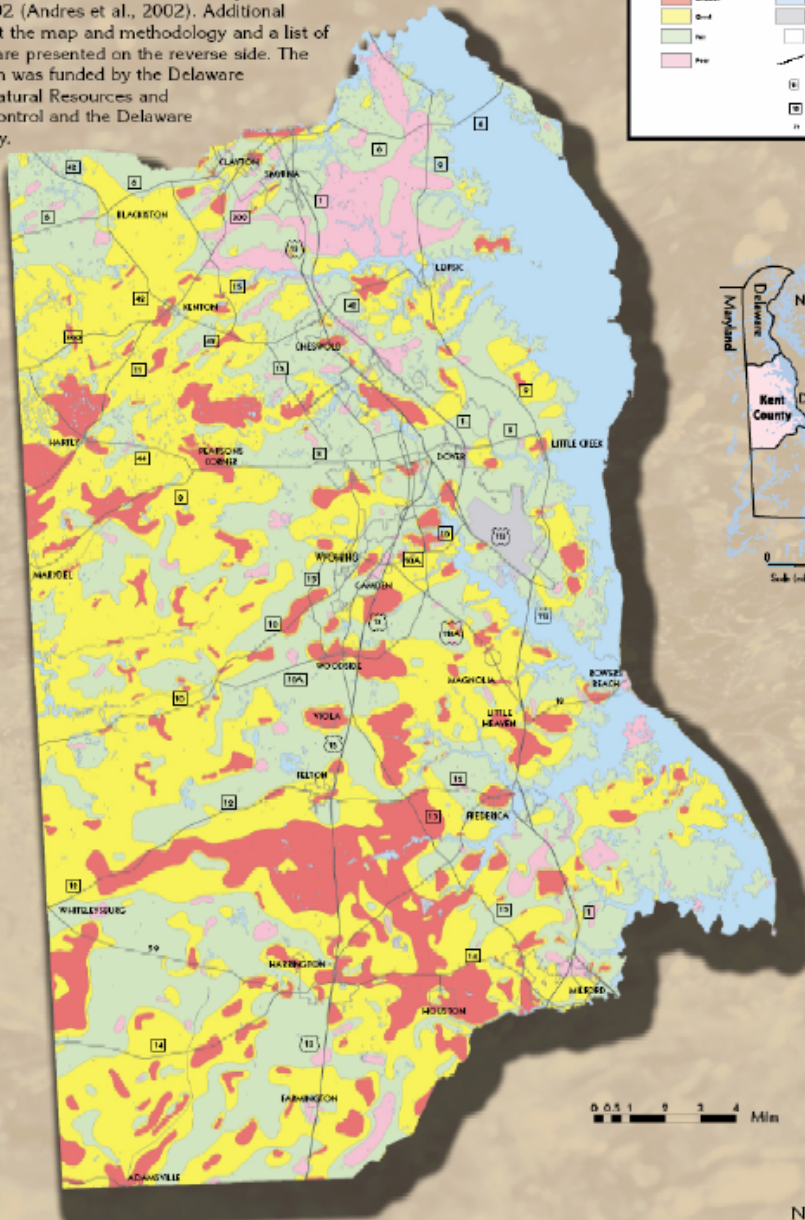


W:\MAY\2000\fig3-5 12/15/00 09:55:46.txd

GROUND-WATER RECHARGE POTENTIAL KENT COUNTY, DELAWARE

A. Scott Andres
2003

The ground-water recharge potential map of Kent County, Delaware, is a compilation of 1:24,000-scale maps of the water-transmitting properties of sediments in the interval between land surface and 20 ft below land surface. Water-transmitting properties are a key factor in determining the amount of water that recharges Delaware's aquifers and the susceptibility of aquifers used as sources of water supply to contamination from near-surface pollutant sources. The mapping methodology was developed by Andres (1991) for the geologic characteristics of the Atlantic Coastal Plain portion of Delaware. Mapping and methods development started in 1990 and the final maps were completed in 2002 (Andres et al., 2002). Additional information about the map and methodology and a list of cited references are presented on the reverse side. The mapping program was funded by the Delaware Department of Natural Resources and Environmental Control and the Delaware Geological Survey.

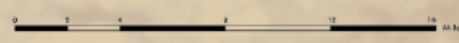
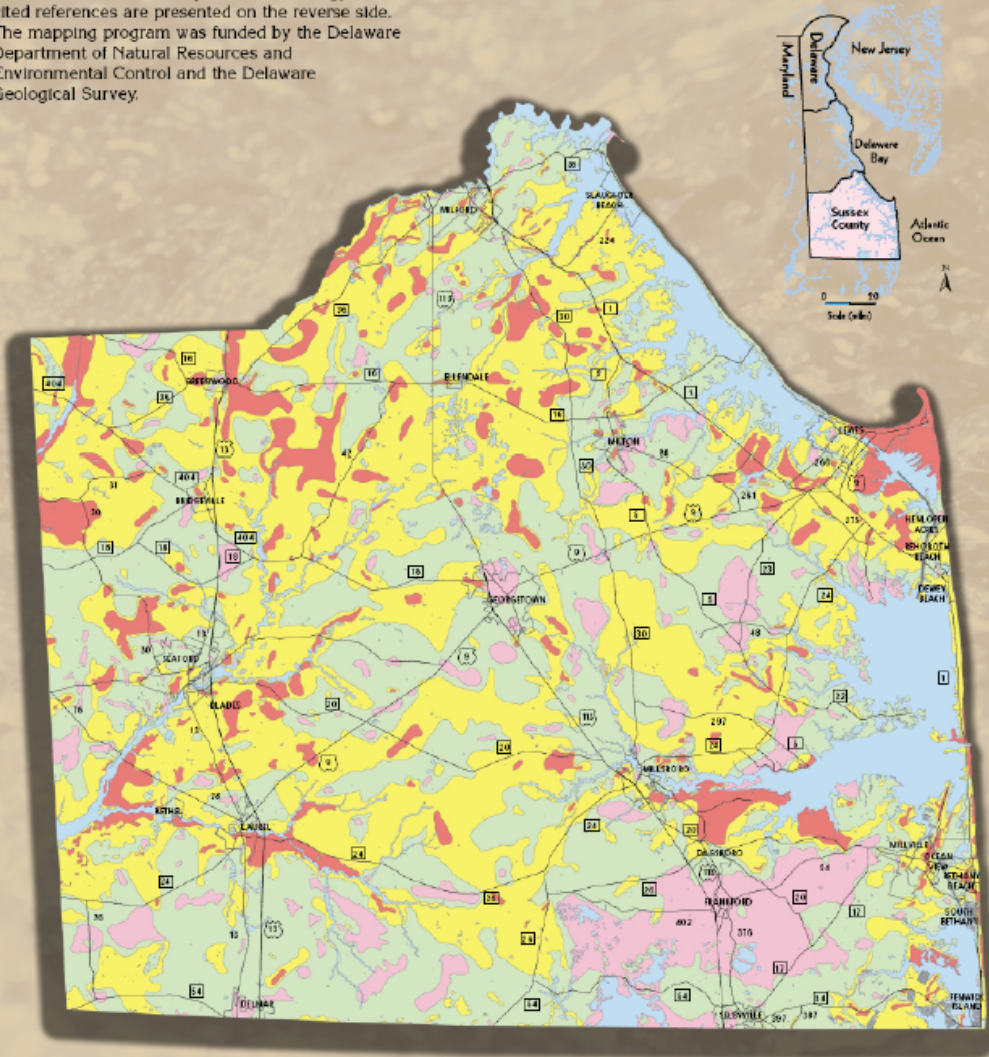


This map was developed through the application of generally accepted geologic practices and procedures, and represents the best knowledge at the time of production. It was derived through interpretation of maps, aerial photography, and other geologic data. The user must be advised that the data on which this map is based are the best available at the time of production. The scale of this map is not for general display purposes only and is not intended for use in the evaluation of water resources. For more detailed maps of more detailed scales are desired to obtain the digital data (Andres et al., 2002), or contact the Survey office for assistance. Data used in constructing this map is available at the Survey office.

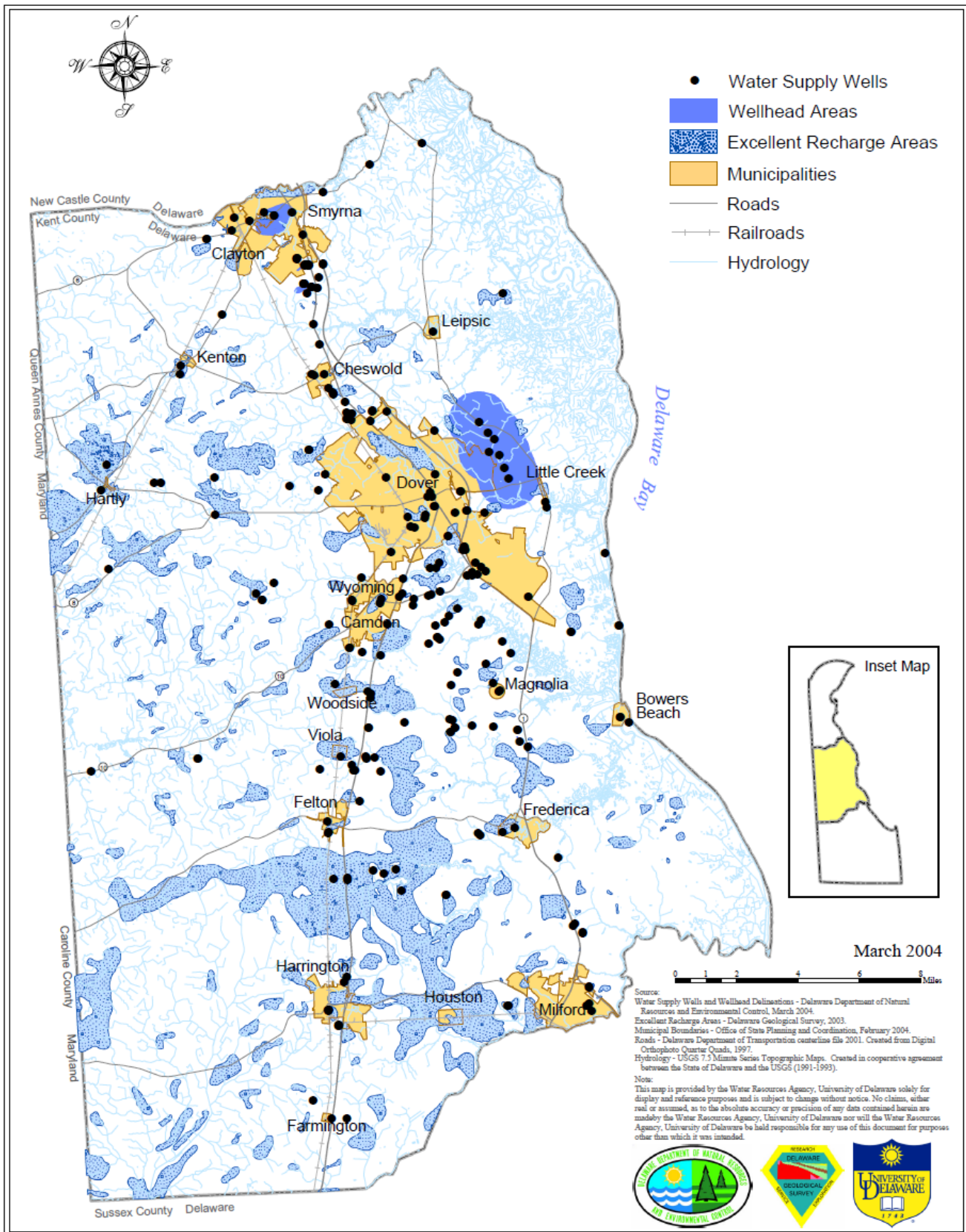
GROUND-WATER RECHARGE POTENTIAL SUSSEX COUNTY, DELAWARE

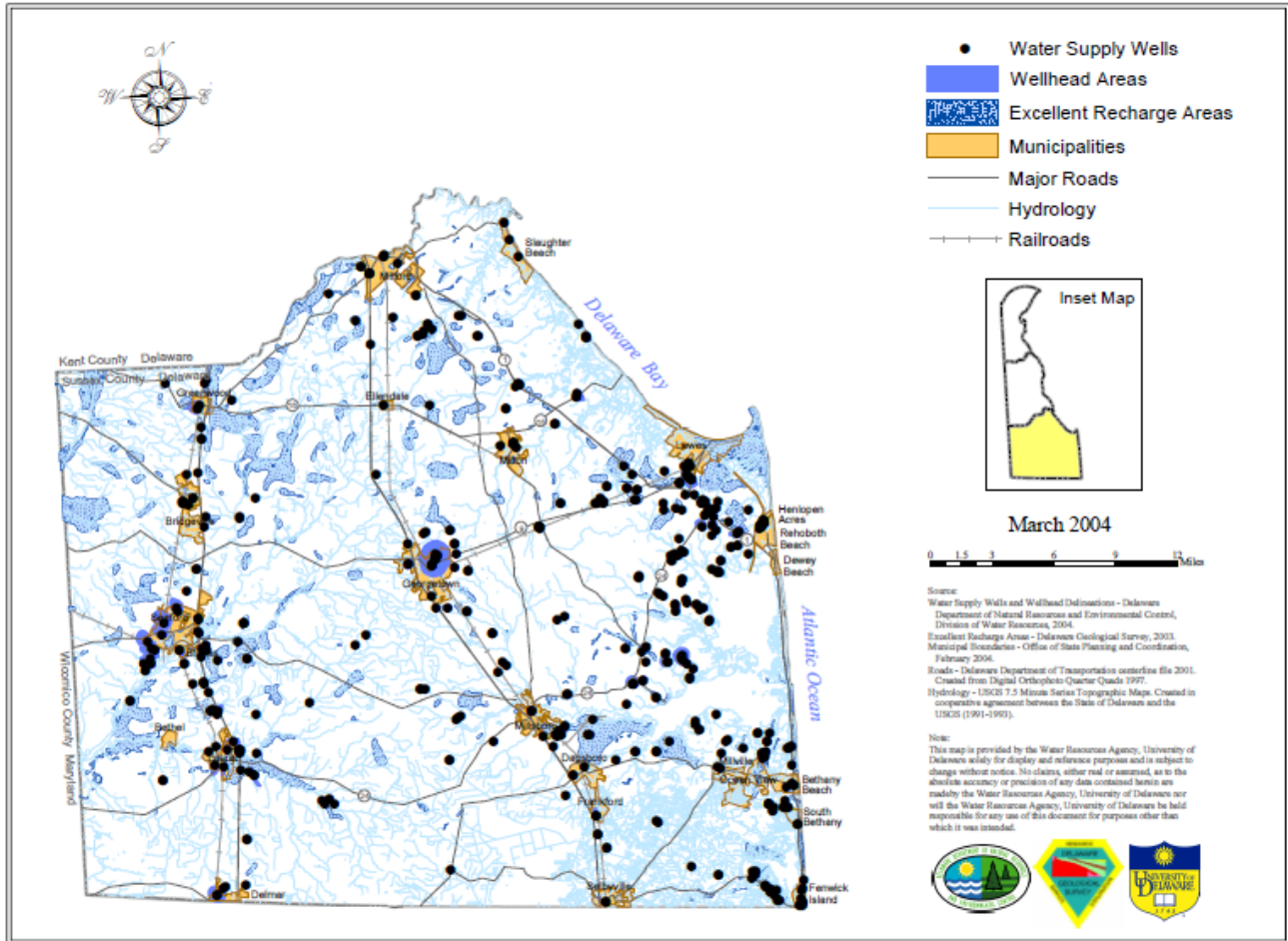
A. Scott Andres
2003

The ground-water recharge potential map of Sussex County, Delaware, is a compilation of 1:24,000-scale maps of the water-transmitting properties of sediments in the interval between land surface and 20 ft below land surface. Water-transmitting properties are a key factor in determining the amount of water that recharges Delaware's aquifers and the susceptibility of aquifers used as sources of water supply to contamination from near-surface pollutant sources. The mapping methodology was developed by Andres (1991) for the geologic characteristics of the Atlantic Coastal Plain portion of Delaware. Mapping and methods development started in 1990 and the final maps were completed in 2002 (Andres et al., 2002). Additional information about the map and methodology and a list of cited references are presented on the reverse side. The mapping program was funded by the Delaware Department of Natural Resources and Environmental Control and the Delaware Geological Survey.

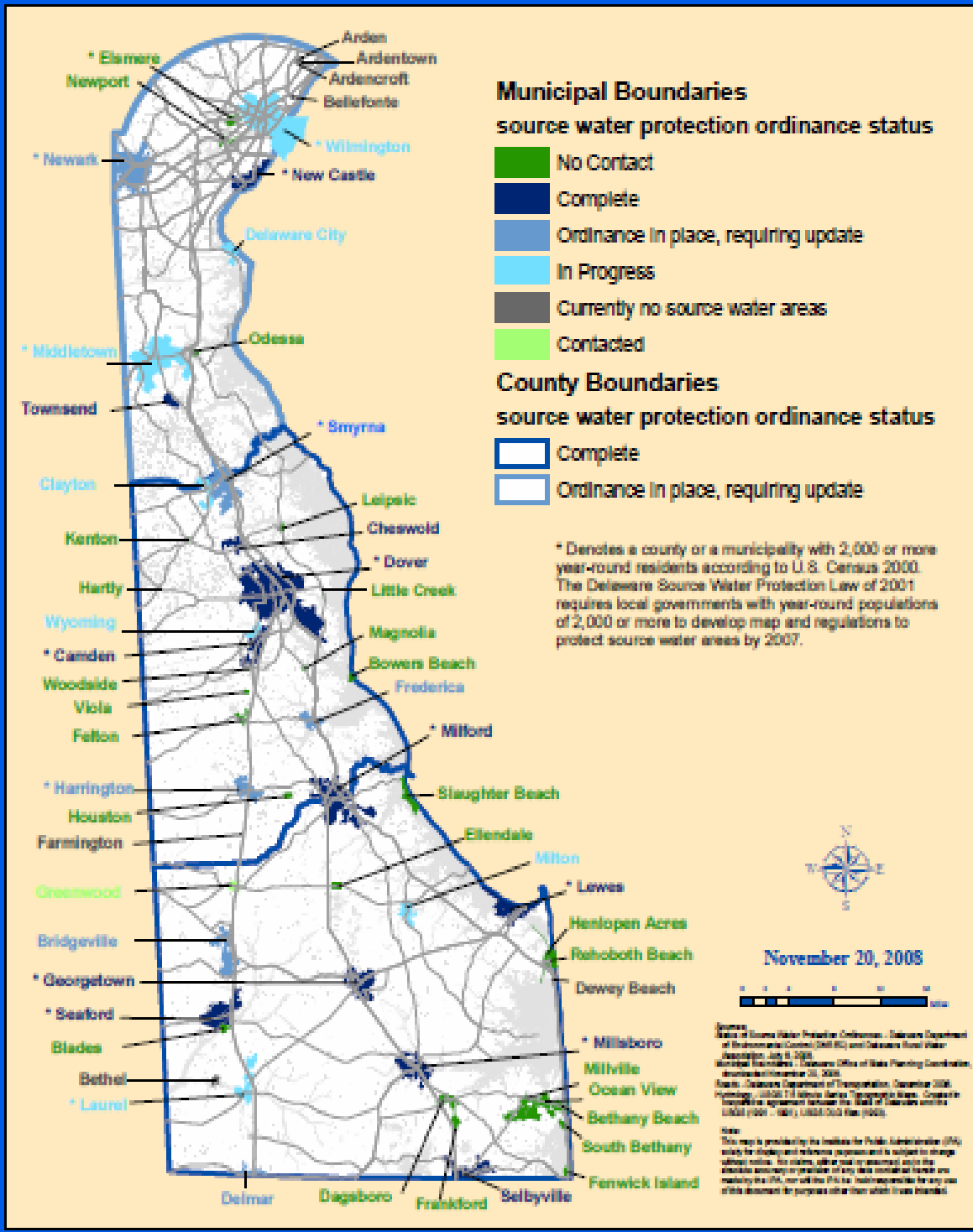


This map was developed through the application of generally accepted geologic principles and practices, and represents knowledge at the time of production. It was derived through interpretation of site-specific boring and outcrop exposure data located across the map area. Thus, the lines on the map were the considered on the basis of the context in which they were derived and the data from which they were derived. The scale of this map is for general display purposes only and is inappropriate for evaluation of recharge potential at individual sites. Persons needing more accurate detailed analysis are directed to obtain the digital data (Andres et al., 2002) or contact the Survey office for assistance. Data used in constructing this map are available at the Survey office.





Status of Source Water Protection Ordinances in Delaware



Community Water Systems	DNREC DWR Source Water Data Base
Kent County	Sussex County
Dairy Queen	Abbott's Mill
DE Museum of Natural History	Admirals Bridge
Fenwick Towers	Admirals Bridge
Fox Hunter Crossing	ALLEN'S FAMILY FOODS
Glenwood Inn	ALLEN'S HATCHERY
Iskander Islander Inn	Angola Beach
Kings Grant I	Angola by the Bay
Mancini's Rest.	Angola Crest I
Nantuckets	Angola Crest II
Pure H2O Company	ARROW SAFETY DEVICE
Rainbow Inn	Aspen Meadows
Sambo's Tavern	Avalon Park
Sands Motel	Bay Café
Sea Dunes	Bay City
Shoals, The	Bay Colony
Treasure Beach	Beach Quarters Condo
Woodside Inn	Bethany Bay
ALLEN FREAR ELEMENTARY	Bethany Beach Water
Aquatic Resources Center	Bethany Club Tennis
Baltimore Air Coil	Bethany Meadows (Foxfire Meadow)
Barnacle Bills Rest.	Big T Family Restaur
Blanton's MHP	Blades Water
Bombay Hook	Boat Hole Marina
Boon Docks Rest.	Bowerset
Bowers MHP	Briarwood
Camden District	Briarwood Manor
Camden-Wyoming	Bridgeville Commercial Park
Camden-Wyoming Moose Lodge	Bridgeville Mall
Canterbury Crossing	Bridgeville Water
Canterbury Crossing	Broadkill Beach
Capital Nursing and Rehabilitation	Burger King - Seaford
CARE A LOT	Camelot T.P.
Carlisle Village	Camp Arrowhead
CENTRAL CHRISTIAN SCHOOL	Candy Kitchen
ChesDel Rest.	Cape Windsor
Clayton Water	Captain Pete's
Colonial Tennis Club	Carey Estates
Cooper Farms	Cat Hill (Artesian)
Country Acres	Cea Dag
Countryside Estates	Cedar Creek Estates
DE ST. POLICE TROOP #3	Cedar Shore Condo's
DE State Troopers Association	Cedar Village
Delaware State Fair	Cherry Creek Valley
DELDOT (AREA #21)	CHILD CRAFT
Dover Air Force Base	Children's Place
Dover Air Force Base Housing Annex	Chit Chat's 2
Dover Air Park	Christian Tabernacle
Dover Skating Center	Clayton Theater
Dover Water	Clear Brooke Estates
Fairways Inn	Clearwater
Felton Water	Colonial East

Fisherman's Village	Colonial Estates
Flying Dutchman	Cool Branch
Forest Grove	Cottages on White Creek
Frederica Water	Country KIDS CHILD CARE
Garrison Village	Country Living
General Clothing	Country Rest Home
General's Greene	County Seat
Goose Creek Food Store	Coverdale Child Care Center
Granada T.P.	Daniels Trailer Park
Grandview T.P.	Del Agra
HANOVER FOODS	Delaware Adolescence
HARRINGTON DAY CARE	DELAWARE ELECTRIC COOP.
Harrington Moose Lodge	DELAWARE ST. POLICE TROOP #4
Harrington Water	Deldot Area #20
HARTLY ELEMENTARY	Delmar Water
Hartly T.P.	De-Lux Dairy Market
Hedgerow Hollow	Denton Mills
High Point South System	DEPT. HIGHWAYS AND TRANS.
High Point Spring Valley System	Dillard's Restaurant
High Point West System	Donovan Smith
Hillside Acres	Dove Estates
Hilltop T.P.	Dove Estates
Holly Hill Estates	DP&L
Hunter's Pointe	DRAPER KING COLE
ILC DOVER	Dutch Oven Restaurant
Imperial Shopping Center	E.I. DUPONT (SEAFORD)
Integrated Health Services	Ed's M.H.P
Iron Gate Inn	Enchanted Acres
J & J Trailer Park	Enchanted Meadows (Lazy Lagoon)
KENT CHRISTIAN ACADEMY	EPWORTH CHRISTIAN SCHOOL
KENT COUNTY MOTOR SALES	EVELYN MORRIS ELEMENTARY
KENT COUNTY WASTEWATER FACILITIES	Fenwick Center I
KENTON DAY CARE	Fenwick Island State Park
Kentwoods/Sheffield	Fenwick Islander Motel
Killens Pond	Fenwick Landing
King's Cliffe Mobile	Fenwick Light House
Kitts Hummock	Fenwick Sea Charm Motel
LAKE FOREST H.S.	Fenwick Towne Village
Lake Forest MHP	Fish Hook
Lakeland MHC	Forest Park
Law's MHP	Foxfire Meadow
Leisure Haven	Frankford Water
Lynch's T.P.	Georgetown Water
M & S Rentals	Golden Corral
Magnolia Water	Gosling Creek 1
Maime A. Warren Maturity Center	Gosling Creek 1
Maranatha Court	Gray's Trailer Park
Milford Water System	Great Scott Broadcasting
Mill's Bros. Market	Green Acres
Misty Pines	Greenwood Mennonite School
MOORE'S LAKE PLAZA	Greenwood Water
Mt. Vernon Estates	Grotto Pizza South Bethany
Nanticoke Homes	Gull Point

Oak Grove	Gull's Way Campground
Oak Grove	Gumboro General Stor
PERDUE (MILFORD)	Happy Go Lucky Trail
Pickering Beach	Henlopen Acres
Pinewood Acres	Holiday Acres
PLAYTEX	Holiday Estates
POLYTECH H.S.	Holiday Pines
PPG	Holly Lake MHP
Pure H2O Company	Holly Oak
QUALITY KITCHENS	Holly View
REICHOLD CHEMICALS	Holt's Landing State
Ridgewood Manor	Homestead Park
Rising Sun Plaza	Homestead Park
Route 8 Diner	Hunter Mill Estates
Rt 10 Plaza	Indian River Admin.
Sail Inn	Isle of Fenwick Town
Sail Loft Rest.	Jennie Wren Day Care
Sam's T.P.	Jim's Hideaway
SANDEL PACKING	KENTSUSSEX DETOX CENTER
Sandel Packing	Kings Grant System I
Seafarer Restaurant	Laurel Oasis Restaur
Shore Stop #60	Laurel Village
Smyrna Water	Laurel Water
South Bowers Improvement	Layton's Riviera
Southwood Acres	Lewes District
St. Jones Landing	Lewes Water
Strimel's T.P.	Light House Station
The Water Still	Lighthouse Trailer Park
Thomas England House	Lingo Estates
TRAPPE PACKING	LITTLE ANGELS DAY CARE
Twin Maples	Lochwood 1
U.S. COLD STORAGE	Long Neck Village
UL Harmen	Lord Baltimore Elementry School
United Parcel Service	Love Creek Park
Village Inn	Love Creek Woods
Voshell's Cove	Lynn Lee Village
WAWA #824	Mallard Lakes
Webb Acres Mini Mart	Mallard Point
Whispering Pines	Mariner's Cove
Wild Quail G & CC	Massey's Landing
WILLIS AUTO MALL	McNichol Place
Willow Tree	Meadows at Cabbage Pond
Winding Ridge	Midway Estates
Woodbury Acres	Midway Shopping Center
Woodland Manor	Milford First Baptist
Woodland T.P.	Milford Water System
Woods Edge	Millpond Acres
	Millsboro Water
	Milton Lodge
	Milton Water
	Mobile Gardens #1
	Mother Goose
	Nanticoke Homes
	Narrows

Nassau Park
New Market Village
North Bethany Seafood
O.A. Newton
Oak Orchard
Ocean Farms
Ocean Farms
Old Landing Public Golf Course
Old Mill Crab House
Peddlers Village Shops
PENCO
Pepper Ridge
PERDUE (GEORGETOWN)
PERDUE FEEDMILL
Pine Crest Terrace
Pine Haven Mobile Park
Pine Ridge
Pine Tree Campsites
Pit,The
Pleasant Acres(Peaceful Acres)
Point Farm
Pot Nets
Primehook Beach
Pyle Center
PYLE CENTER
Red Mill Motel
Rehoboth Bay
Rehoboth District
Rehoboth Shores
Rehoboth Water
Roxford
Sand Hill Acres
Sand Hill T.P
Savannah Place
Scottsdale
Sea Colony
Seafarer Village 1
Seaford Ice & Cold Storage
Seaford Swimming Pool Assoc.
Seaford Water
Selbyville Water
Shady Acres
Shady Nook
Shady Park
Shockley Town
Silver View Farms
Slaughter Beach
Slaughter Neck Community Action
Smith Landing
Stage Village
Stockley Center
Suburban Propane
Summer Time Trailer
Sunshine Plaza

	Sussex County Airport
	Sussex County Industrial Airpark
	Sussex East
	Sussex Manor
	Sussex Shores
	Sussex Vocational Tech. Center
	Swann Estates
	Swann Keys
	Sweet Briar
	Tall Pines
	Teal Point
	The Glade
	The Orchard
	Thomas Horseshoe
	Timber Acres
	Todd's MHP
	TOWNSENDS
	Trap Pond State Park
	Treasure Beach
	Twin Cedar
	University of DE (Georgetown)
	Up Country MHP
	Village of Fenwick
	Village Square Child Care
	Vines Creek
	VLASIC
	Walker's Mill
	Warren's Station Rest.
	Waterside
	Wee Wisdom
	West Bay
	White Oak
	Woodlands at Millsboro
	Woods on Herring Creek
	York Beach Mall c/o