

# The Delaware Estuary

---

“The Economic Engine of the Delaware Valley”



# What do these enterprises have in common?

- *Boeing*
- *Sunoco*
- *Campbell's Soup*
- *DuPont*
- *Wawa*
- *Astra Zeneca*
- *Starbucks*
- *Iron Hill Brewery*
- *Philadelphia Eagles*
- *Salem Nuclear Power Plant*
- *United States Navy*

They all depend on the Delaware Estuary!

**Table 1.** Jobs and salaries created by watershed restoration work  
(Great Lakes Coalition (2010) from U. S. Bureau of Labor Statistics)

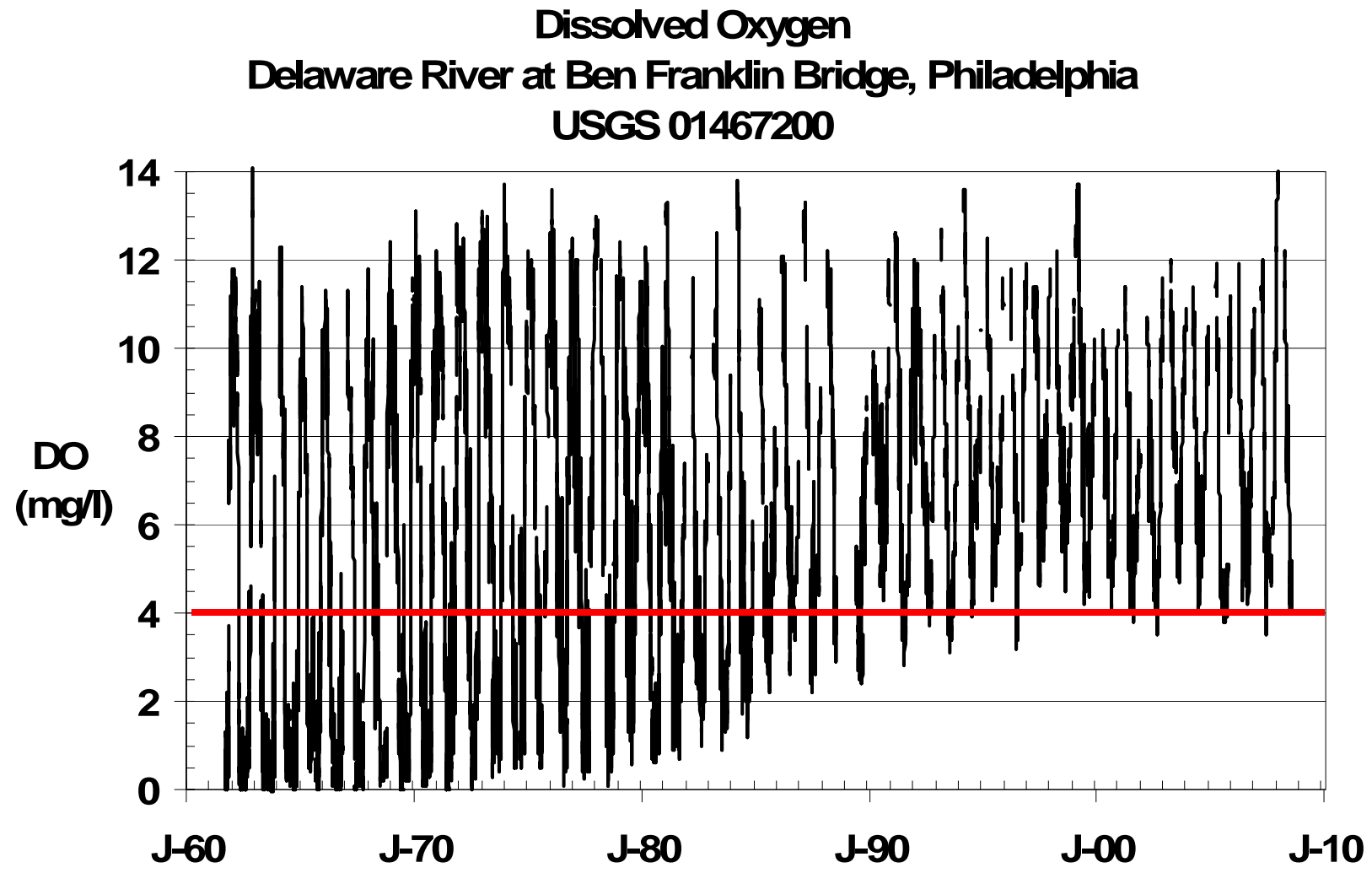
<b>Job</b>	<b>Mean Salary</b>	<b>Job</b>	<b>Mean Salary</b>
Wetland scientist	\$45,730	Fisheries Biologist	\$60,670
Research scientist	\$45,730	Archeologist	\$57,230
Construction manager	\$93,290	Operating Engineer	\$44,180
Biologist	\$69,430	Environmental Engineer	\$80,750
Toxicologist	\$70,000	Hydrogeologist	\$92,710
Chemist	\$72,740	Environmental Planner	\$64,680
Geologist	\$58,000	Plumber/Pipefitter	\$69,870
Helicopter Pilot	\$90,000	Carpenter	\$43,640
Information Technology	\$70,930	Electrician	\$50,850
Admin. Staff	\$32,990	Truck Driver	\$39,260
Mechanics	\$37,000	Concrete Workers	\$39,410
Excavator	\$38,540	Dredge Operator	\$38,330
Landscape Architect	\$65,910	Conservation Scientist	\$61,180
Civil Engineer	\$81,180	Biological technician	\$41,140
General Laborer	\$33,190	Pile Drive Operator	\$51,410



1961: JFK signs DRBC Compact

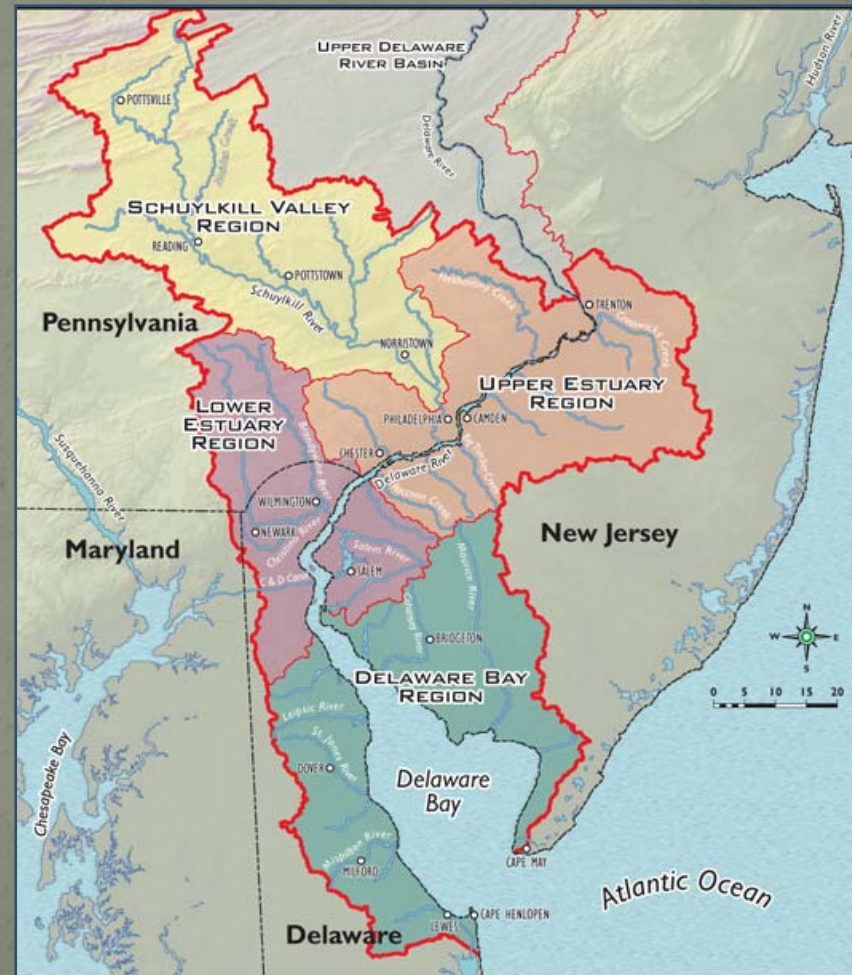
1996: Congress adds Del. Estuary to National Estuary Program

2011: Delaware River revival underway



# The Delaware Estuary

- 6,000 square miles, 6.7 million people
- In Delaware, 50% of land area, 72% of people
- In New Jersey, 26% of land area, 19% of people
- In Pennsylvania, 7% of land area, 35% of people





# \$10 Billion in Economic Activity

- Navigation & Port Activity – over \$2.6 billion
- Agriculture – over \$2.5 billion
- Water Supply – over \$1.8 billion
- Fish & Wildlife – over \$845 million



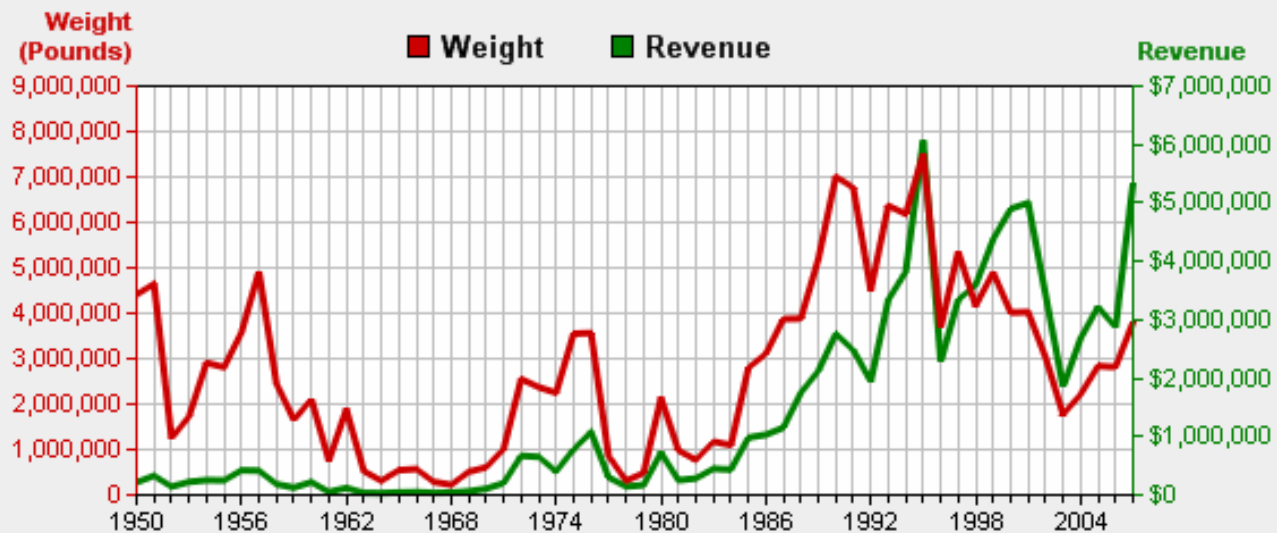


## ... Plus Additional Economic Value

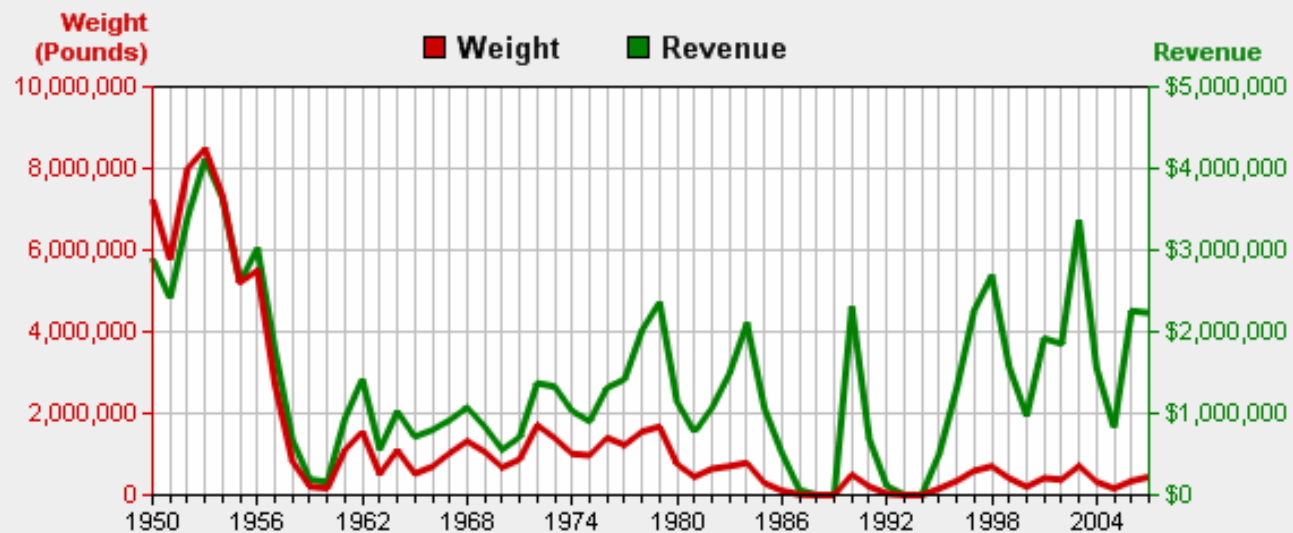
- Increased Property Value - \$256 million
- Water/Wastewater Treatment Value – over \$1.5 billion
- Value of Parks – over \$1 billion



### Delaware 'crab, blue' Harvests

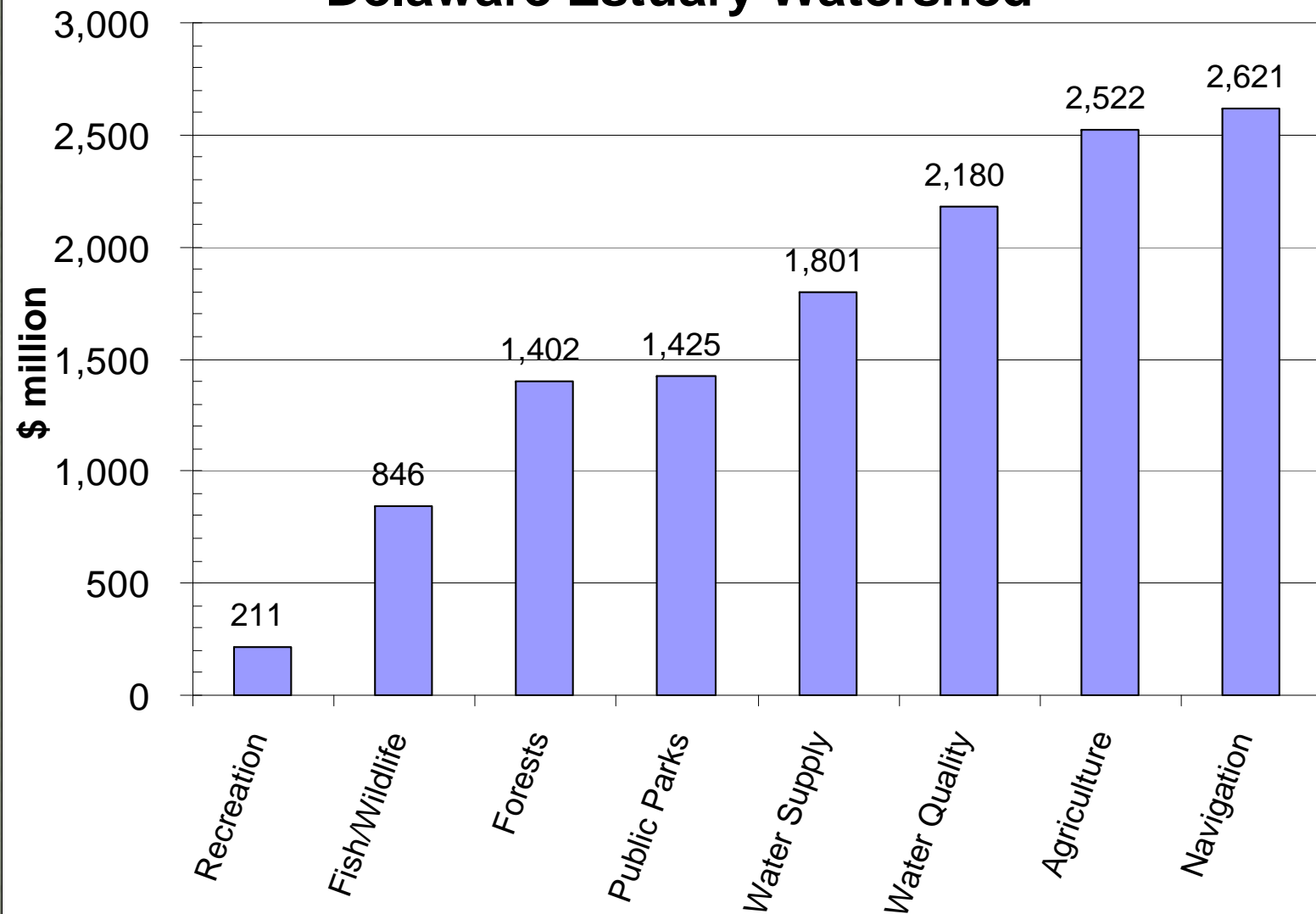


### New Jersey 'oyster, eastern' Harvests



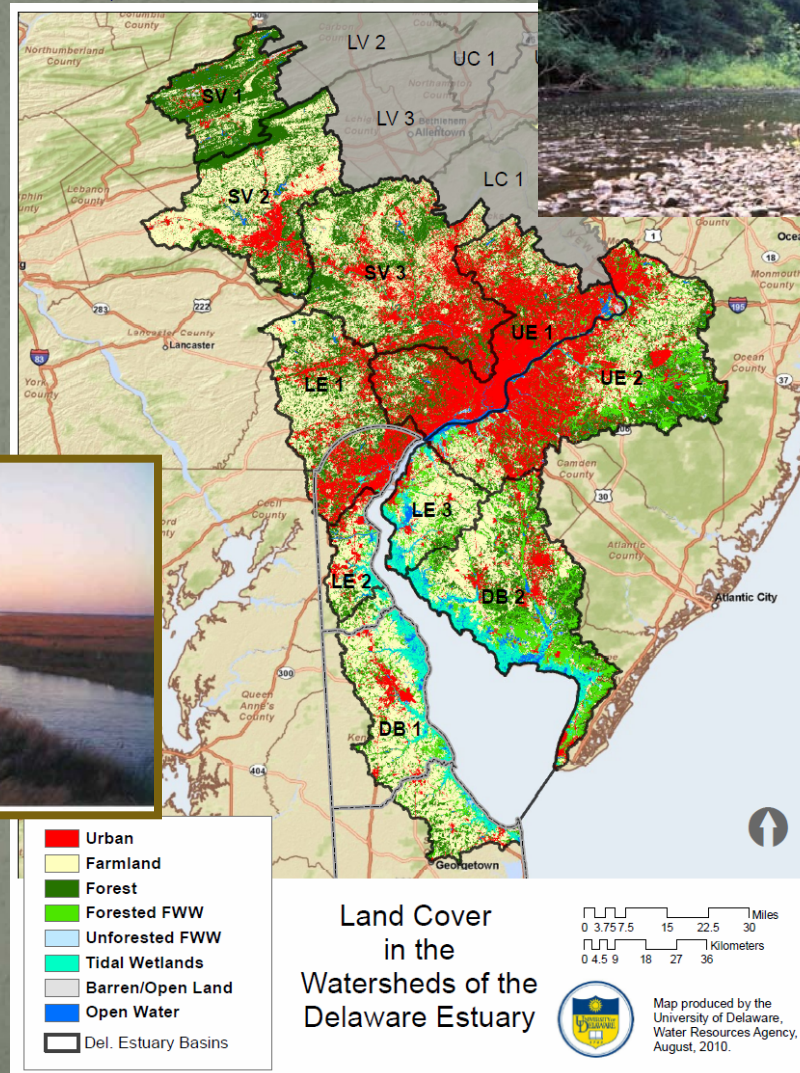


## Annual Economic Value Delaware Estuary Watershed



# \$12.1 Billion of Ecosystem Good & Services (per year)

- Wetlands - \$4.3 billion
- Farms - \$3.6 billion
- Forests – \$2.3 billion





# >500,000 jobs (\$10 billion in wages)

- Marine & Water-related Construction
- Fishing & Aquaculture
- Ship/Boat Building
- Tourism/Recreation
- Marine Transportation
- Hunting/Fishing/Wildlife Recreation-related
- Farming
- Water/Wastewater Utility
- Ports
- Watershed Protection/Management



The Delaware Estuary watershed in Del., NJ, and Pa. provides:

1. Over **\$10 billion** in annual economic value from recreation, water quality, water supply, ecotourism, forest, agriculture, open space, and port benefits.
2. Ecosystem goods and services worth **\$12 billion** per year, net present value (NPV) = **\$392 billion**.
3. Over **500,000 jobs** with **\$10 billion** in wages