


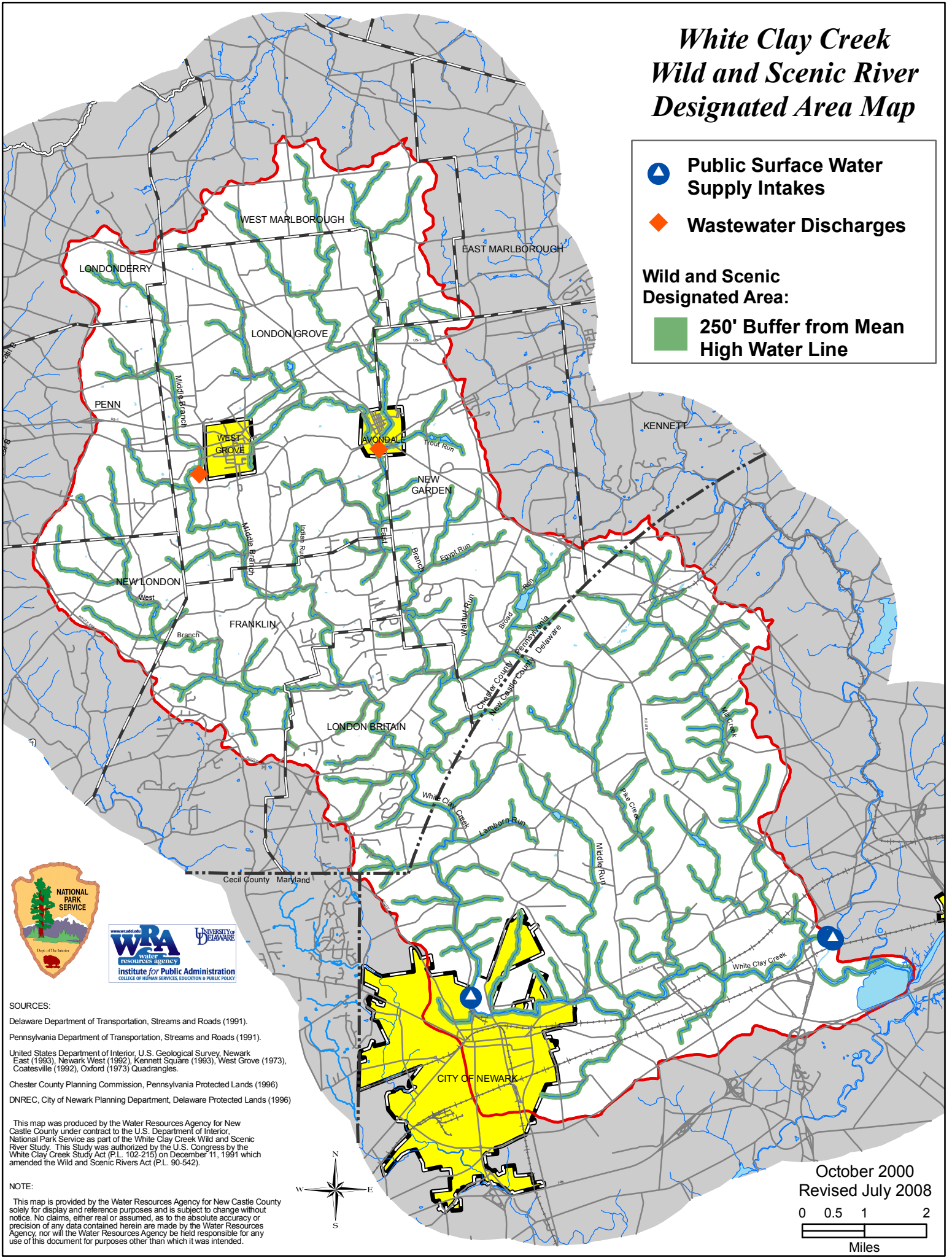


White Clay Creek Wild and Scenic River Designated Area Map

 **Public Surface Water Supply Intakes**
 **Wastewater Discharges**
Wild and Scenic Designated Area:
 **250' Buffer from Mean High Water Line**



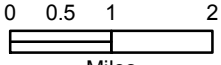
SOURCES:
 Delaware Department of Transportation, Streams and Roads (1991).
 Pennsylvania Department of Transportation, Streams and Roads (1991).
 United States Department of Interior, U.S. Geological Survey, Newark East (1993), Newark West (1992), Kennett Square (1993), West Grove (1973), Coatesville (1992), Oxford (1973) Quadrangles.
 Chester County Planning Commission, Pennsylvania Protected Lands (1996)
 DNREC, City of Newark Planning Department, Delaware Protected Lands (1996)

This map was produced by the Water Resources Agency for New Castle County under contract to the U.S. Department of Interior, National Park Service as part of the White Clay Creek Wild and Scenic River Study. This Study was authorized by the U.S. Congress by the White Clay Creek Study Act (P.L. 102-215) on December 11, 1991 which amended the Wild and Scenic Rivers Act (P.L. 90-542).

NOTE:
 This map is provided by the Water Resources Agency for New Castle County solely for display and reference purposes and is subject to change without notice. No claims, either real or assumed, as to the absolute accuracy or precision of any data contained herein are made by the Water Resources Agency, nor will the Water Resources Agency be held responsible for any use of this document for purposes other than which it was intended.



October 2000
 Revised July 2008



Miles