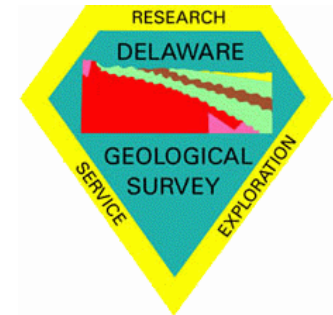


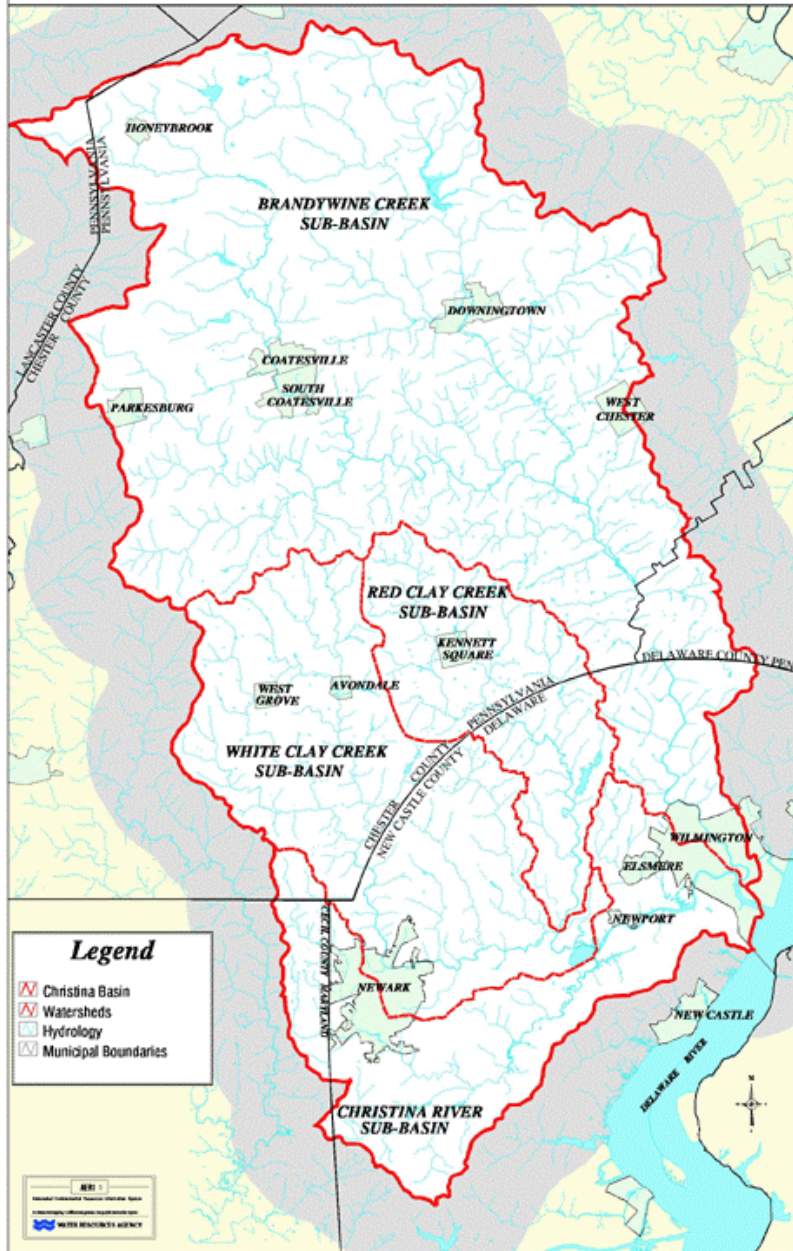
Governor's Drought Advisory Committee

2 August 2002



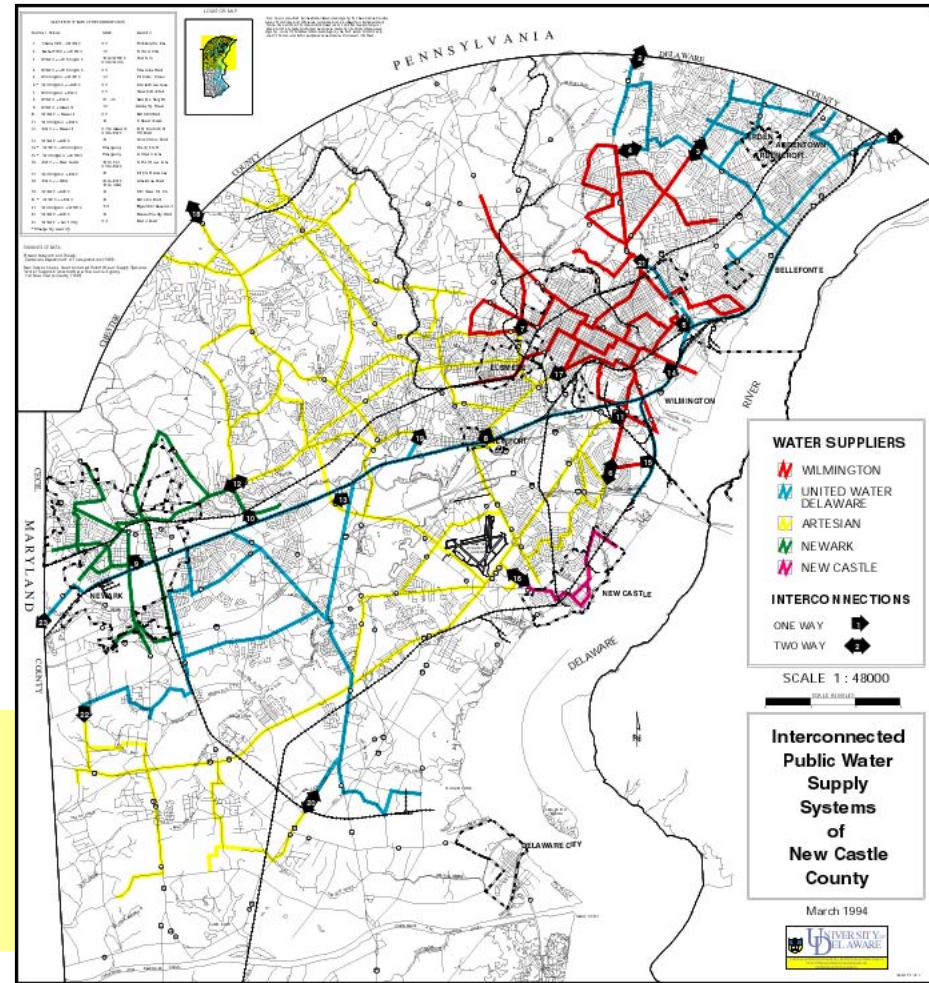
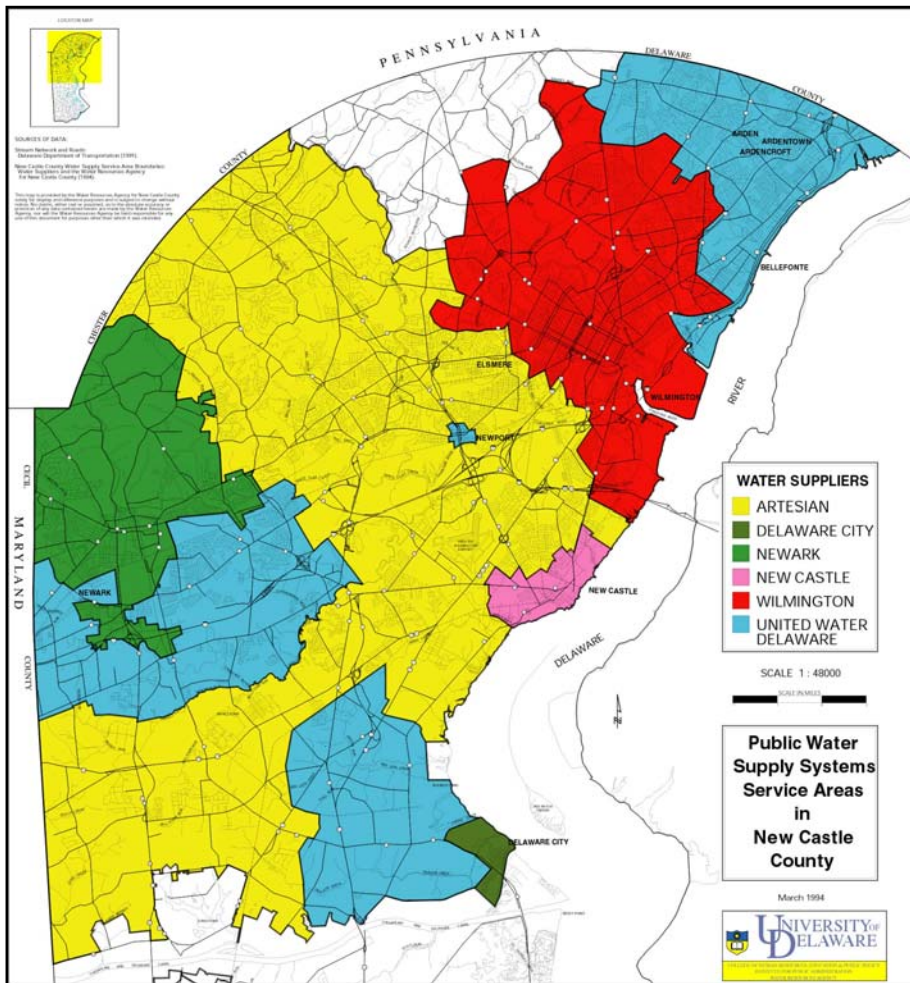
Christina Basin Water Quality Management Strategy

Base Map



Christina Basin

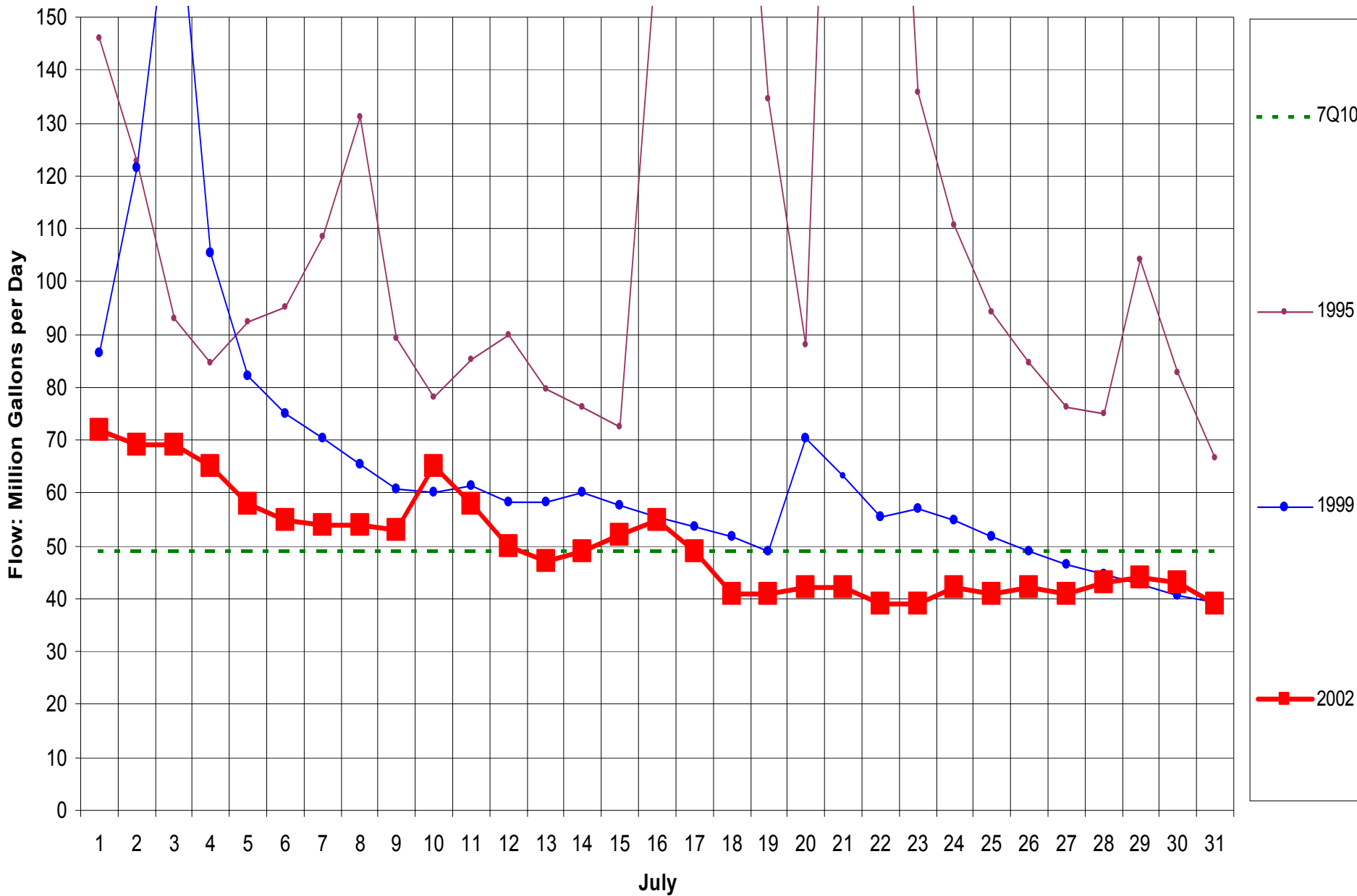
New Castle County Public Water Supply System Service Areas



New Castle County Public Water Supply System Interconnections

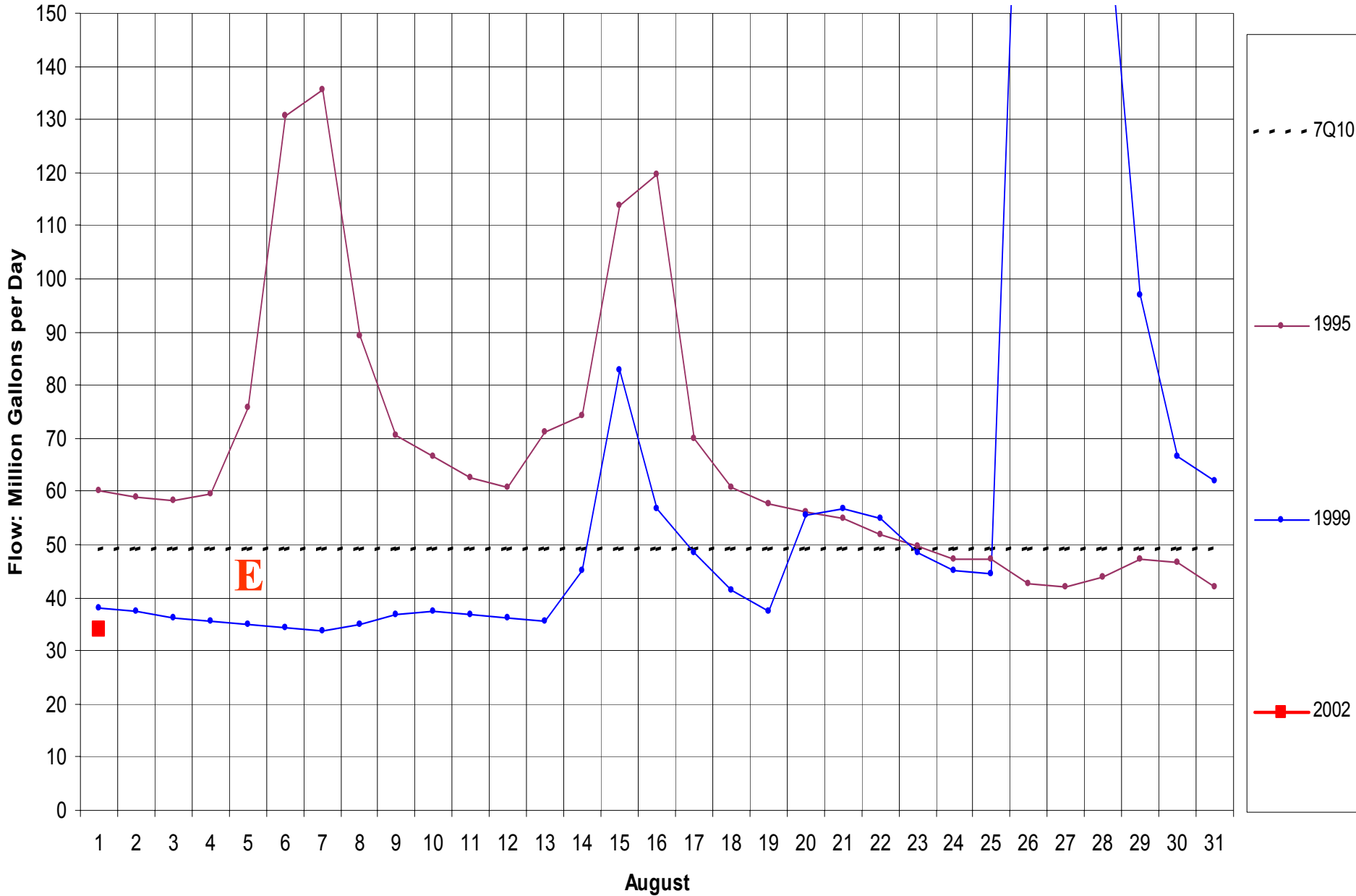
Brandywine Creek Streamflow Data, July 2002

*The 7Q10 is the minimum flow necessary to protect fishery and habitat that is likely to occur for 7 consecutive days, once every 10 years



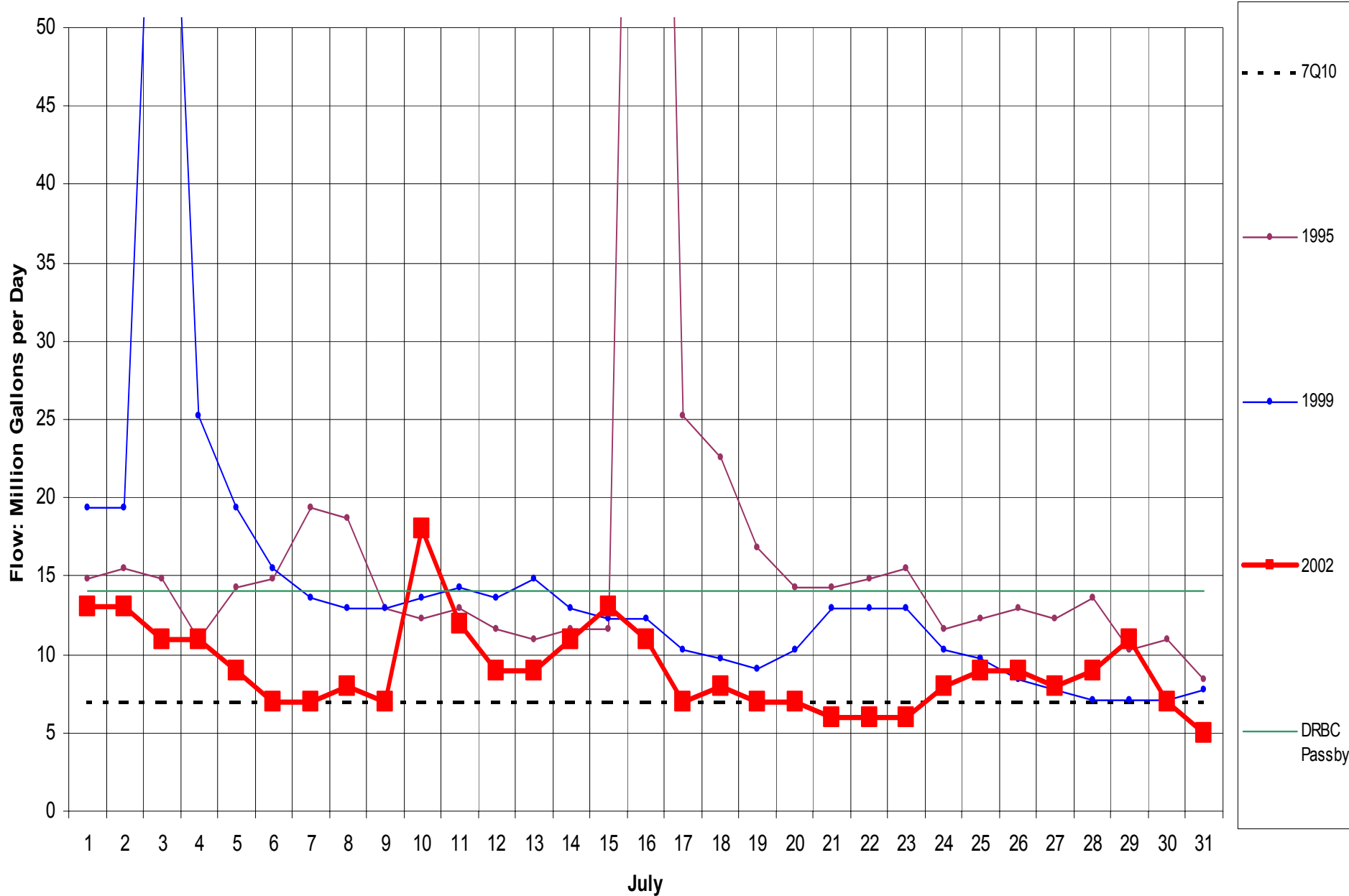
Brandywine Creek Streamflow Data, August 2002

*The 7Q10 is the minimum flow necessary to protect fishery and habitat that is likely to occur for 7 consecutive days, once every 10 years



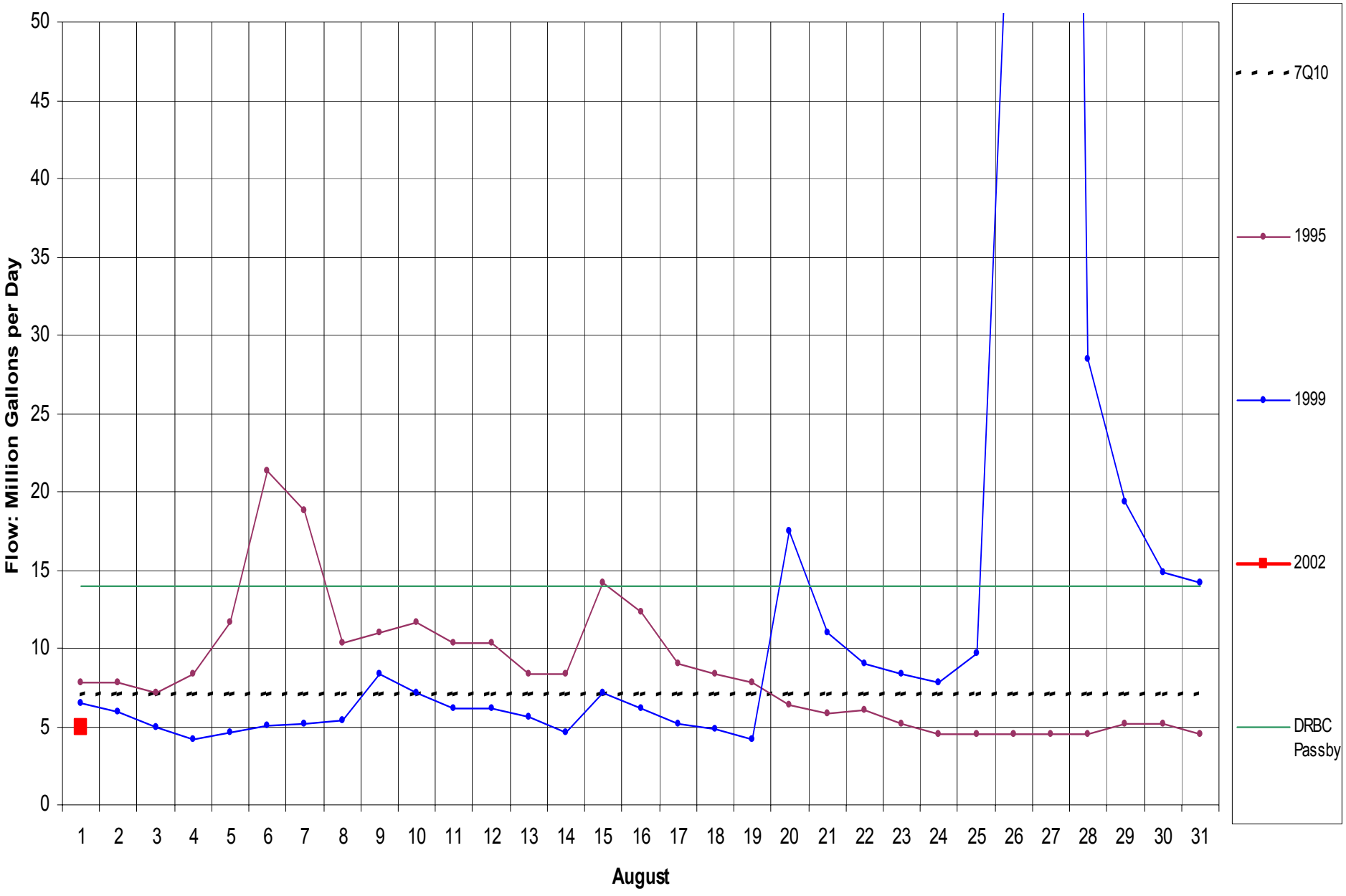
White Clay Creek at Newark Streamflow Data, July 2002

*The 7Q10 is the minimum flow necessary to protect fishery and habitat that is likely to occur for 7 consecutive days, once every 10 years



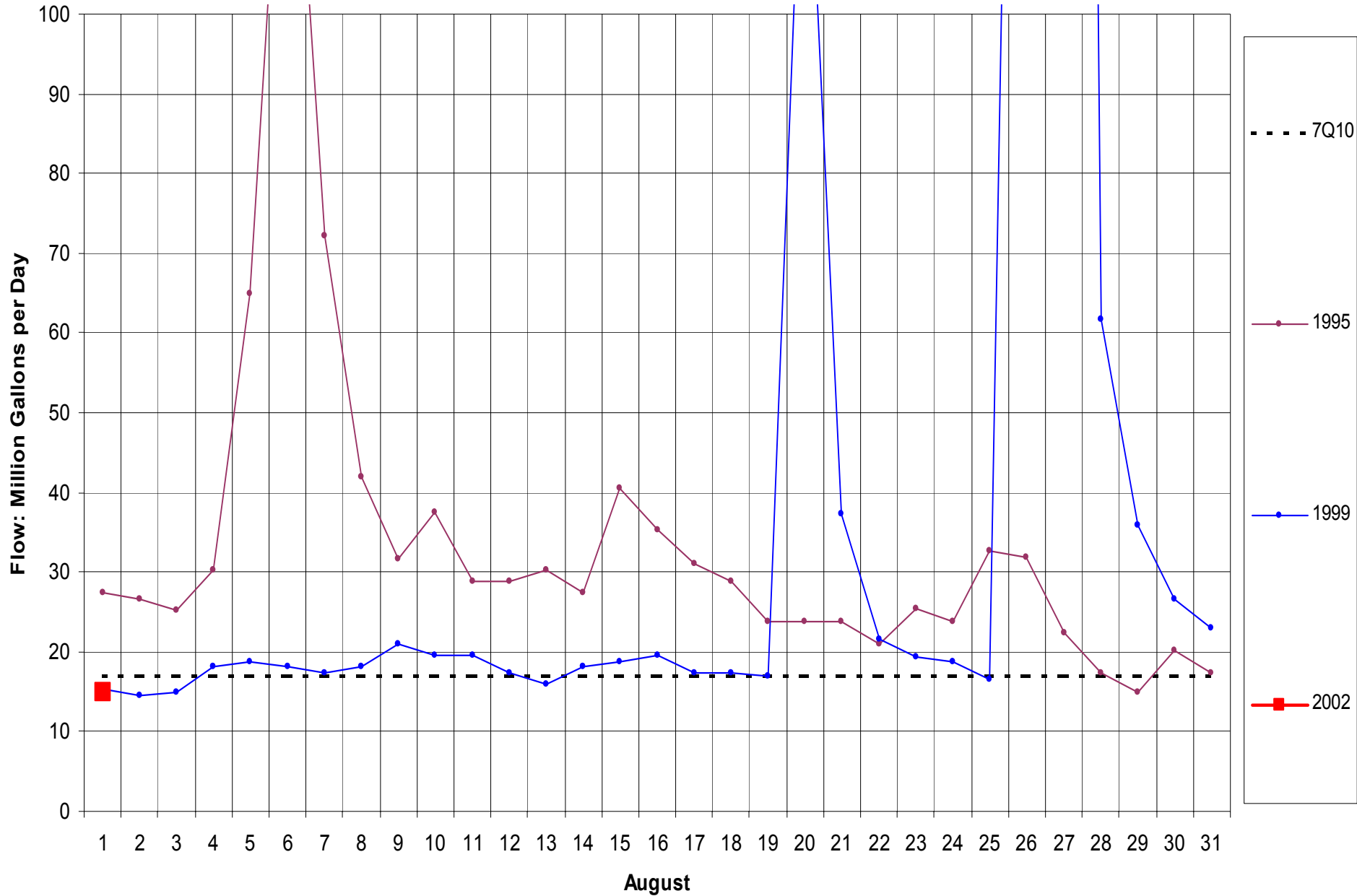
White Clay Creek at Newark Streamflow Data, August 2002

*The 7Q10 is the minimum flow necessary to protect fishery and habitat that is likely to occur for 7 consecutive days, once every 10 years



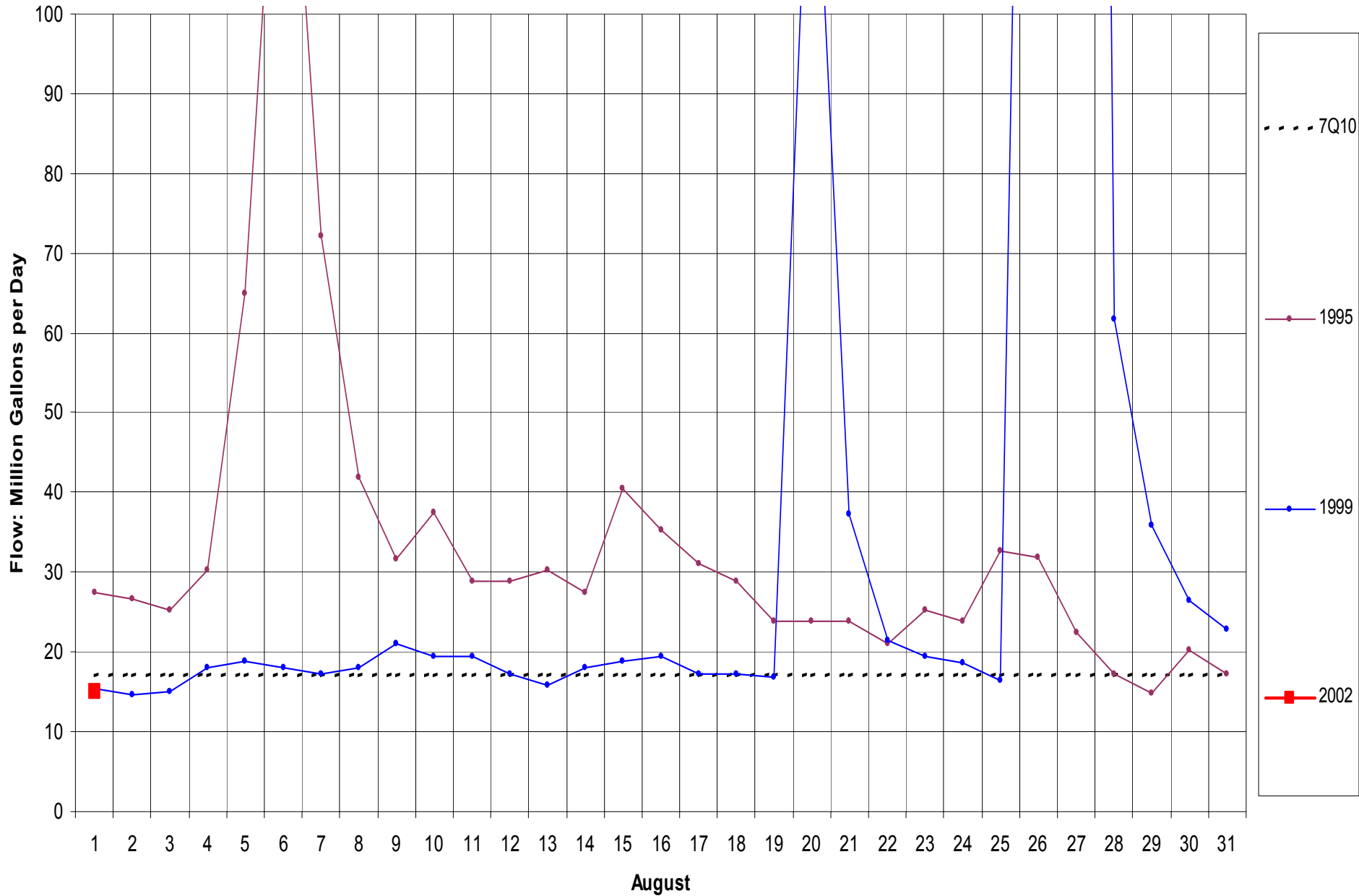
White Clay Creek at Stanton Streamflow Data, August 2002

*The 7Q10 is the minimum flow necessary to protect fishery and habitat that is likely to occur for 7 consecutive days, once every 10 years

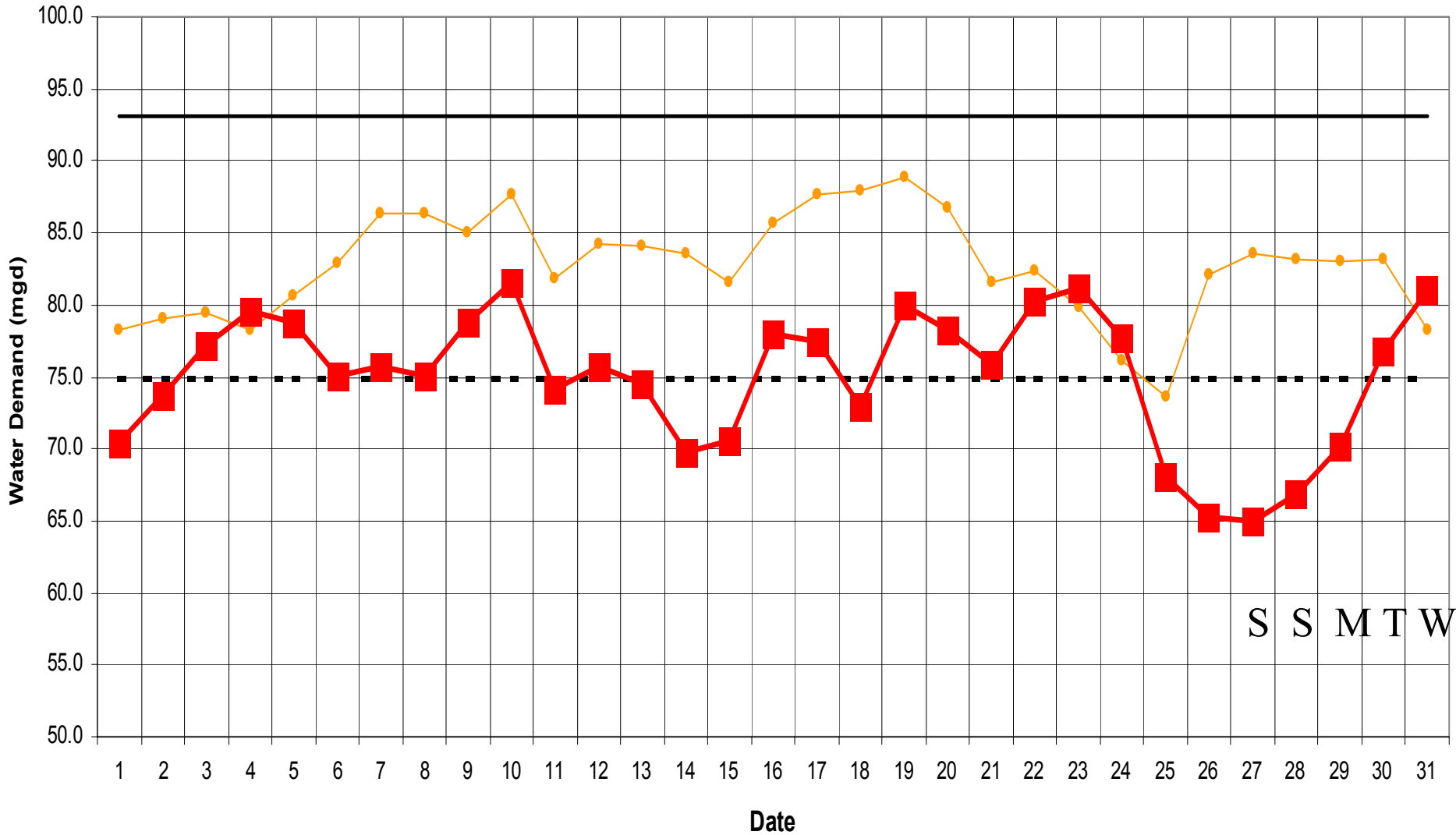


White Clay Creek at Stanton Streamflow Data, August 2002

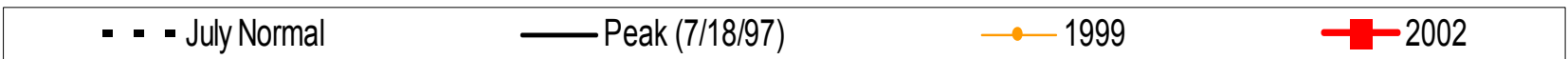
*The 7Q10 is the minimum flow necessary to protect fishery and habitat that is likely to occur for 7 consecutive days, once every 10 years



Public Water Demand: New Castle County, July 2002

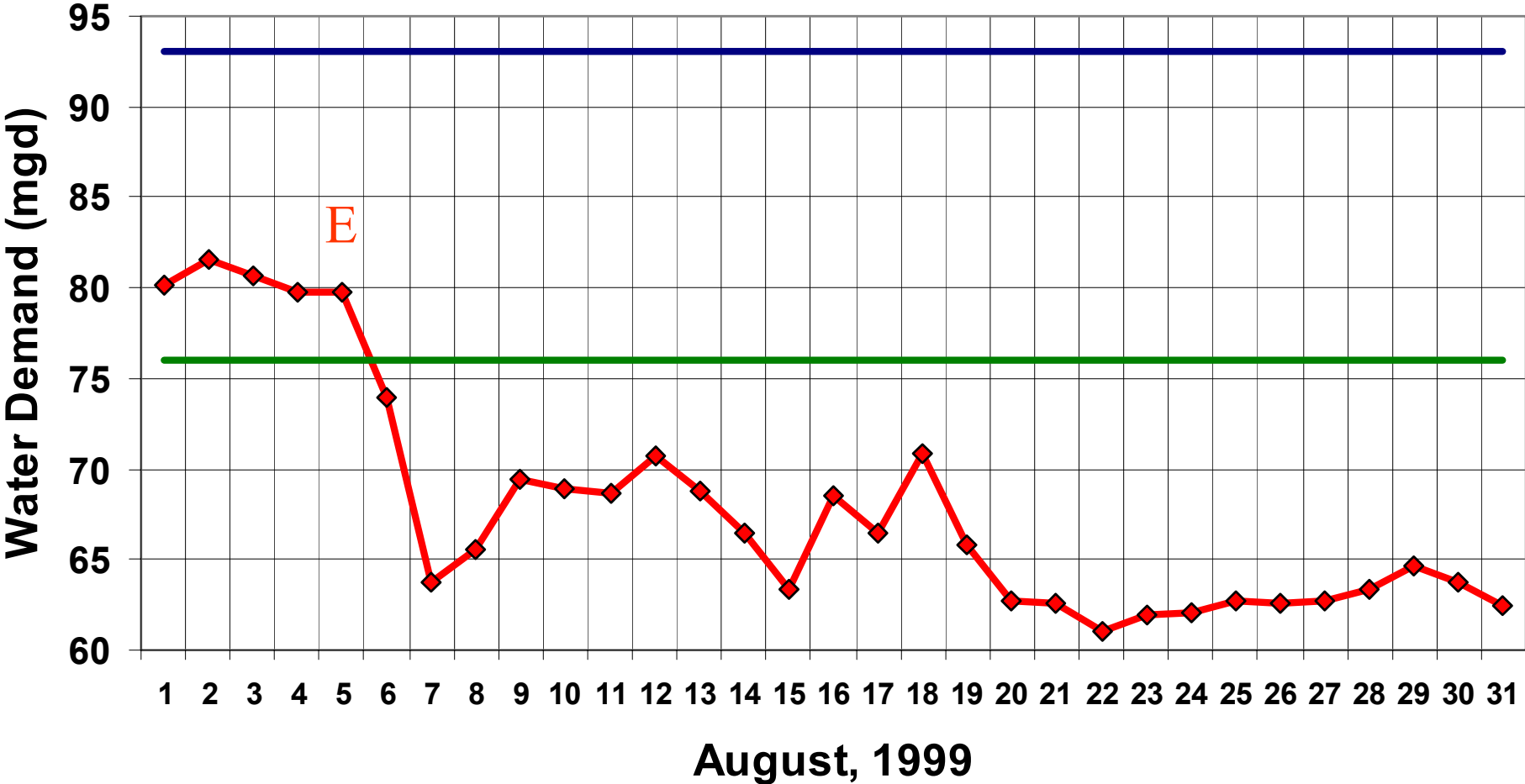


Compiled by the University of Delaware, Institute for Public Administration, Water Resources Agency, using data from: Artesian Water Co., City of Newark, City of Wilmington, New Castle Municipal Services Commission, and United Water Delaware



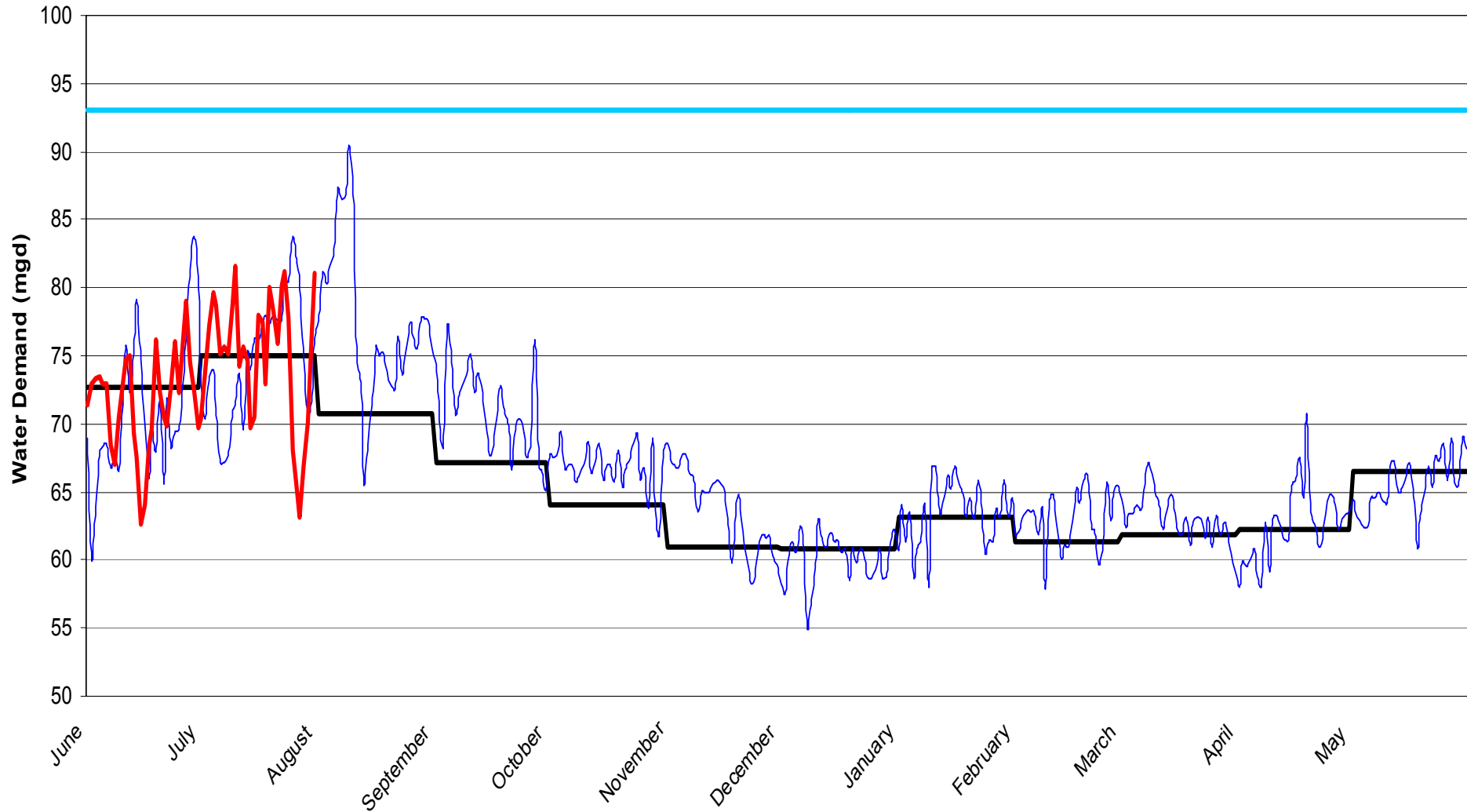
S S M T W

Public Water Demand Northern New Castle County



◆ August, 1999 — Historic Peak (7/18/97) — August Normal

Public Water Demand: New Castle County, June 2002 - May 2003



Compiled by the University of Delaware, Institute for Public Administration, Water Resources Agency, using data from: Artesian Water Co., City of Newark, City of Wilmington, New Castle Municipal Services Commission, and United Water Delaware

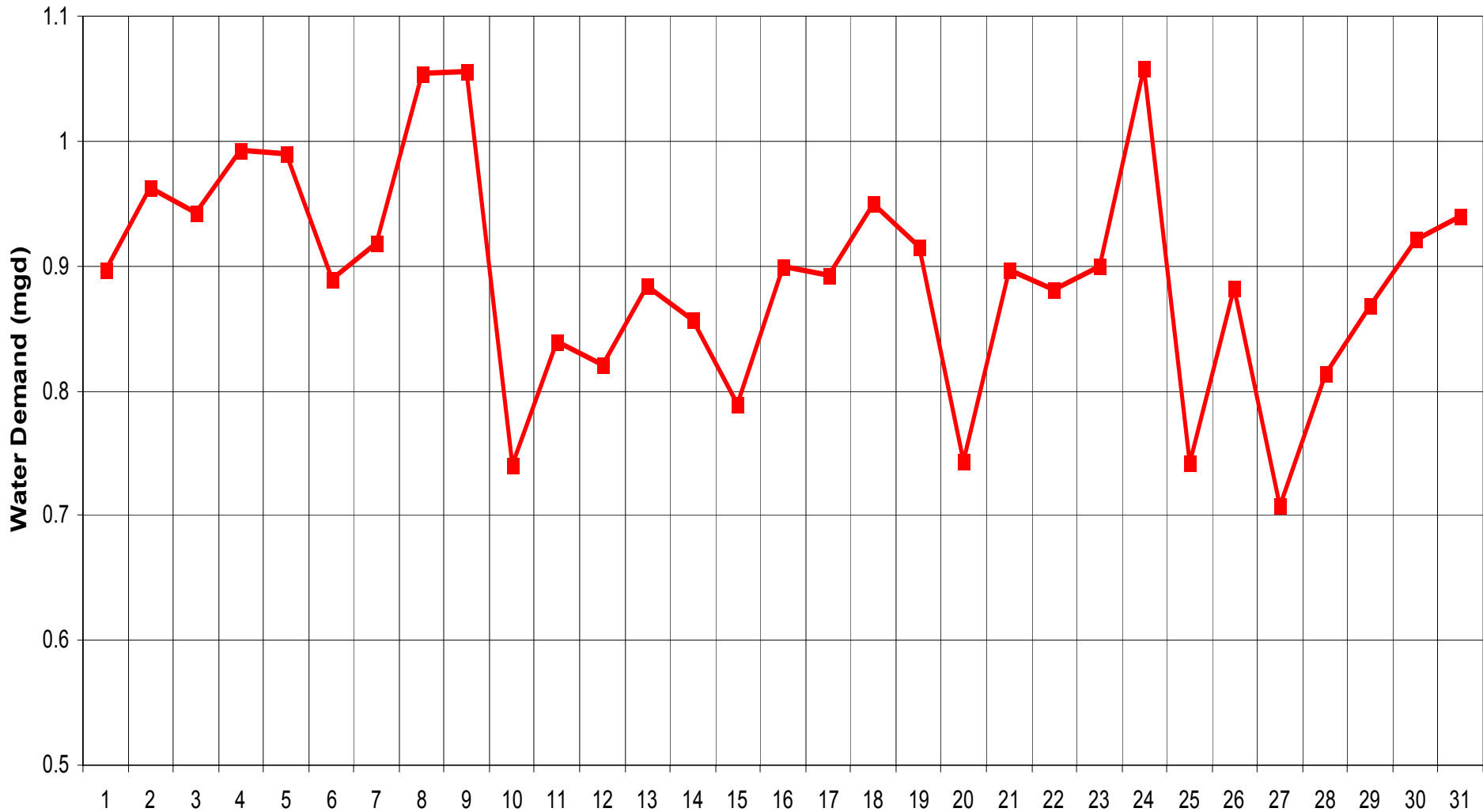
— Monthly Average

— June 2001 - May 2002

— Historic Peak (7/18/97)

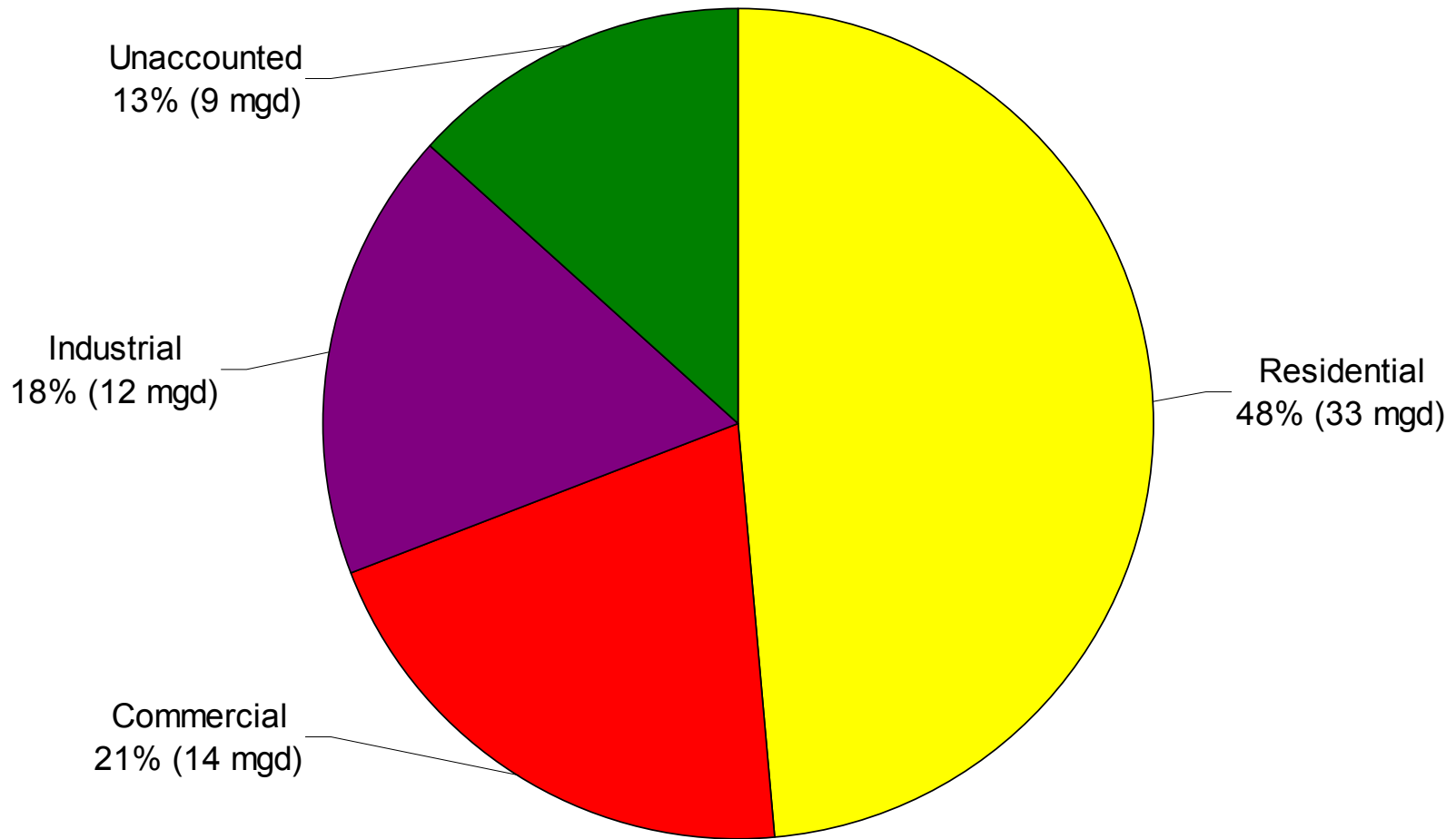
— June 2002 - May 2003

Public Water Demand: AWC- So. New Castle County for July 2002



2002

Public Water Demand in Northern Delaware



Water Demand

- Public water demand in New Castle County varies from **60 mgd** normally to **90 mgd** peak.
- The 1.5 peaking factor is due almost entirely to outdoor water use.
- Most people use around **100 gallons** of water per day . We need about **10 gallons** per day to live.

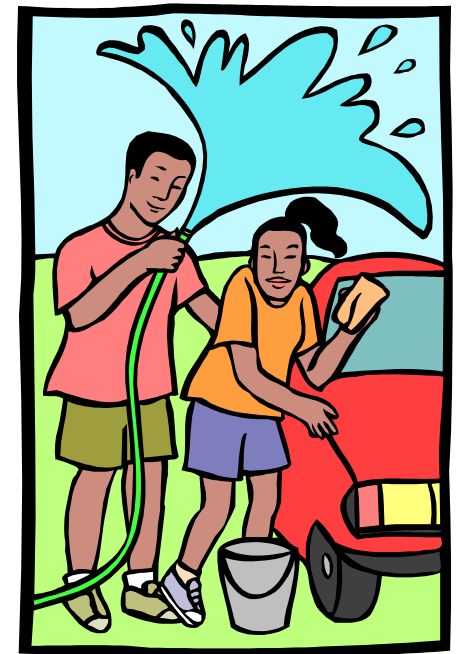
Conserving Inside

- Shorter showers
 - save **50 gallons** every 10 minutes
- Don't flush trash down the toilet
 - save **5 gallons** per flush
- Full loads in the dishwasher
 - save **12 gallons** per load
- Full loads in the laundry
 - save **40 gallons** per load
- Fix leaks in your plumbing
 - Save **100 gallons** per day

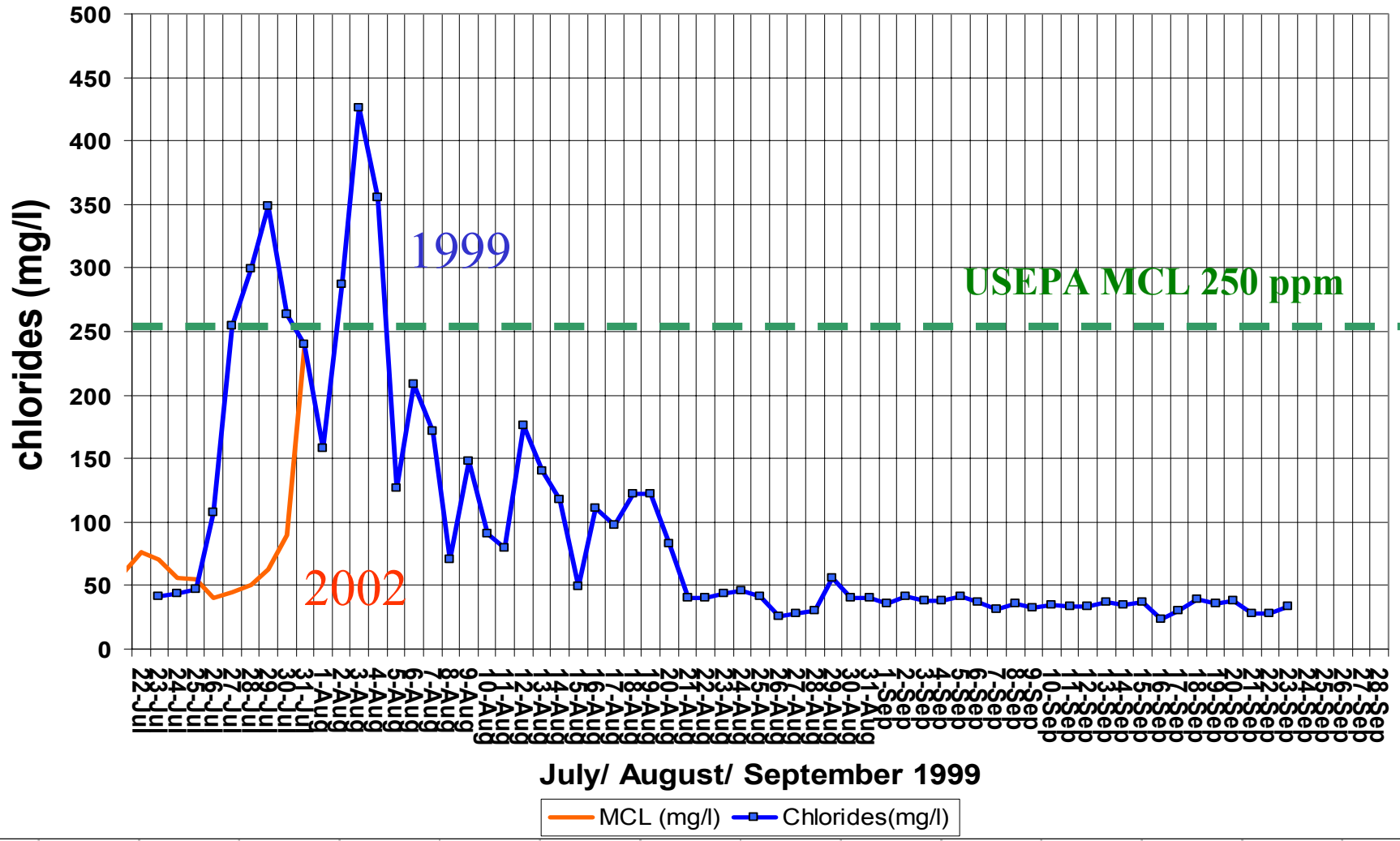


Conserving Outside

- Water the lawn less frequently
 - Save **600 gallons** in a few hours
- Water plants in the morning
 - Save **300 gallons**
- Wash your car on the grass
 - Save **100 gallons**
- Use a broom to sweep sidewalks
 - Save **50 gallons** in 10 minutes

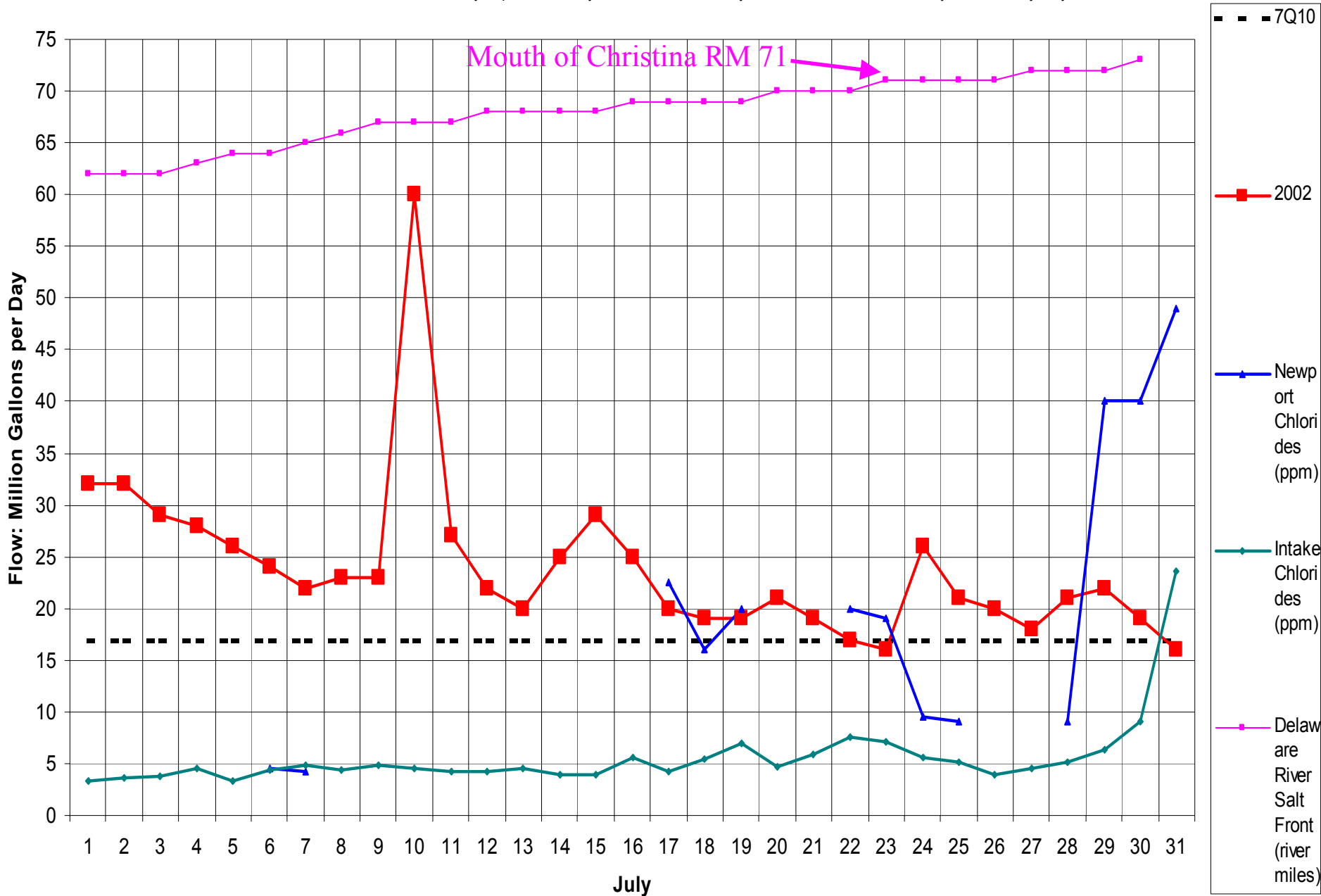


Raw Chlorides White Clay Creek at Stanton



White Clay Creek at Stanton Streamflow vs. Chloride Data, July 2002

*The 7Q10 is the minimum flow necessary to protect fishery and habitat that is likely to occur for 7 consecutive days, once every 10 years



HOOPE'S RESERVOIR - Water Level

