

Brandywine-Christina Healthy Water Fund

Martha Narvaez - University of Delaware - Water Resources Center
2017 Delaware Estuary Science & Environmental Summit

Project Goal

Fishable, swimmable, potable

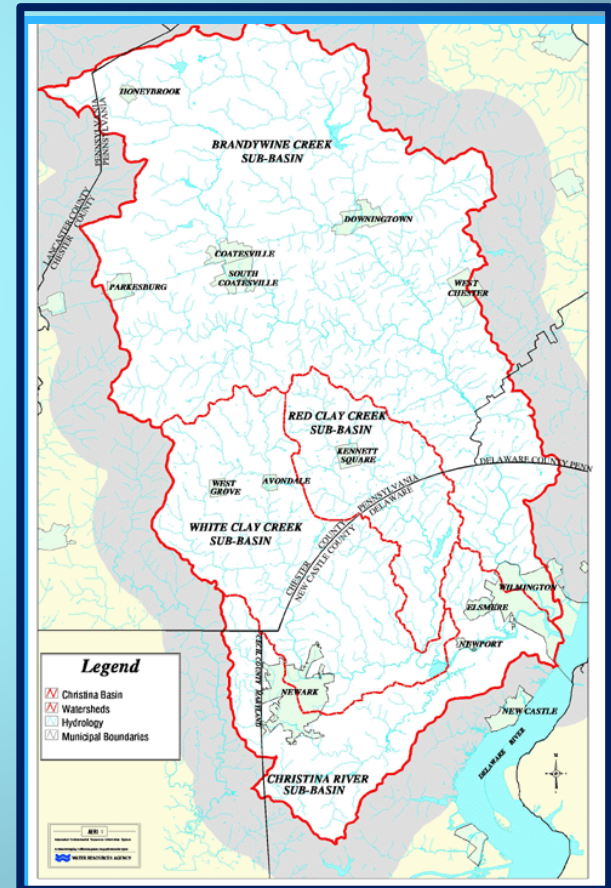
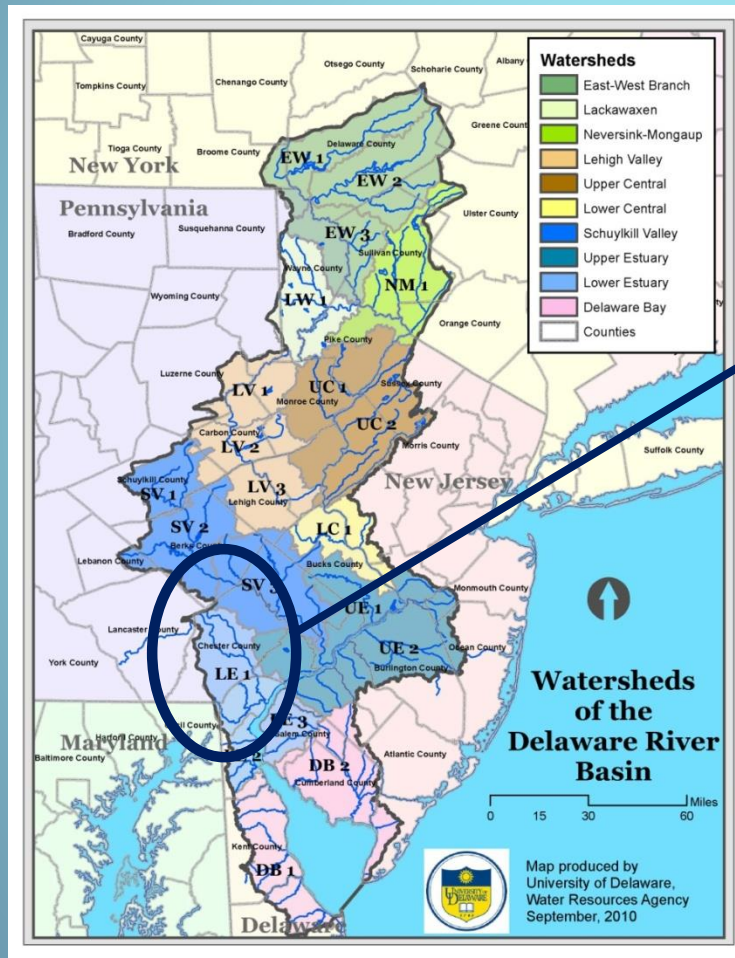


Water Fund

A written agreement between stakeholders that guides implementation of conservation and includes:



The Brandywine-Christina Watershed

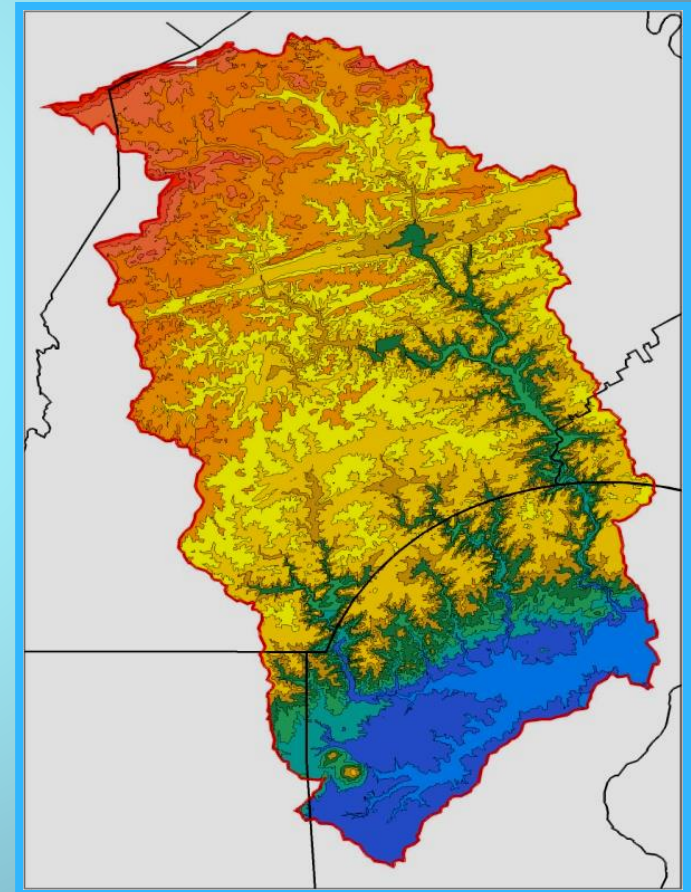


Brandywine-Christina Watershed

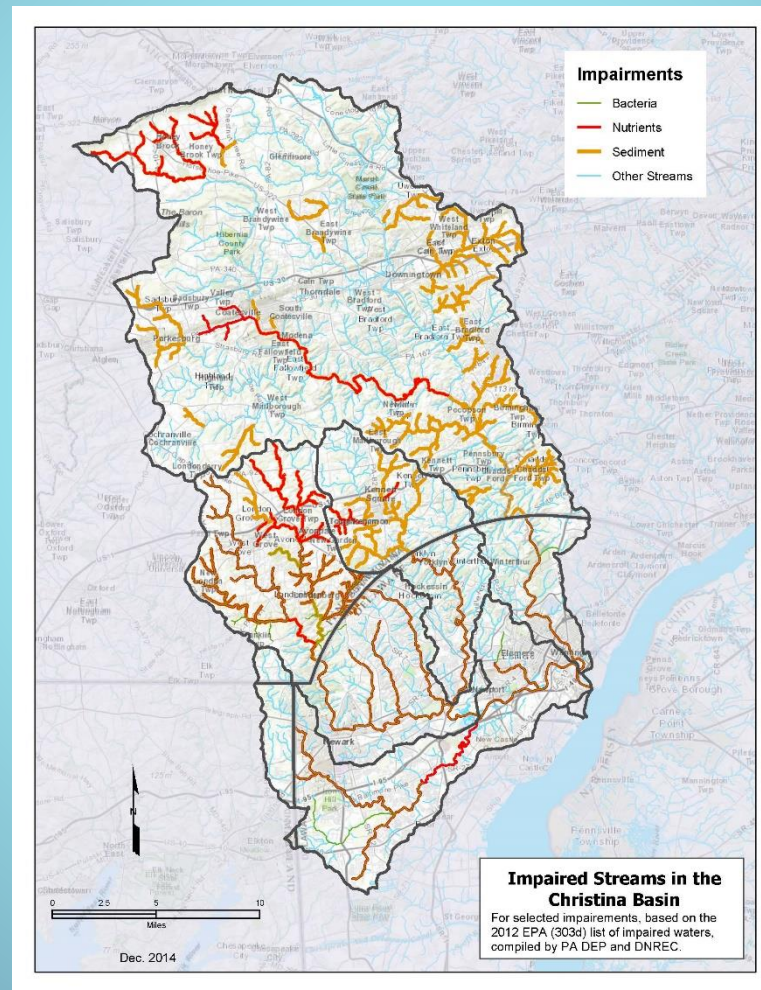
an interstate watershed

State	Area (sq. mi.)
DE	157 (28%)
PA	400 (71%)
MD	8 (1%)
TOTAL	565 (100%)

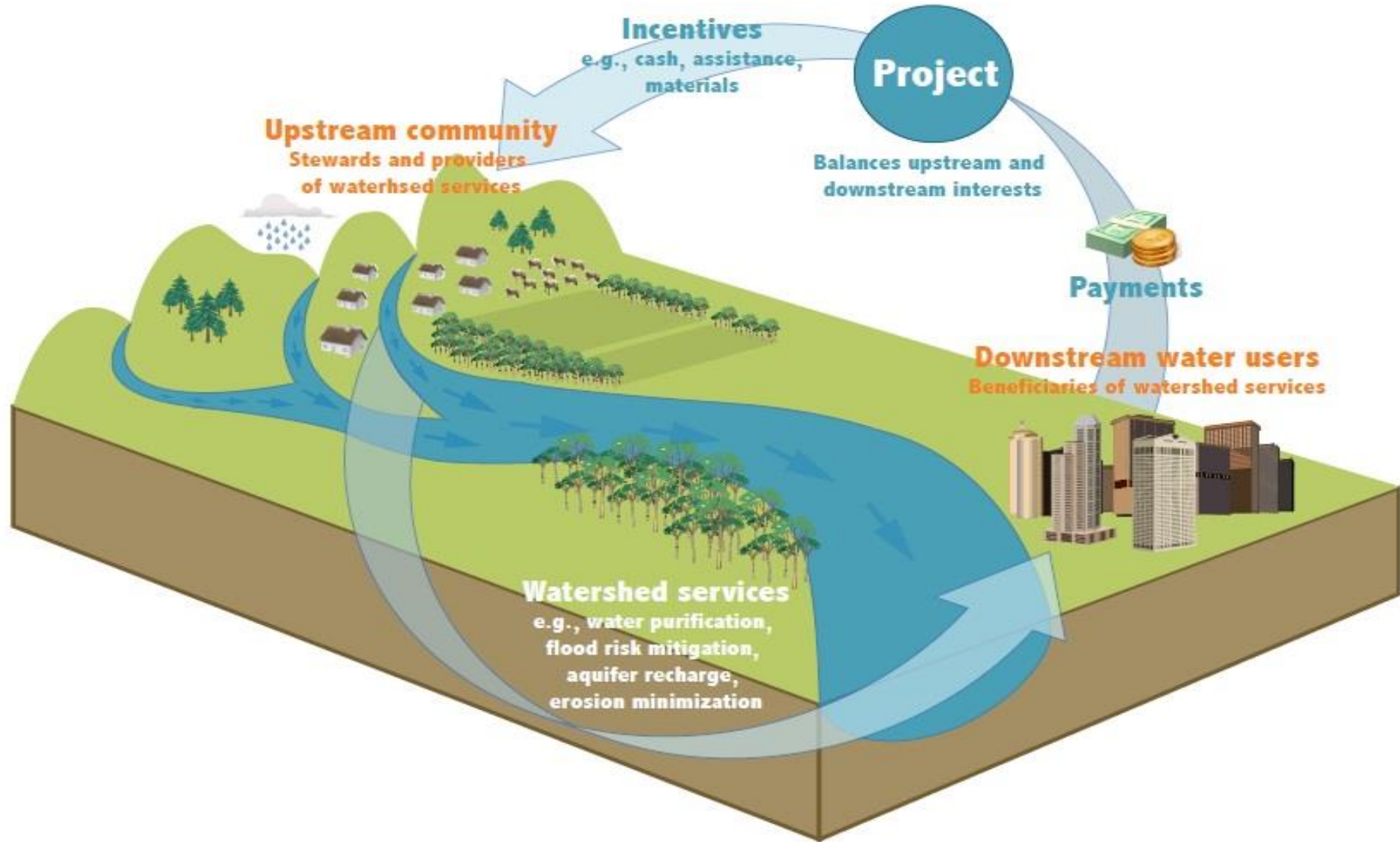
Watershed	Area (sq. mi.)
Brandywine Creek	325
Red Clay Creek	55
White Clay Creek	107
Christina River	78
TOTAL	565



Impairments in the Brandywine-Christina



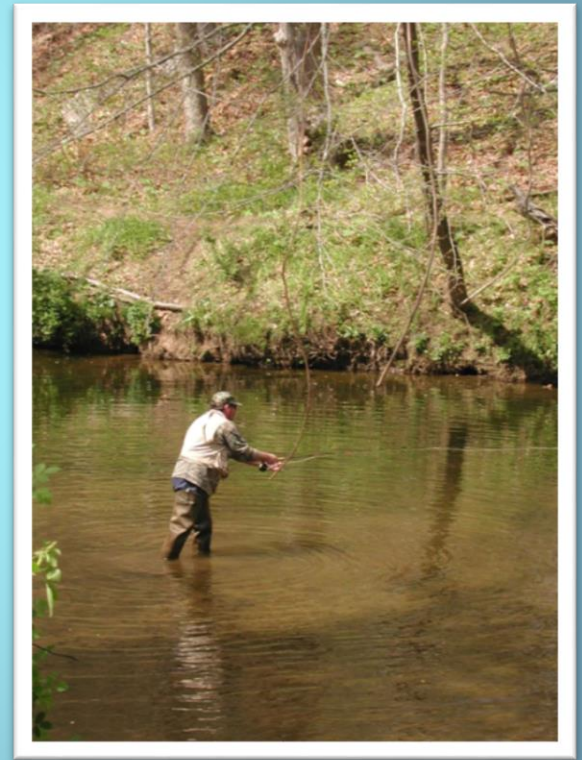
The Opportunity: The Water Fund Model



Brandywine-Christina Healthy Water Fund

Year 1: Feasibility Study

- Watershed characterization
- Advisory panel process
- Case studies and models
- Economic analysis
- Key stakeholders
- Recommendations



To be successful, the Water Fund must:

- Add value to conservation in the watershed and not duplicate or diminish the overall impact of preexisting initiatives;
- Measure water quality improvements in the watershed against the goals of swimmable, fishable and potable waters, which will require removing impairments from the watershed's streams; and
- Must be able to demonstrate a favorable economic return on investment.

Brandywine-Christina Healthy Water Fund

Year 2 & 3: Business Plan

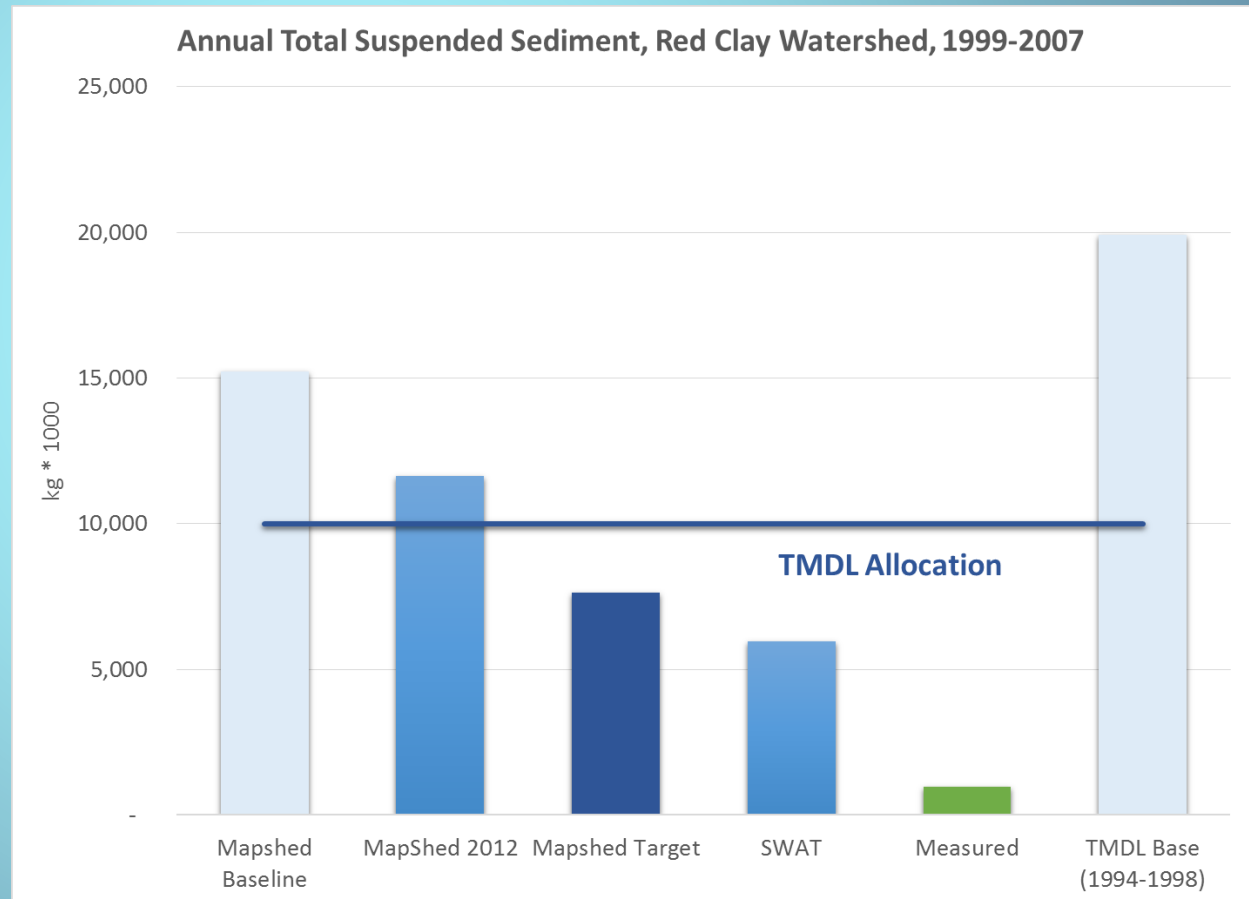
Research focus areas:

1. Technical Analysis
2. Regulatory Policy
3. Governance and Collaboration
4. Communications Research
5. Business Plan

Technical Analysis

Research focus areas:

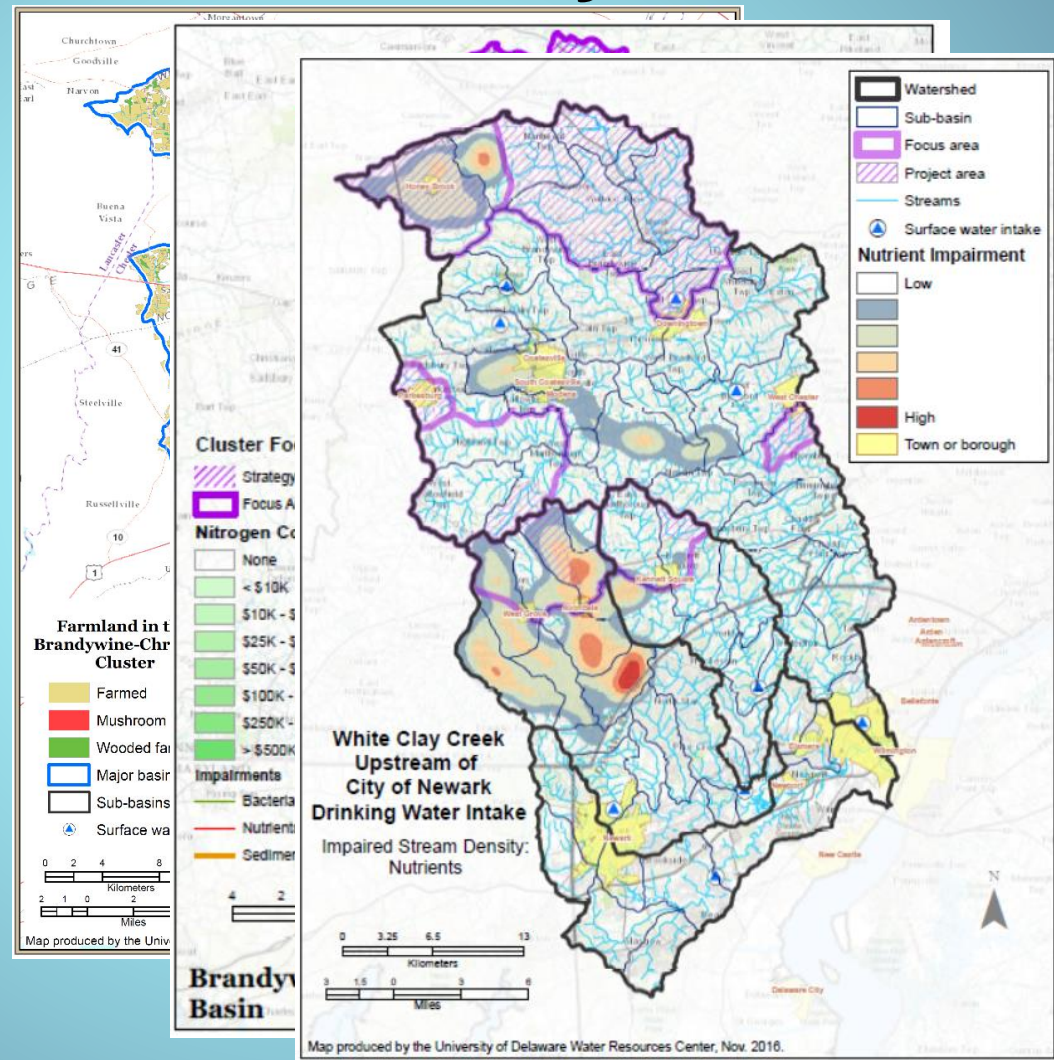
1. **Technical Analysis**
2. Regulatory Policy
3. Governance and Collaboration
4. Communications Research
5. Business Plan



Technical Analysis

Research focus areas:

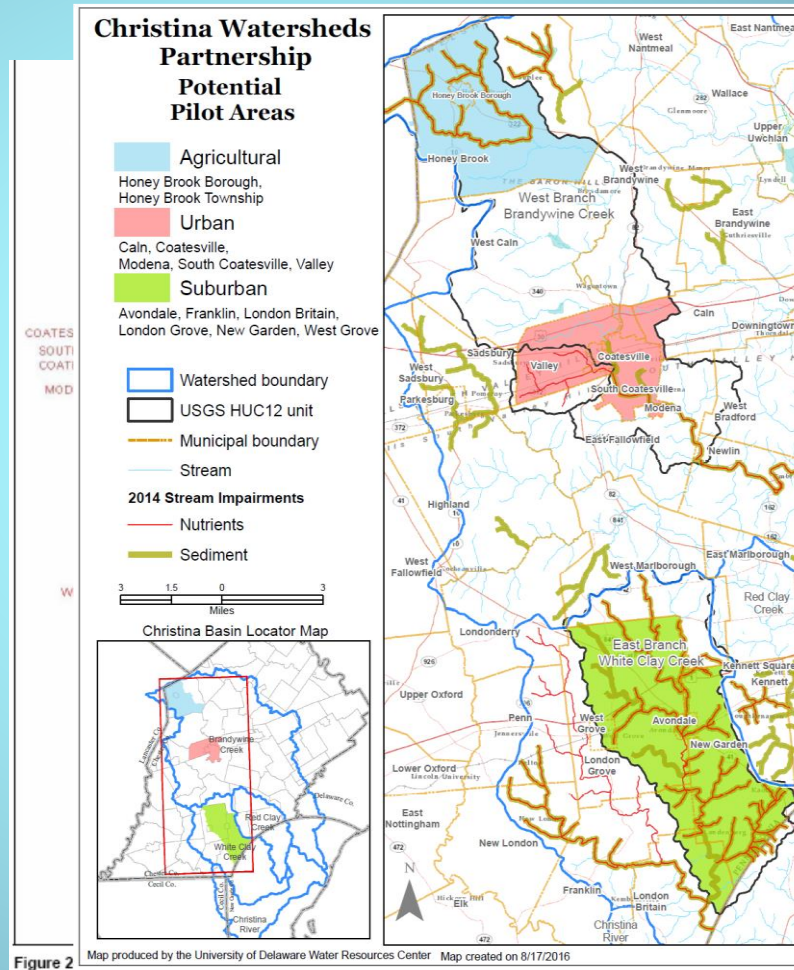
1. **Technical Analysis**
2. Regulatory Policy
3. Governance and Collaboration
4. Communications Research
5. Business Plan



Regulatory Policy

Research focus areas:

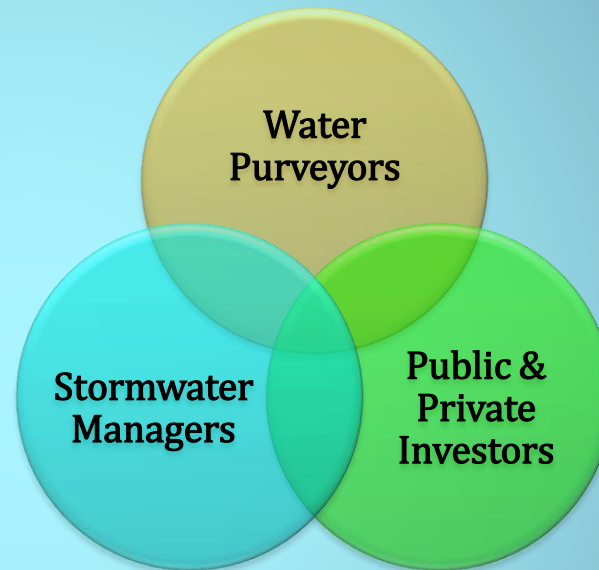
1. Technical Analysis
2. **Regulatory Policy**
3. Governance and Collaboration
4. Communications Research
5. Business Plan



Governance and Collaboration

Research focus areas:

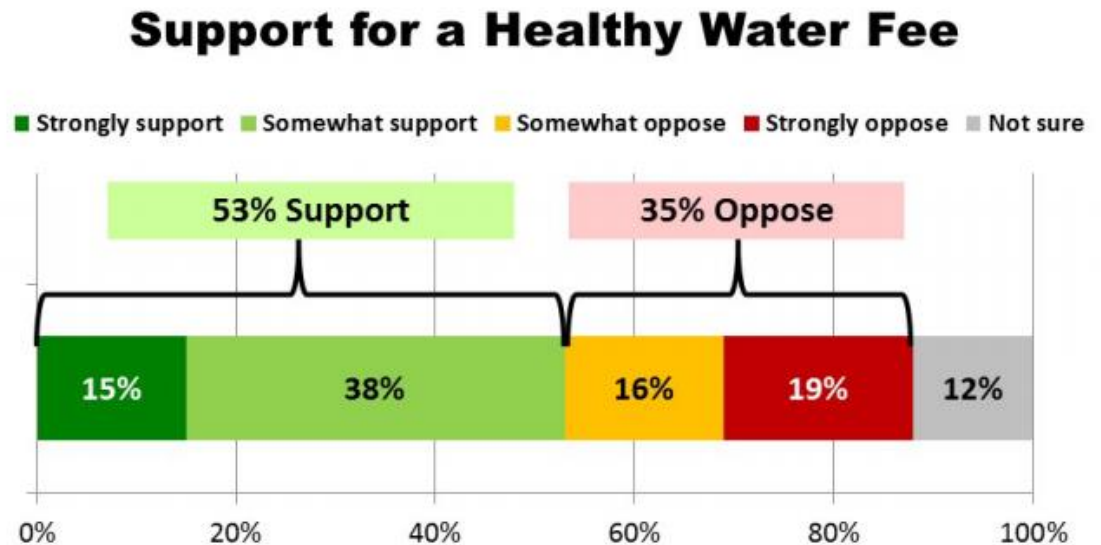
1. Technical Analysis
2. Regulatory Policy
3. **Governance and Collaboration**
4. Communications Research
5. Business Plan



Communications Research

Research focus areas:

1. Technical Analysis
2. Regulatory Policy
3. Governance and Collaboration
- 4. Communications Research**
5. Business Plan

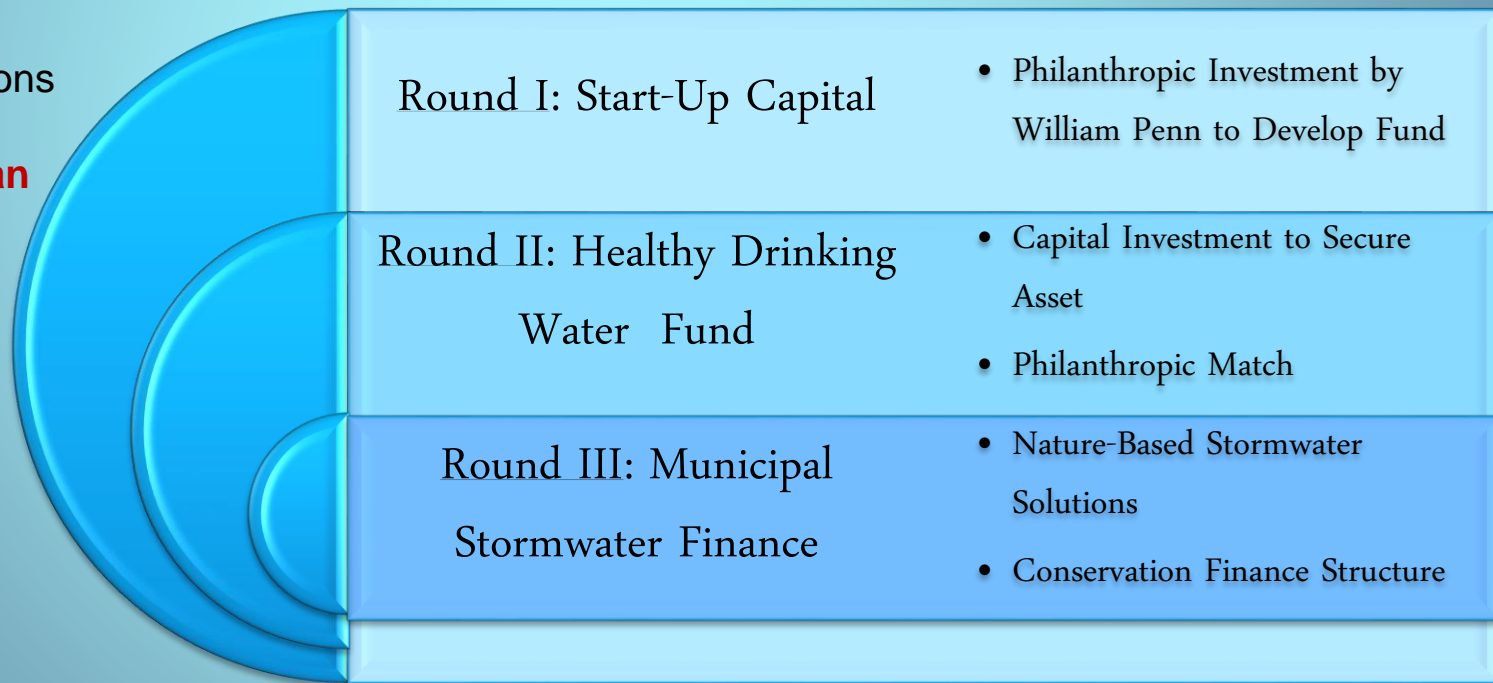


"If leaders in the State said more money would be needed to solve the problem of water pollution in Pennsylvania, and they proposed a monthly fee that was reasonable, would you be likely to support or oppose that?"
(If support/oppose): "Is that strongly or just somewhat {support/oppose}?"

Business Plan

Research focus areas:

1. Technical Analysis
2. Regulatory Policy
3. Governance and Collaboration
4. Communications Research
5. **Business Plan**



Next Steps

- February 2017: Draft Business Plan
- February – May 2017: Review, Comment and Revision
- June 2017: Final Business Plan Submission

Project information and reports available:

www.wrc.udel.edu/research/brandywine-christina-healthy-water-fund-2/

Martha Narvaez
Water Resources Center
University of Delaware
mcorrozi@udel.edu
www.wrc.udel.edu

