

DWRC Faculty and Scientists



Gerald J. Kauffman, Ph.D.
Director / Associate Professor
302-831-4929
jerryk@udel.edu

Jillian Young
Graduate Research Assistant
M.S. Water Science and Policy
jyoung@udel.edu

Martha B. Narvaez
Policy Scientist
302-831-4931
mcorrozi@udel.edu

Kelly Jacobs
Graduate Research Assistant
M.S. Energy and Environmental Policy
kjacobs@udel.edu

Andrew R. Homsey
Policy Scientist / GIS Lab
302-831-4932
ahomsey@udel.edu

Angela Speers
Sponsored Programs Coordinator
302-831-8874
aspeers@udel.edu

Nicole M. Minni
Associate Policy Scientist
GIS Lab / Lewes Campus
302-645-4353
nminni@udel.edu

The Delaware Water Resources Center (DWRC) is a unit of the Institute for Public Administration (IPA), a research center within the School of Public Policy & Administration (SPPA) at the University of Delaware. Dr. Jerome Lewis is the IPA Director and can be reached at 302-831-8971.

Directions

DWRC has two Delaware offices its main office on the University of Delaware's Newark campus, between Penny Hall and the Perkins Student Center, and on the Hugh R. Sharp campus of the University of Delaware in Lewes. Detailed directions for both locations are at www.wrc.udel.edu.



DWRC Newark Office
DGS Annex
261 Academy Street
University of Delaware
Newark, Delaware 19716

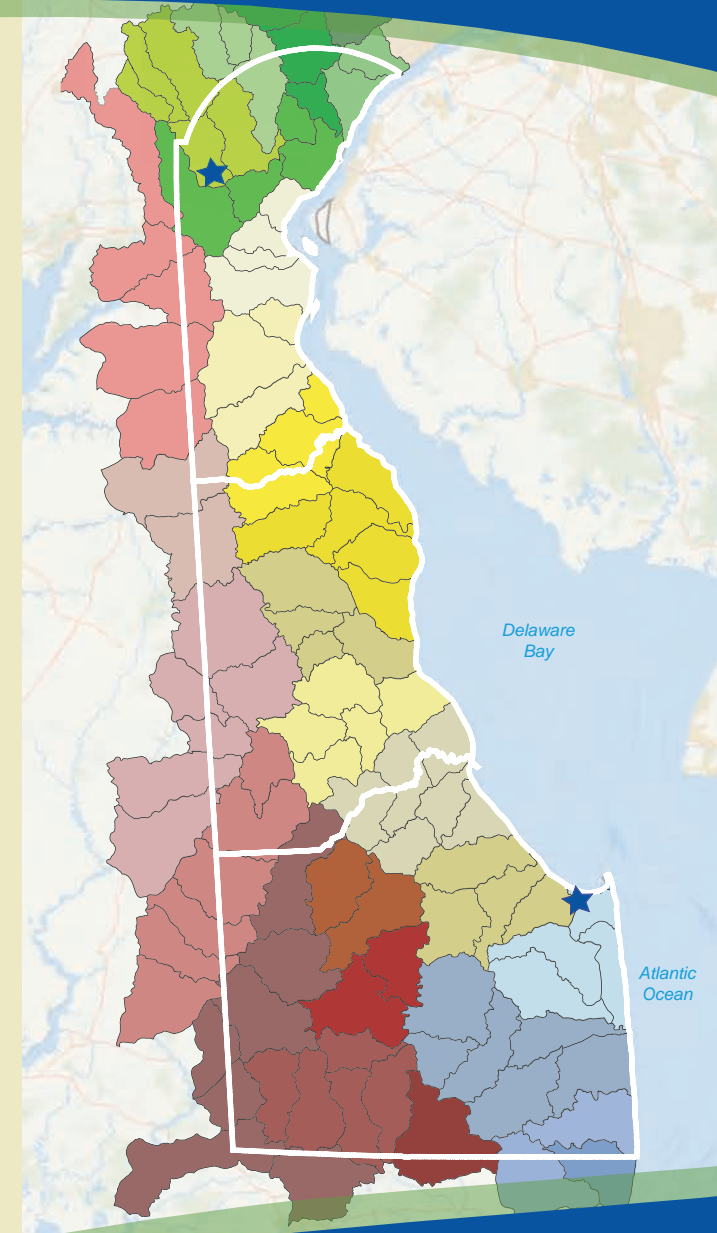
DWRC Lewes Office
805 Pilottown Road
Pollution Ecology Lab, Room 109
Lewes, Delaware 19958



An Equal Opportunity / Affirmative Action Employer

The University of Delaware is committed to assuring equal opportunity to all persons and does not discriminate on the basis of race, color, gender, religion, ancestry, national origin, sexual orientation, veteran status, age, or disability in its educational programs, activities, admissions, or employment practices as required by Title IX of the Education Amendments of 1972, Title VI of the Civil Rights Act of 1964, the Rehabilitation Act of 1973, the Americans with Disabilities Act, other applicable statutes and University policy. Inquires concerning these statutes and information regarding campus accessibility should be referred to the Affirmative Action Office, 305 Hulihan Hall, (302) 831-2835 (voice), (302) 831-4563 (TDD).

Water Resources Center



Mission

The University of Delaware Water Resources Center (DWRC), established in 1965, is one of the 54 National Institutes for Water Resources (NIWRs) at land-grant universities in the 50 states, District of Columbia and island territories of Guam, Puerto Rico, and U.S. Virgin Islands. The DWRC receives funding through Section 104 of the Water Resources Research Act of 1984, which was originally signed into law by Lyndon Baines Johnson in 1964. The U.S. Geological Survey administers the provisions of the Act and provides oversight of the nation's Water Resources Centers through the National Institute of Water Resources (NIWR).

As a member of the NIWR, the DWRC has two key missions related to Delaware's water resources – our precious groundwater aquifers and our streams, ponds, lakes, and coastal waters to: (1) support research, education, and public outreach programs that focus on water management issues of importance to Delaware citizens and (2) to foster and support training and education programs for the future water scientists, engineers, managers, and policy-makers.



Education

DWRC provides an important role in water resources education at the University of Delaware and to the greater public. The DWRC carries out its education role through participating in outreach activities; offering courses, seminars and forums with a water resources focus; and advising undergraduate and graduate students through funded assistantships.



Courses Offered

- UAPP 611: Regional Watershed Management
- GEOG 432: Environmental Hydrology
- CIEG 440: Water Resources Engineering
- UAPP 667: GIS Applications in Public / Nonprofit Sectors
- UAPP 652: GIS in Public Policy

Conferences

- Water Policy Forum
- Delmarva GIS Conference

Community Events

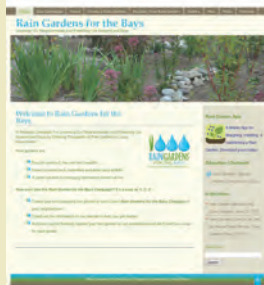
- Delaware Clean Water Rally
- Delaware GIS Day
- University of Delaware Ag Day
- University of Delaware Coast Day



Public Service

DWRC provides water policy assistance to governments in Delaware and the surrounding region. This public service role is significant to the mission of the College of Arts & Sciences and the School of Public Policy & Administration (SPPA). DWRC takes a regional, intergovernmental approach to water management since watersheds and aquifers cross many political jurisdictions.

The Water Resources Agency, a project of the DWRC, receives support from Delaware, New Castle County, and the cities of Wilmington and Newark to provide water resources assistance to the public with regard to water supply, water quality, and watershed planning and management.



Water Supply

- Delaware's Water Supply Coordinating Council
- Office of the State Water Coordinator
- New Castle County Water Resource Protection Areas, Technical Advisory Committee
- Delaware Source Water Assessment and Protection Program

Watershed Management and Planning

- Christina Basin Clean Water Partnership
- White Clay Creek Wild and Scenic Management Committee
- Nonpoint Education for Municipal Officials (NEMO)
- Floodplain/Stormwater Management

Mapping and Data Services

- Comprehensive Plan Mapping
- Mapping Applications
- Public and Private Education (K-12) Assistance
- Regional Watershed Mapping, Data Creation, and Analysis



Research

DWRC seeks opportunities to collaborate with University faculty, scientists, and students to fund, conduct, and publish water-resources research.

University of Delaware Experimental Watershed

Development of an experimental watershed as an on-campus education and research laboratory.

Geospatial Analysis and Information Management

Repository of core DWRC data and information collaboration in water research with other groups on campus and beyond. Advancement of GIS and remote-sensing technologies for water resources management.

Publications and Presentations

Research on topics such as water policy, watershed management, water rates, and public-private water management at regional and national conferences.

