

Water Quality Trends (1995-2019) in the Brandywine Christina Cluster along DE/PA Stateline

January 27, 2020

Gerald J. Kauffman, Director
University of Delaware
Water Resources Center
Newark, Del.



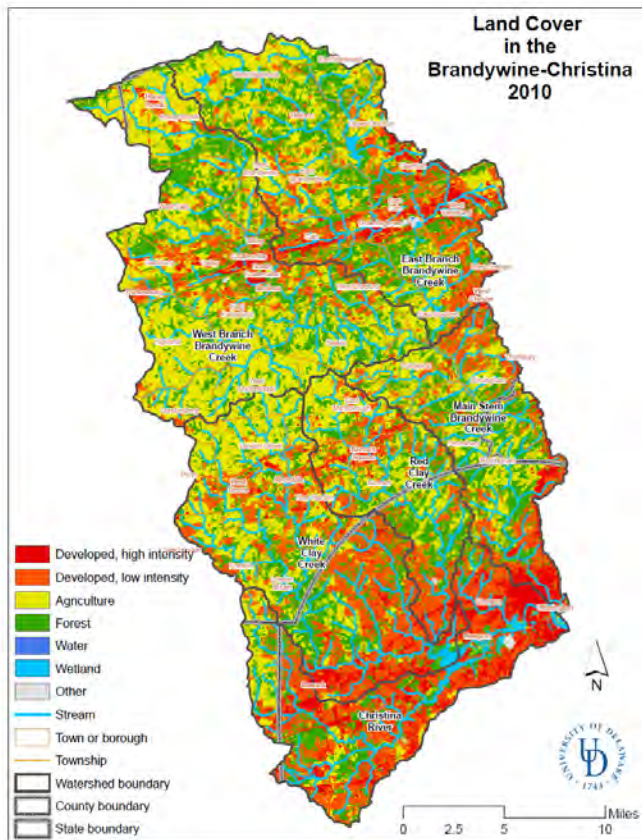
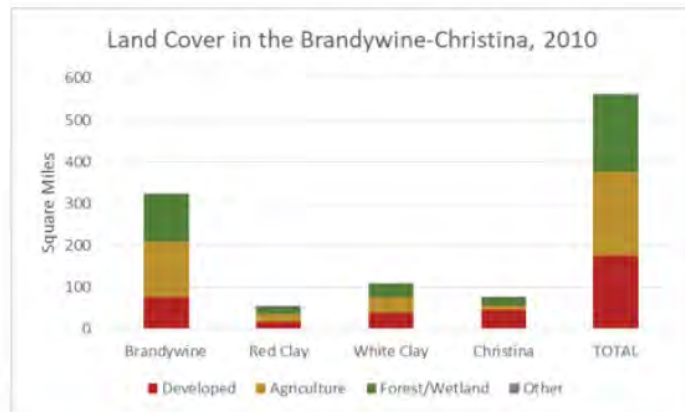
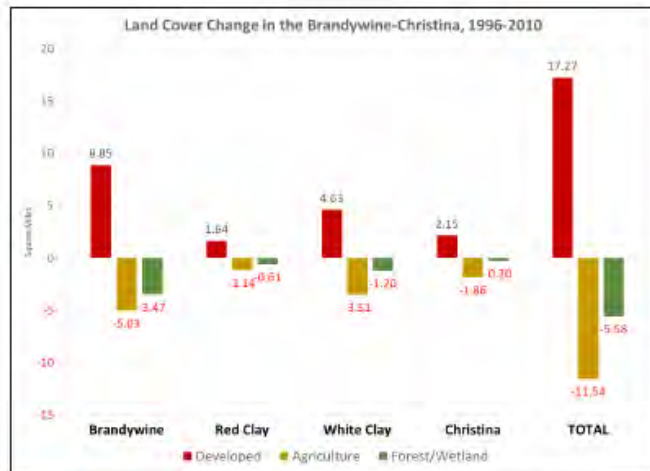
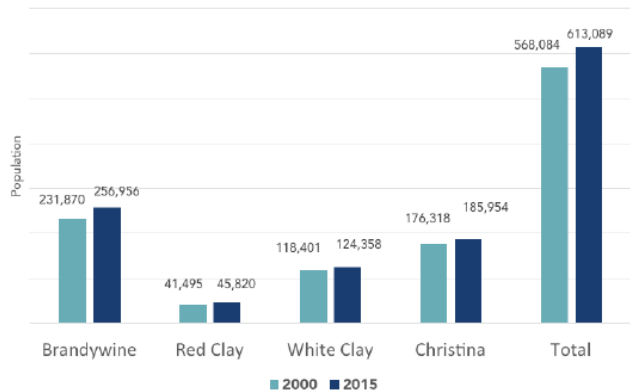


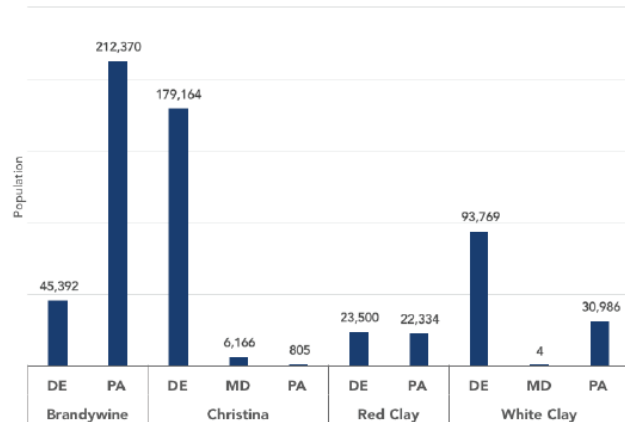
FIGURE S-1 Land cover in the Brandywine-Christina watershed, based on 2010 NOAA CSC C-CAP.



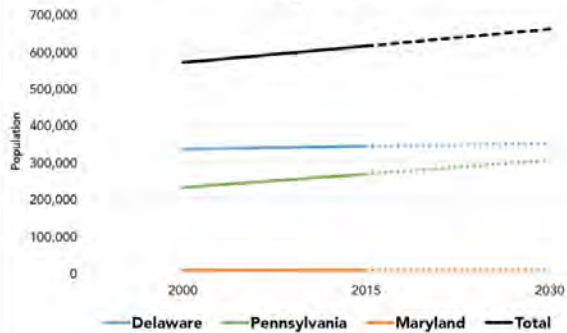
Population in the Brandywine-Christina by watershed between 2000 and 2015

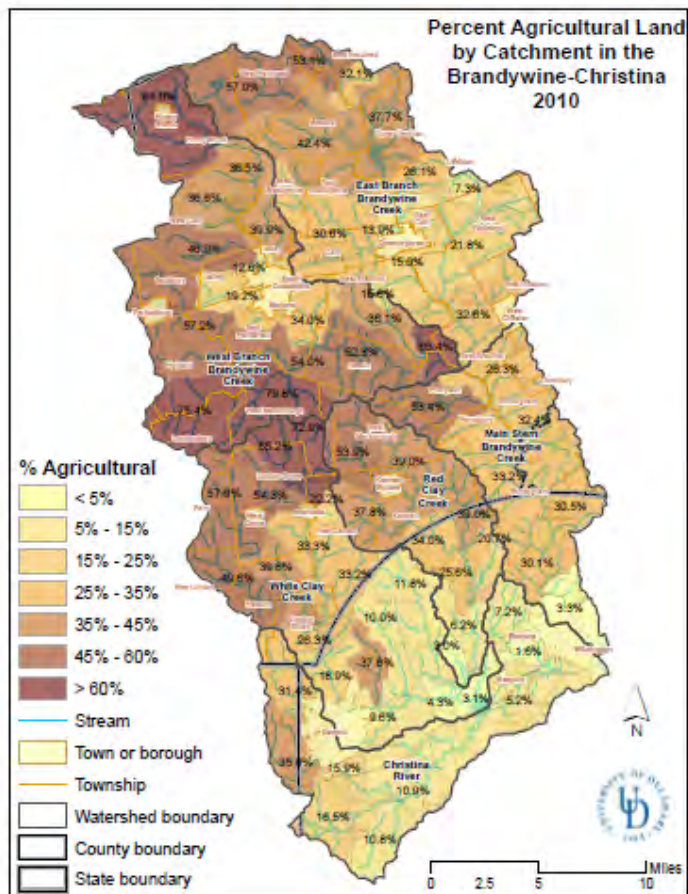


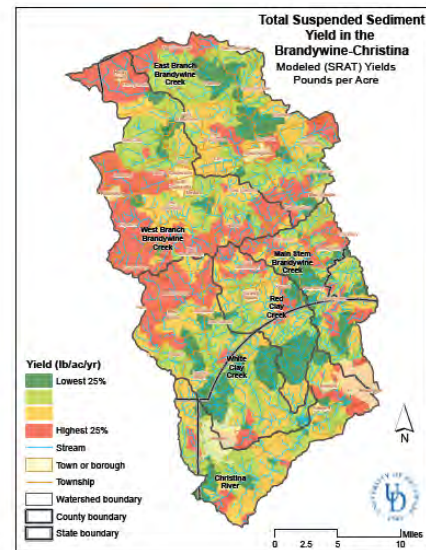
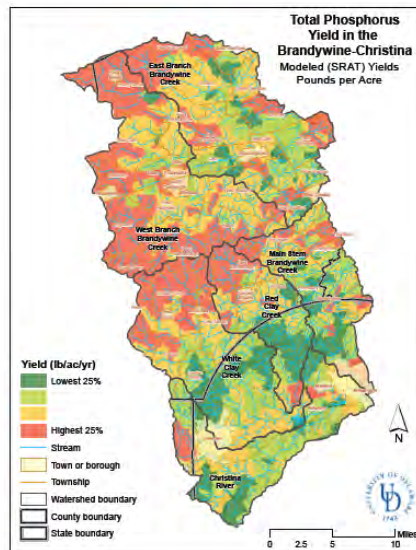
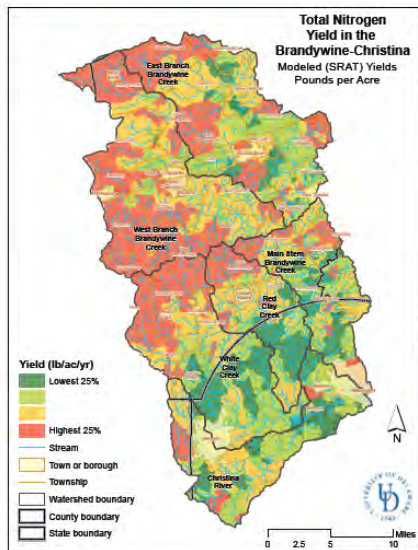
Total Population by State and Watershed, 2015



Population Trend in the Brandywine-Christina, by State



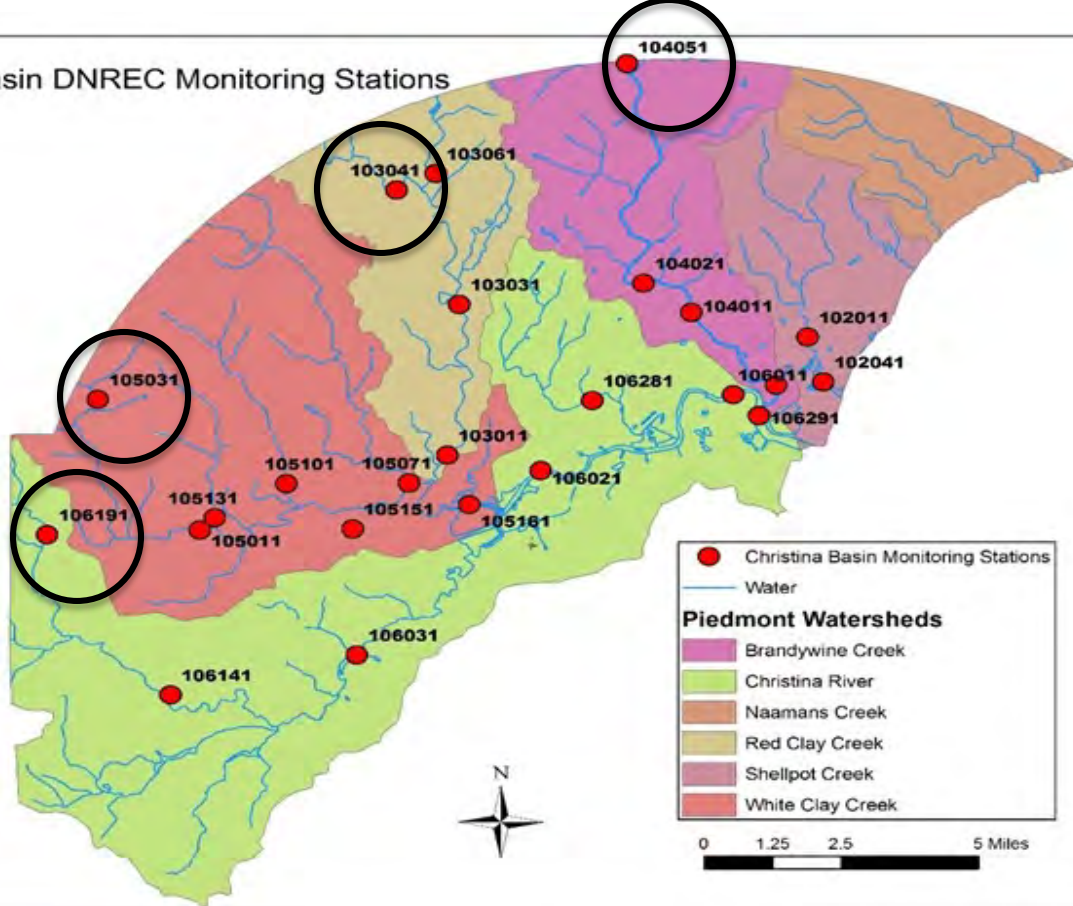




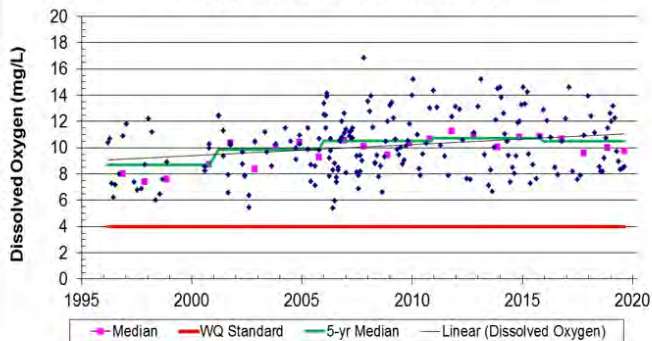
Delaware Stream Water Quality Criteria

Dissolved Oxygen	4.0 mg/l	Fishable
Enterococcus Bacteria	100 col./100 ml	Swimmable
Total Phosphorus	0.05-0.10 mg/l	TMDL Target
Total Nitrogen	1.0-2.0 mg/l	TMDL Target
Total Susp. Sediment	5-20 mg/l	DE Inland Bays

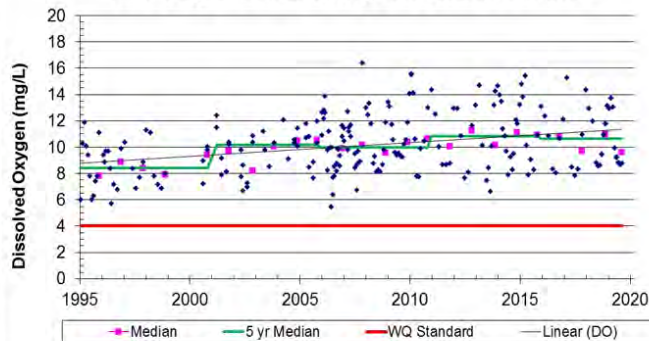
Christina Basin DNREC Monitoring Stations



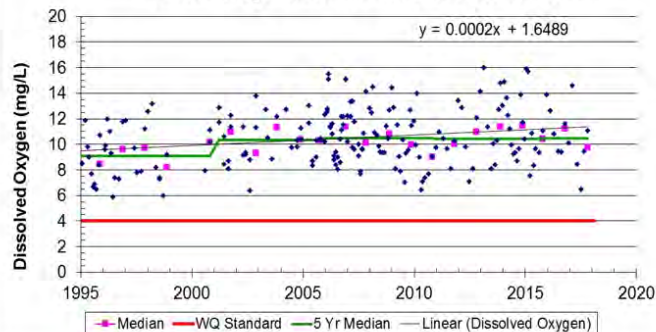
Brandywine Creek at Smith Bridge



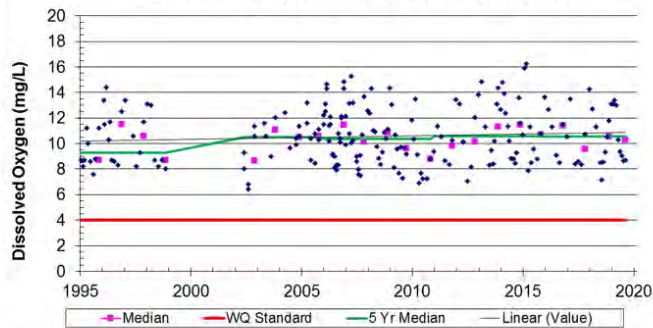
Red Clay Creek at Barley Mill Road, Ashland



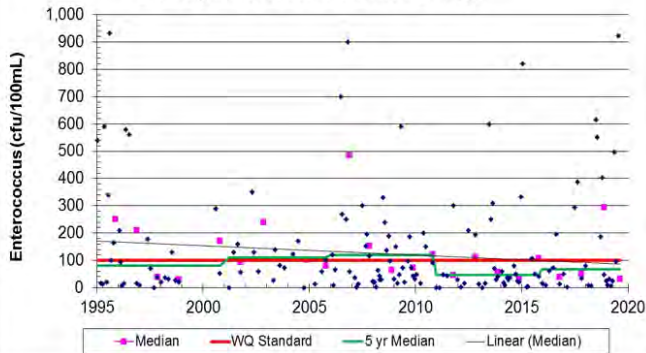
White Clay Creek at Chambers Rock Road



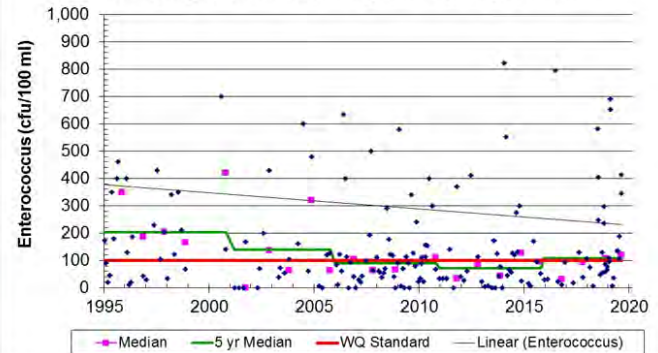
Christina River at Nottingham Rd., Rt. 273



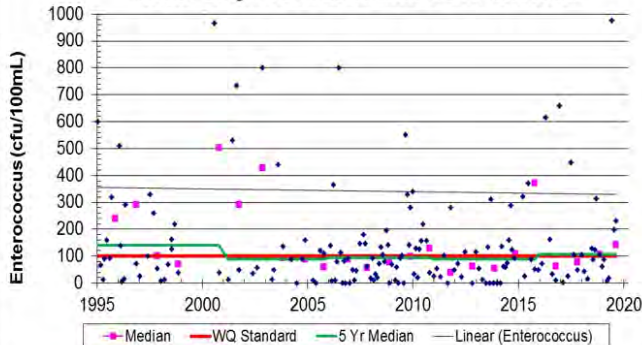
Brandywine Creek at Smith Bridge



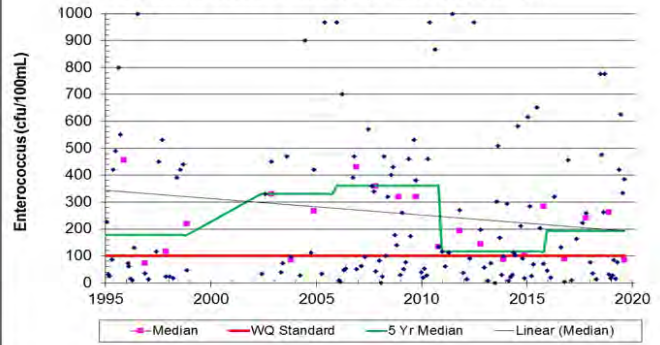
Red Clay Creek at Barley Mill Road, Ashland



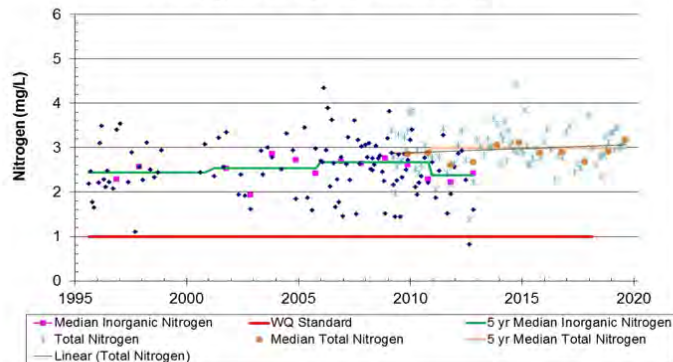
White Clay Creek at Chambers Rock Road



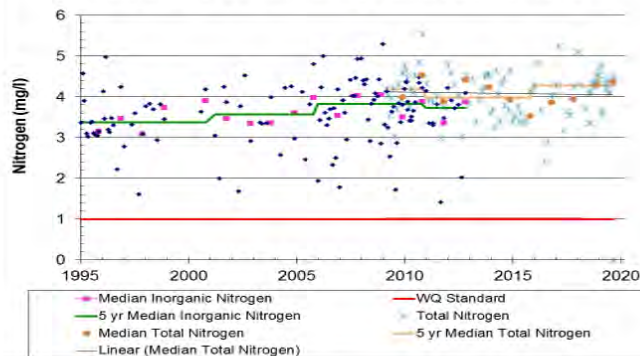
Christina River at Nottingham Rd., Rt. 273



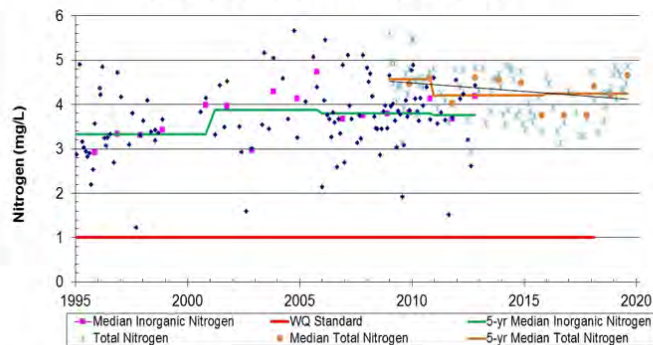
Brandywine Creek at Smith Bridge



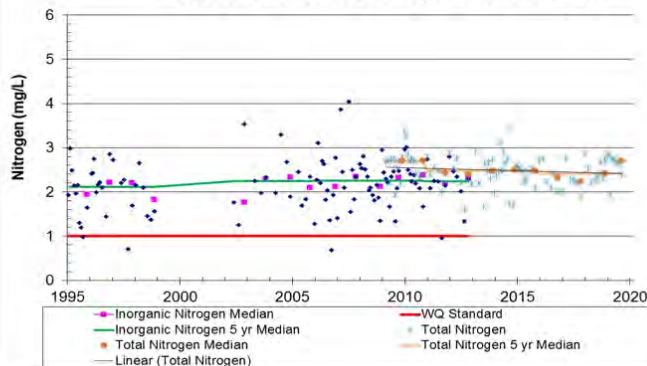
Red Clay Creek at Barley Mill Road, Ashland



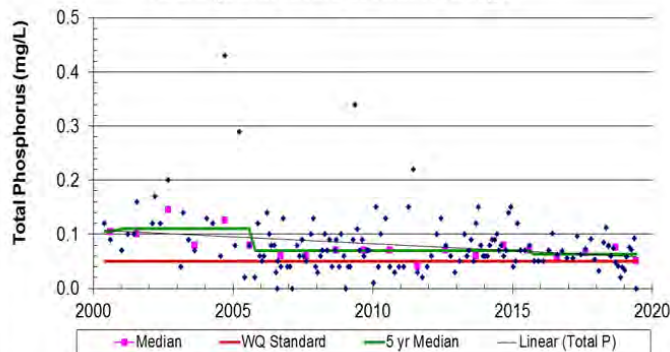
White Clay Creek at Chambers Rock Road



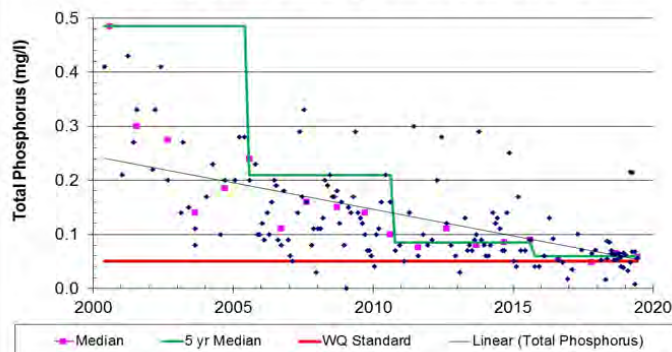
Christina River at Nottingham Rd., Rt. 273



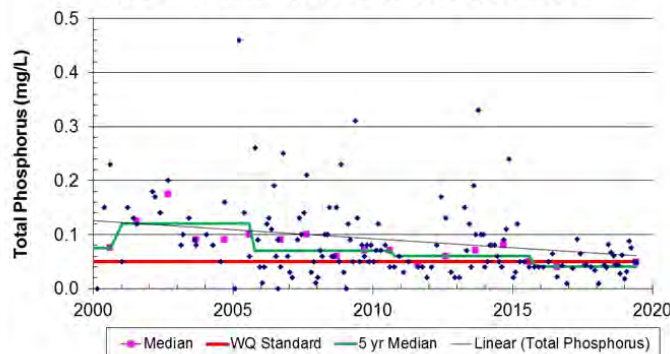
Brandywine Creek at Smith Bridge



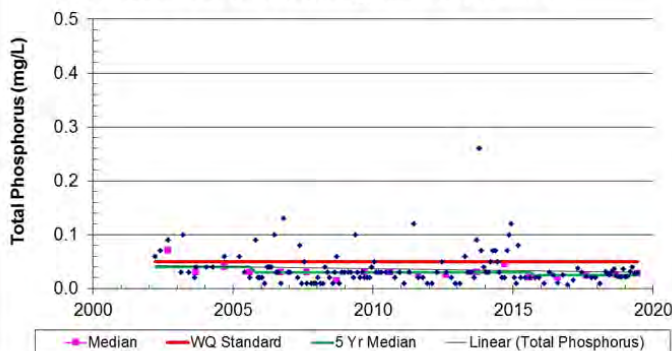
Red Clay Creek at Barley Mill Road, Ashland



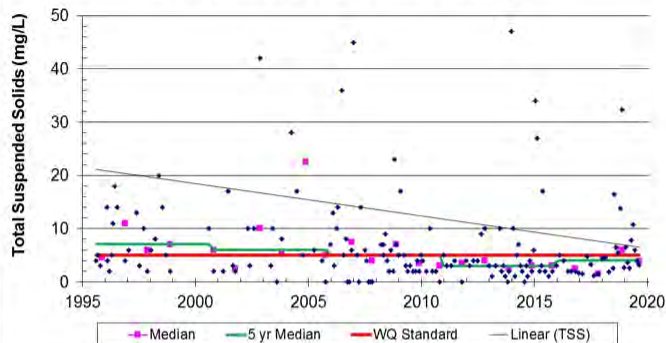
White Clay Creek at Chambers Rock Road



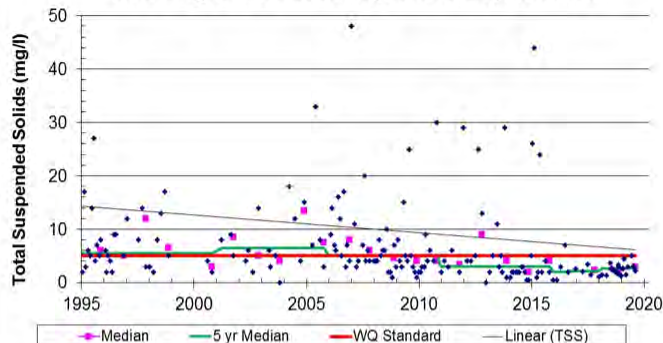
Christina River at Nottingham Rd., Rt. 273



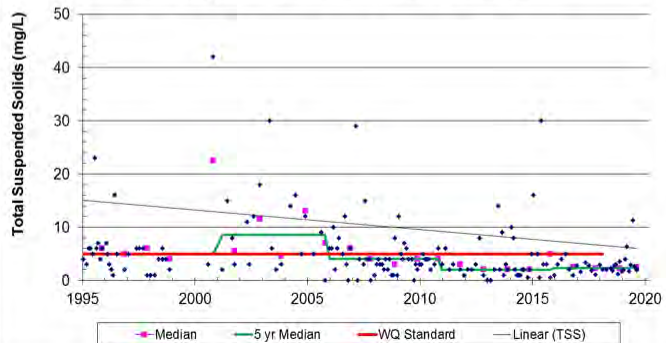
Brandywine Creek at Smith Bridge



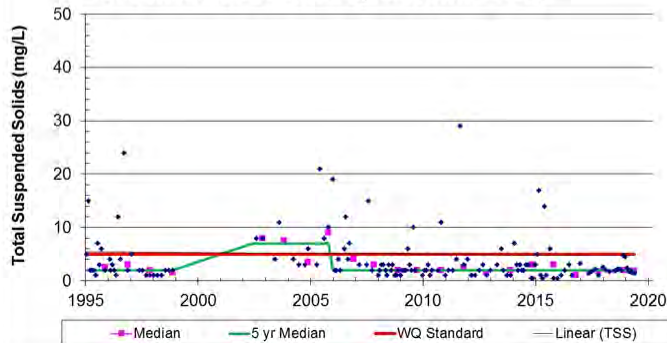
Red Clay Creek at Barley Mill Road, Ashland



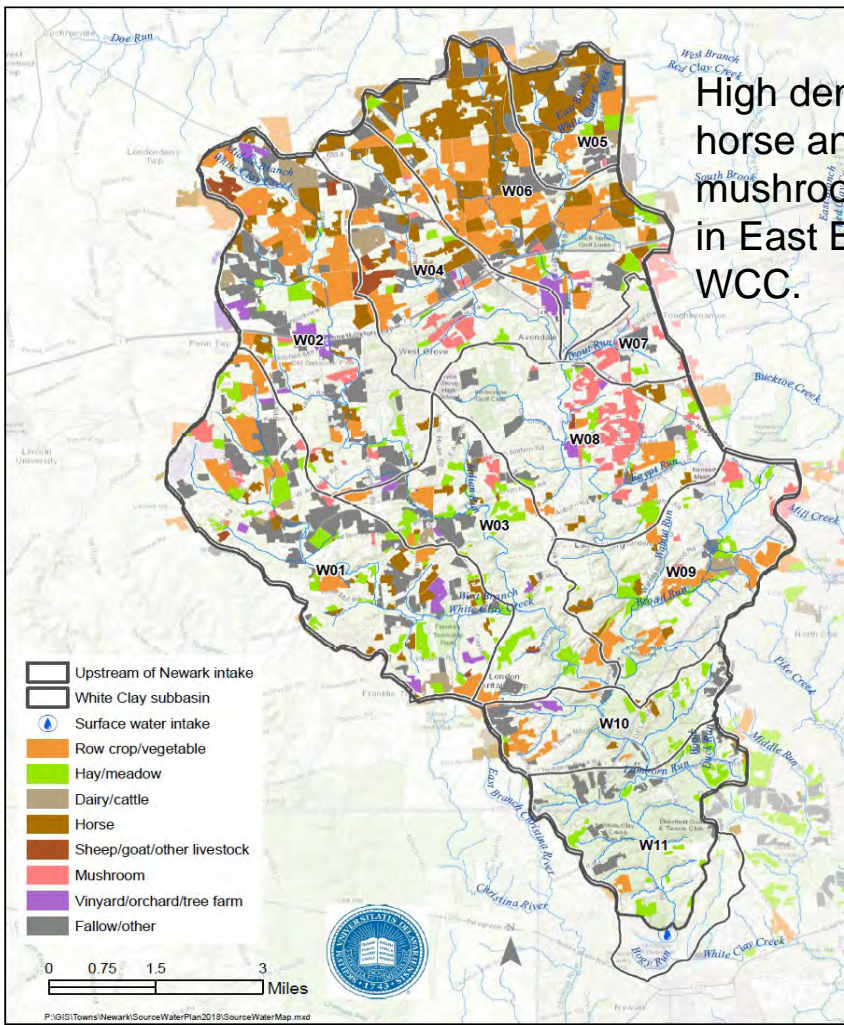
White Clay Creek at Chambers Rock Road



Christina River at Nottingham Rd, Rte 273



High density of horse and mushroom farms in East Branch WCC.



Above Newark Drinking Water Intake

