

National Wild & Scenic Rivers: America's Next Best Idea

Gerald Kauffman, UDWRC

Paul Kenney, National Park Service

Alan Hunt, Musconetcong Watershed Assoc.

Liz Shields, UDWRC

Andrew Homsey, UDWRC



10th Annual Delaware River Watershed Forum

A Decade on the Delaware: A Reflection on Yesterday, A Vision for Tomorrow

Thank you
Sponsors:



Meet Your Presenters



Gerald Kauffman
UDWRC
jerryk@udel.edu



Alan Hunt
MWA
alan@musconetcong.org



Andrew Homsey
UDWRC
ahomsey@udel.edu



Paul Kenney
NPS
Paul_Kenney@NPS.gov



Elizabeth Shields
UDWRC
evs@udel.edu

Housekeeping

- Please turn phones on silent
- Take care of your needs!
 - Feel free to use the restroom/get water as needed
 - If you need more transition time between sessions, feel free to leave when needed
- If you haven't yet, please download our event app! Search for CVENT in app store or scan the QR code posted around the event site
 - The app houses all important Forum info including upcoming sessions and room locations



The Network of Water Resources Research Institutes



Nationwide Rivers Inventory

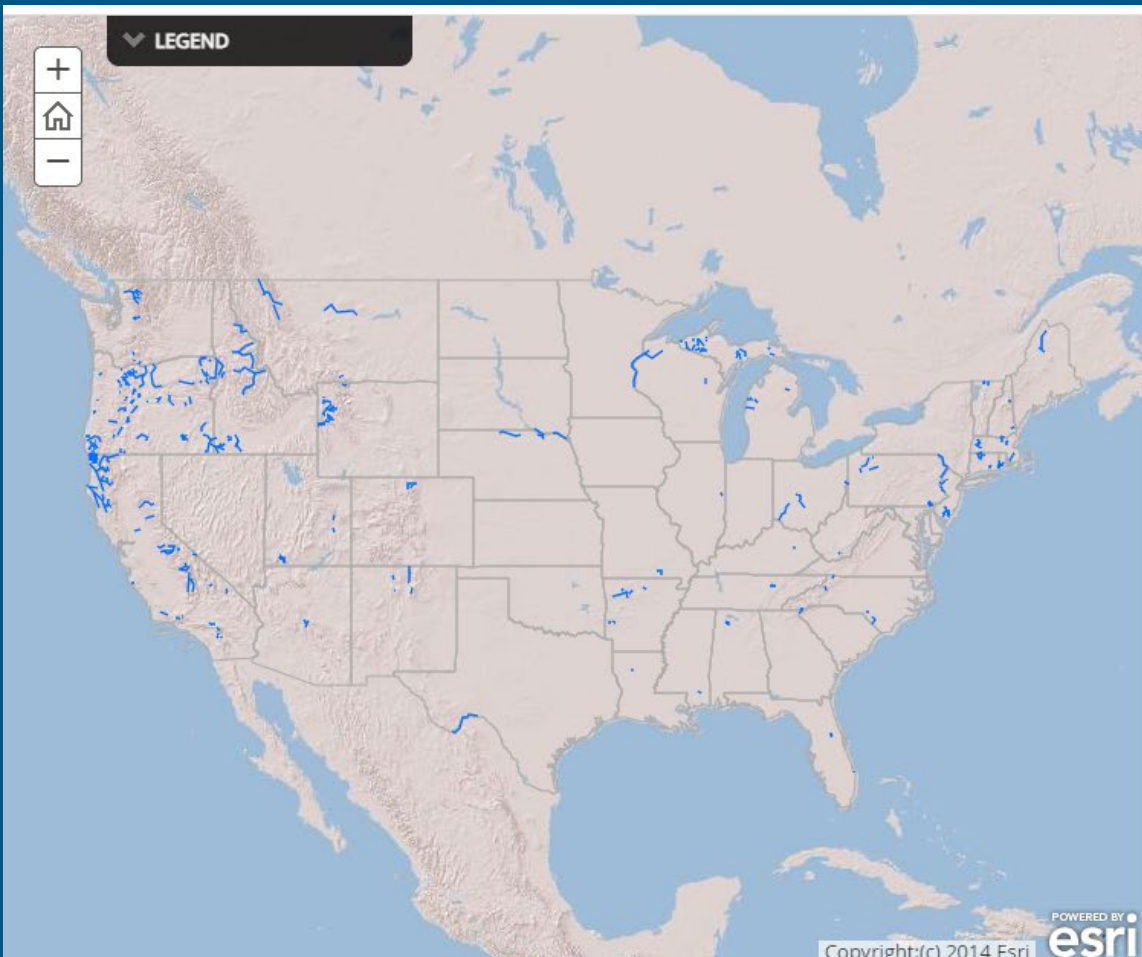


Nationwide Rivers Inventory

This is a listing of more than 3,200 free-flowing river segments in the U.S. that are believed to possess one or more "outstandingly remarkable" values.



[Home](#) | [Frequently Asked Questions](#) | [Website Policies](#) | [Contact Us](#)



National Wild and Scenic River System in the U.S.



Wild and Scenic Rivers

There are 226 national wild and scenic rivers in 40 States and the Commonwealth of Puerto Rico, totaling more than 13,412 miles (as of April 2019). This is a little more than one-quarter of one percent of the nation's rivers.

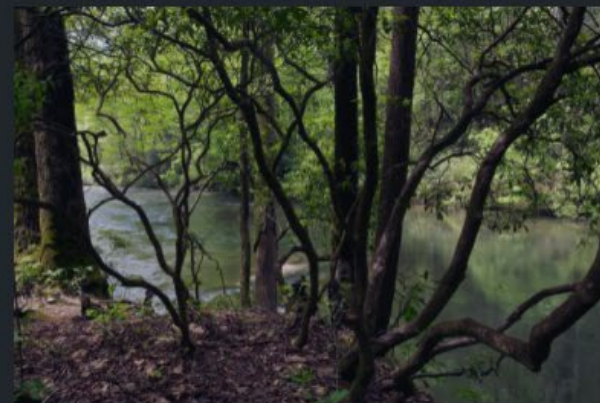


Photo (above) West Fork of the Chattooga River, Georgia and





Queonemysing,



Territories



Languages



Treaties

Search your address, or toggle switches above to add shapes. Click around! [Think critically about this map.](#)

Search

Territories ▾

Languages ▾

Treaties ▾

Manahoac

Nacotchtank
(Anacostan)

Doeg

Doeg

Susquehannock

Piscataway

Nentego (Nanticoke)

Piscataway

Susquehannock

Susquehannock

Nentego (Nanticoke)

Lənape Haki-nk
(Lenni-Lenape)

Lenapewihittuck

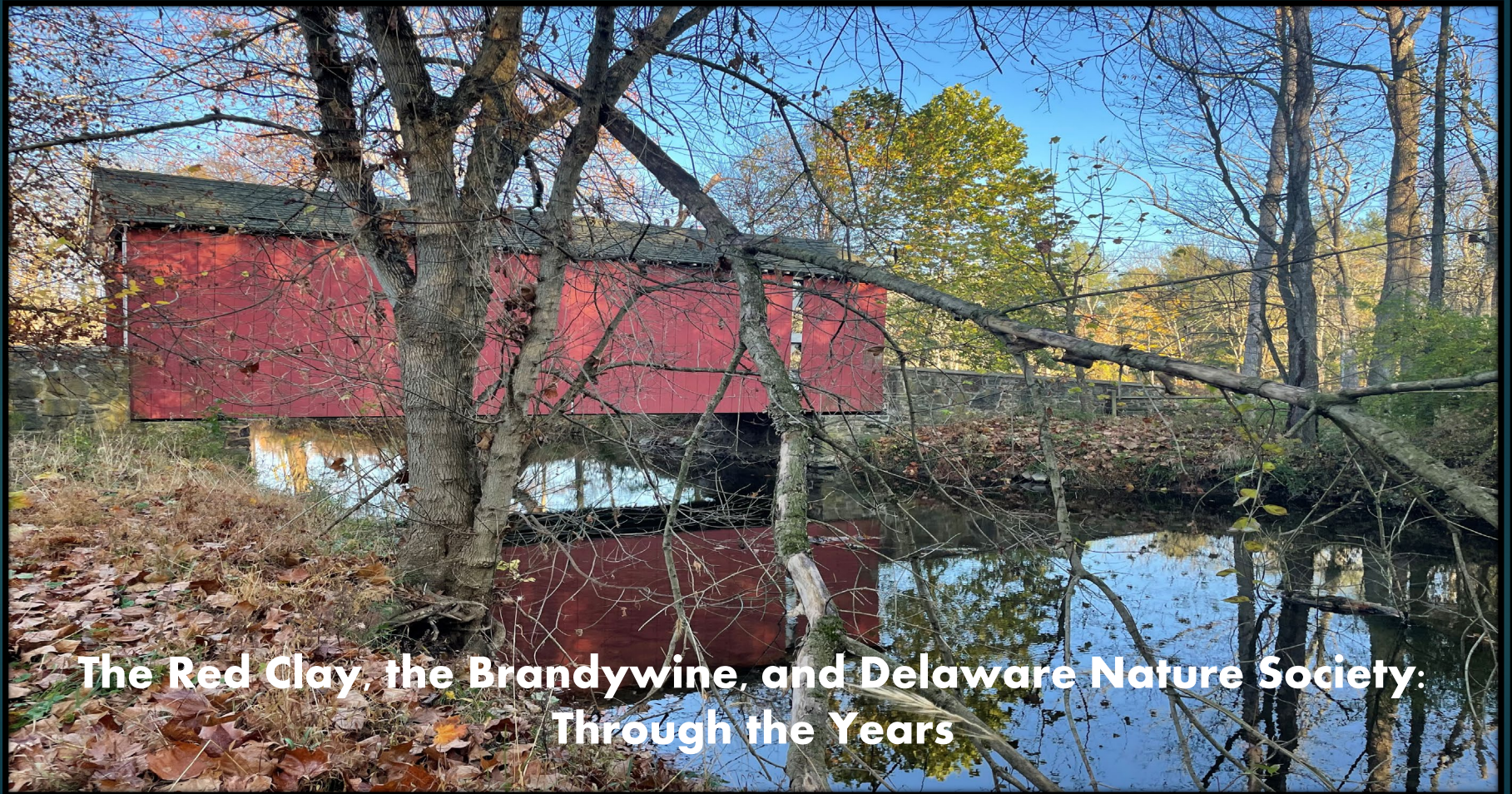
Lənape Haki-nk
(Lenni-Lenape)

Native lands in Delaware (Native Land Digital 2021)

Indigenous Waters

- **Lenapewihittuck: The Delaware River**
- **Queonemysing:** “place where there are long fish,” was a seasonal fishing village.
- In **1778**, the Lenape (the Delaware) was the first nation to sign a treaty with the new Continental Congress.
- **Suspecough:** “at the muddy pond”. **Wawaset:** “near the winding bend”.
- **Fiskiekjilenin:** “fishkill.”
- **Brannvin:** A potato or barley liquor after the Old Barley Mill built by a 17th century Swedish surgeon near present day Market Street in Wilmington.
- **White Clay Creek – Swapecksiska:** The name comes from the indigenous Lenape name Swapecksiska which the Dutch later adapted to Hwitlerskil (Dunlap 1956).
- **Red Clay Creek - Hwiskakimensi Sippus:** Lidestrom’s Map (1654-1655) as Hwiskakimensi Sippus, a Lenape name meaning “young tree stream.”

•



The Red Clay, the Brandywine, and Delaware Nature Society: Through the Years

Welcome to The Partnership Wild and Scenic River Brandywine / Red Clay Creek Study Exploration

River Connections Video

Trailer:

<https://wildandscenicfilmfestival.org/film/river-connections>

Full Video:

<https://www.nps.gov/orgs/1912/partnership-wild-and-scenic-rivers.htm>

America's National Wild and Scenic Rivers

- Comprise one-half of one percent of the nation's river miles
- 209 rivers are designated, with Oregon containing about ¼ of them
- Are mostly found flowing through federal land (FS, NPS, BLM, FWS)
- The Forest Service manages the most WSRs, and the NPS manages 64

Osprey Program - MAUR



10 Years
Coalition for the Delaware River Watershed

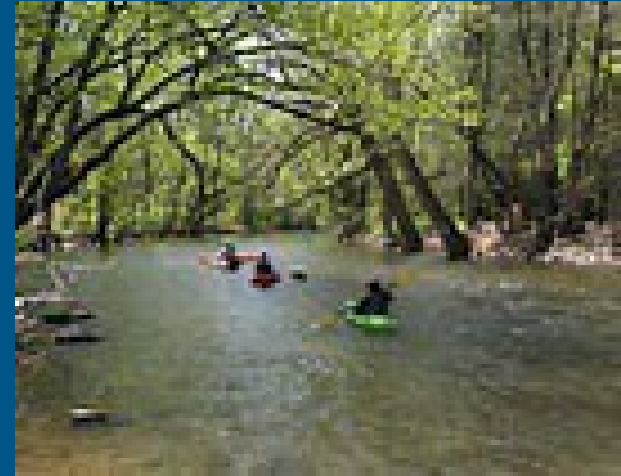
Of the 64 NPS Wild and Scenic Rivers, 16 are "Partnership WSRs"



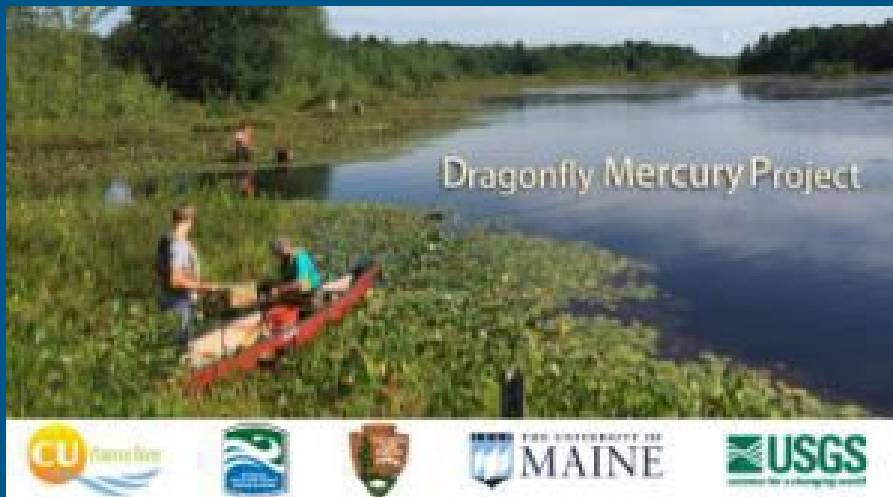
National Wild & Scenic Rivers Act, 1968 (P.L. 90-542)

The NWSRA Protects WSRs':

- Free-flowing Condition
- Water Quality
- Outstandingly Remarkable Values (ORVs)



Musconetcong River (NJ)



CU-Maurice River – Dragonfly
Mercury Project - 2017



OR

Vs

Wild & Scenic River Values - **Outstandingly Remarkable Values (ORVs)**: Specific, valued resources that are unique, rare, or exemplary, and are identified for protection in a management plan or designation legislation. ORVs typically include cultural resources, T&E species, geologic features, recreation, and scenery.



Maurice Wild
and Scenic
River (NJ)



NPS Partnership Wild and Scenic Rivers



- Partnership Wild and Scenic Rivers are managed locally, through an agreement among a local river management council, environmental non-governmental organizations (NGOs), and the National Park Service.
- A management plan, developed during a Wild and Scenic River Study, guides the management of the river and describes river partner roles.
- The NPS advises the river management council and provides funding to implement the river management plan.

Two different Mgmt. Models for Wild & Scenic Rivers

Federally Managed WSRs

- Primarily flow through federal land
- Managed as “units” of the BLM, FS, USFWS, and National Park Service
- Superintendent, Forest Manager Rangers/Law Enforcement
- Directly manage recreation
- Can involve federal acquisition
- Federal leadership and control
- Sometimes no fishing/hunting

Partnership Managed WSRs

- Primarily flow through private land and involve Local Management
- NPS in a *support* role
- Local, state, land Use Management protects river
- No Law Enforcement Rangers
No federal land acquisition
No federal land condemnation
- State/local fishing/hunting/boating rules unchanged
- Locally developed Mgmt. Plan

Partnership Wild & Scenic Rivers Management Model



River Council –
Comprised of local,
county governments,
residents

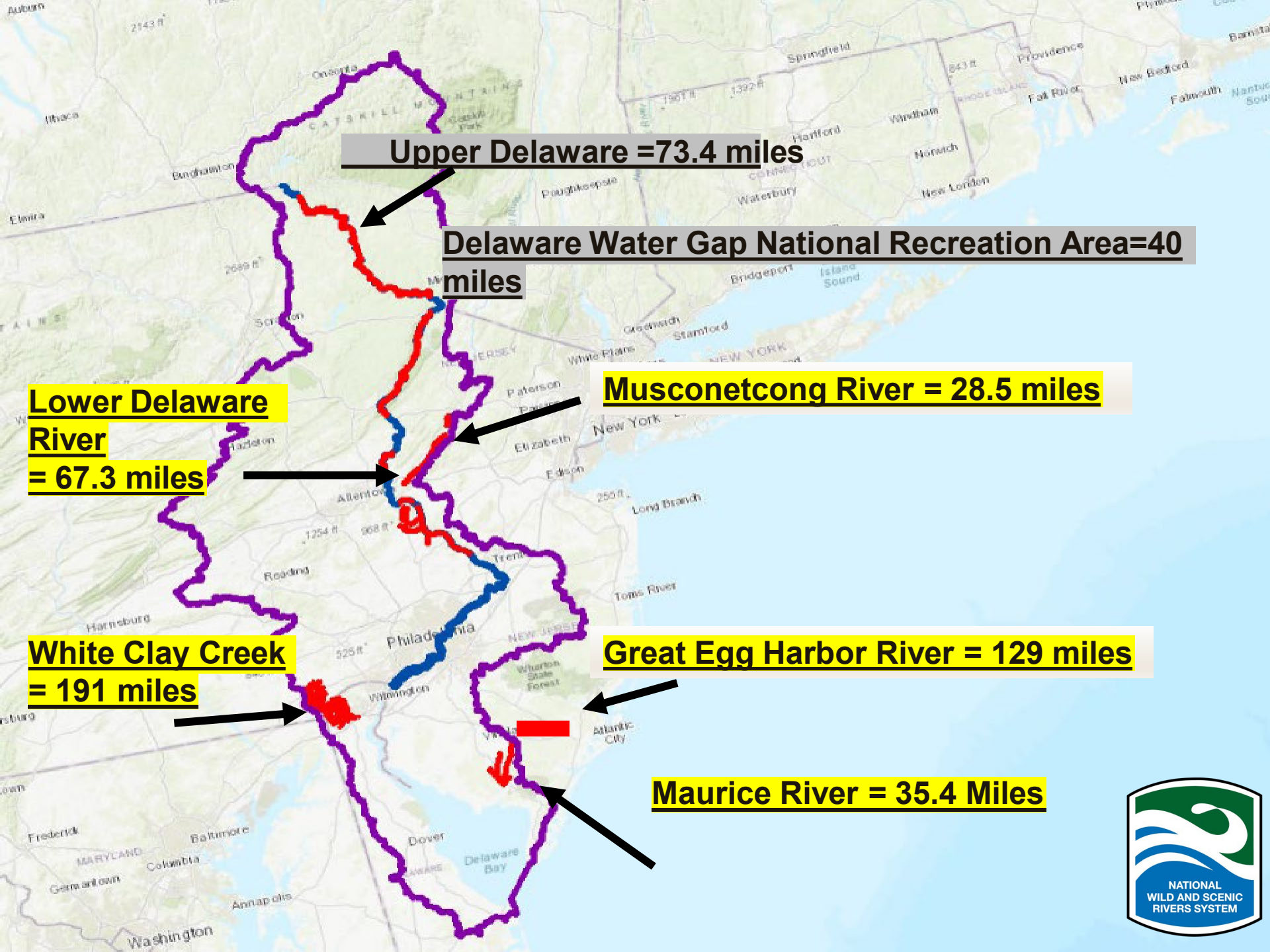
**River Administering
NGO(s) - Cooperative
Agreement (Usually
watershed NGO)**



(Osprey Program – GREG)

**NPS - River
Administering
federal agency**





Upper Delaware = 73.4 miles

Delaware Water Gap National Recreation Area = 40 miles

Lower Delaware River = 67.3 miles

Musconetcong River = 28.5 miles

White Clay Creek = 191 miles

Great Egg Harbor River = 129 miles

Maurice River = 35.4 Miles

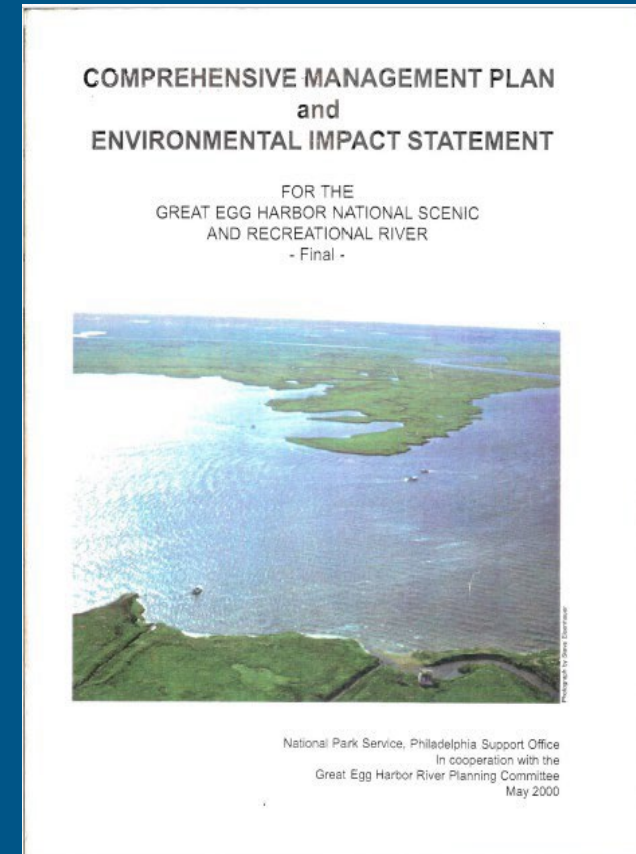


Typical Partnership Wild & Scenic River Study Process

- Study Committee formed after Study bill enacted
- Subcommittees address study topics: (3-year time limit)
 - **Eligibility Evaluated** = free flow, WQ, ORVs
 - **Suitability Evaluated** = protection measures, support for designation
 - **River Management Planning** = river boundaries, roles for NPS & local interests, goals & objectives for resource management
- Study Report sent to Congress for designation consideration

River Management Plan Development

- WSR Values/ORVs, Goals, Objectives
- Directly developed by local volunteers
- Roles for Partner Entities identified and described
- Management Alternatives Developed
- Cooperation with Local and State Governments
- Identifies Local/State Regulatory Authorities
- Describes NPS Section 7 Responsibility



Post Designation – Partnership Wild & Scenic River Management



Great Egg Harbor
Watershed Assoc's
River debris Mgmt.
Program – With
River Council
Volunteers





(GREG River Council)

River Council Role

- Regularly scheduled meetings
- Stimulates cooperation and coordination
- Provides discussion/resolution forum for river issues
- Coordinates implementation of the River Mgmt. Plan
- Independent of NPS and NGOs
- Links NGOs and NPS directly to local governments



Non-Governmental Organization (NGO) Role in Partnership Wild & Scenic River Management

- Serves as the primary river partner in the execution of a Cooperative Agreement with the NPS, in consultation with the River Council, consistent with the Management Plan
- Organizes and administers regularly scheduled River Council Meetings
- Often provides river restoration, interpretation, recreation, research and education services directly to the public
- Maintains direct connection to the NPS in between River Council Meetings
- Receives direct funding from the NPS

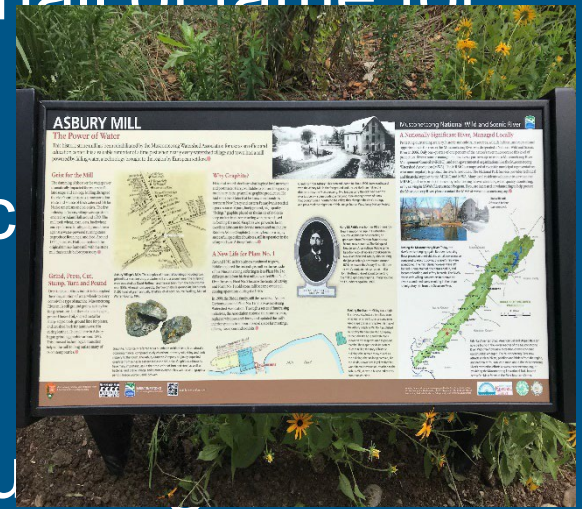
National Park Service Role in Partnership Wild & Scenic River Management

- Prevents river construction within the bed and banks from having adverse impacts on river values (Section 7, Wild & Scenic Rivers Act).
- Serves as the federal liaison to the Local River Council (doesn't have a vote), and advises the council on river management issues.
- Helps fund River Management Plan implementation
- Serves in a support role for River Management Plan implementation.



General Benefits of WSR Designation

- National recognition / prestige / hall of fame for rivers
- Makes grant applications more competitive
- Can improve CWA protections
- NPS support/direct assistance/funding
- Prevents new dam construction
- Prevents instream construction's adverse impacts on river values



Specific Benefits of Wild and Scenic River Designation – Musconetcong WSR Example

- Riverwatcher Program
- Jr. Ranger Program
- NZM Plan & Implement Comm.
- River Restoration Committee
- Volunteer Program
- River Interpretive Signage
- Real-Time WQ Monitoring
- Program Walks, Talks
- School Classroom Program
- 5 Dams Removed, 2 Planned
- \$ 200k in NPS funding 2021
- \$ 680K in leveraged grants 2021
- 10 years of building and management



Lenape Wayside Dedication -MUSC



More Information on NPS Partnership WSRs

<https://www.nps.gov/orgs/1912/partnership-wild-and-scenic-rivers.htm>

Great Egg Harbor River

www.gehwa.org

Maurice River

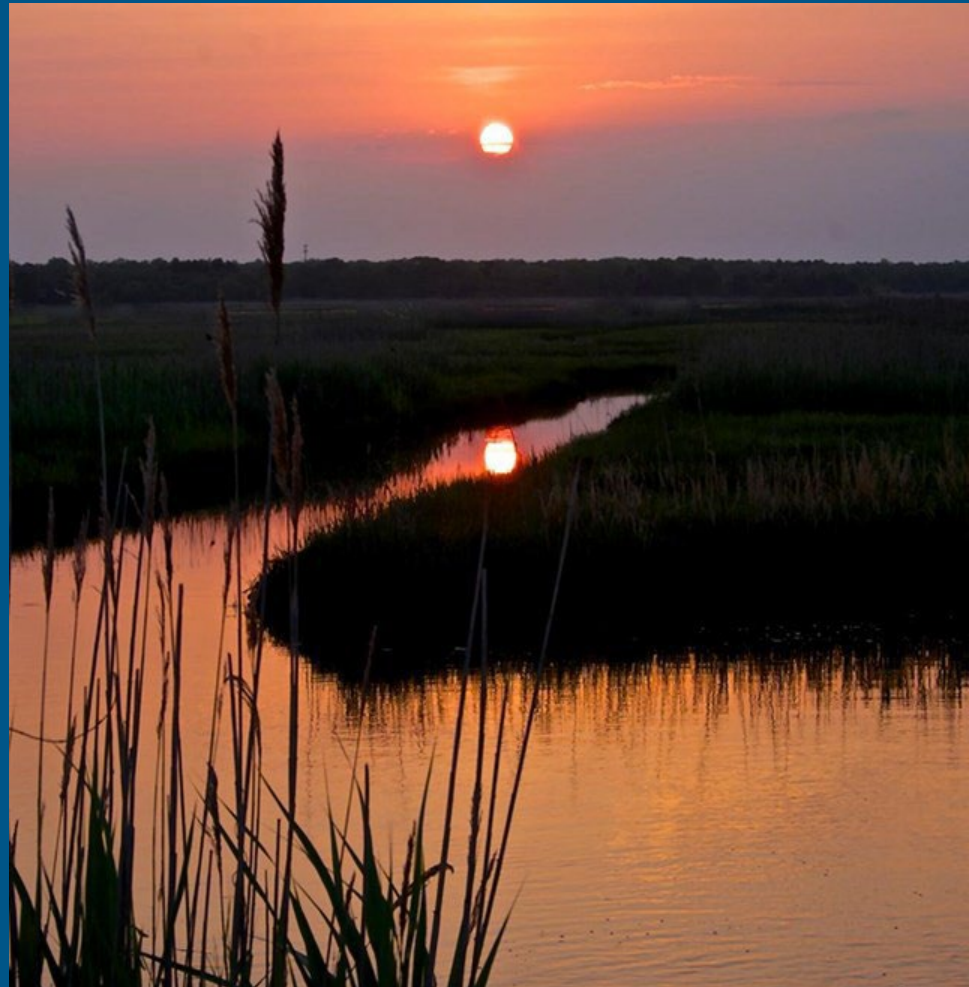
www.cumauriceriver.org

Musconetcong River

www.musconetcong.org

White Clay Creek

www.whiteclay.org





Questions?

For **non-advocacy** questions, contact:
Paul Kenney, River Manager
Partnership Wild & Scenic Rivers Program
Great Egg Harbor, Maurice and Musconetcong Rivers (NJ)

Email: Paul_Kenney@nps.gov

Phone/text: (610) 203-4248

WILD AND SCENIC RIVER MANAGEMENT IN PRACTICE



Alan R. Hunt, Ph.D.

Director, Policy & Grants, Musconetcong Watershed Association

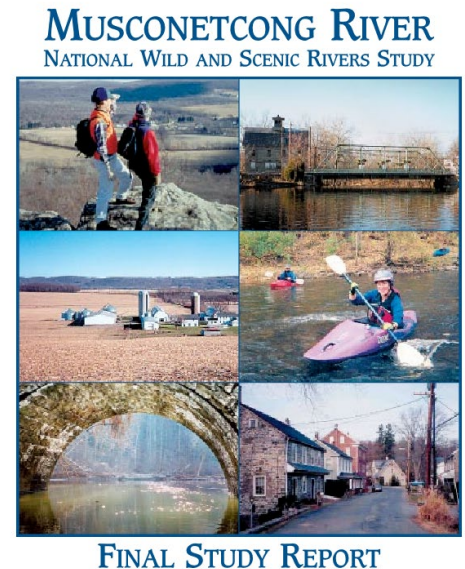
... River Administrator, Musconetcong River Management Council

alan@musconetcong.org



Wild & Scenic River Study Process

- Wild & Scenic River Feasibility Study – 1998 – 2004
 - Resident Survey
 - Community workshops
 - Water Quality a top issue
- 2003 – NJDEP issued a bacteria TMDL for the entire Musconetcong River
- Pre-designation “lull”
 - 2005 - Partner organization applied for a 319(h) non-point source pollution grant to use Microbial Source Tracking to ID bacteria source types
- Wild & Scenic River Designation – December 22, 2006



Prepared by:
Musconetcong Advisory Committee
Musconetcong Watershed Association
Heritage Conservancy
National Park Service

June 2004

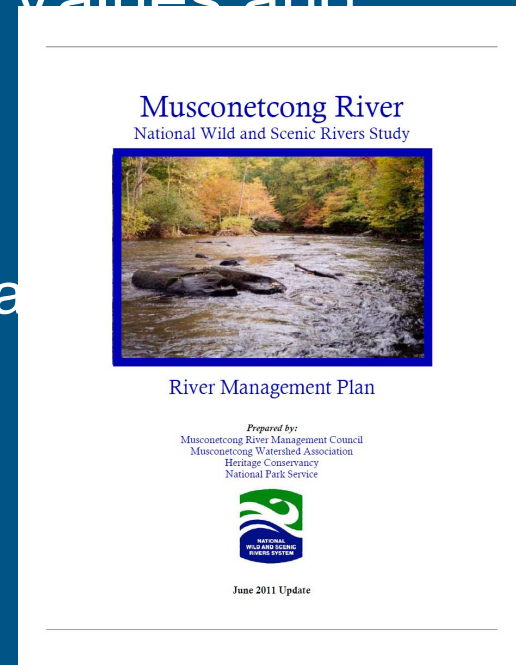
The River Management Council: Purpose and Responsibilities

Purpose:

- Share in responsibility to protect and enhance the river's Outstandingly Remarkable Values and implement River Management Plan

Roles:

- Non-regulatory
 - National Park Service has the only regulatory
- Advisory
- Work with partners and volunteers



The River Management Council: Composition

Voting Members

- Municipalities along the designated segments appoint representatives
 - Other upstream municipalities may
- Non-governmental organizations

Sometimes Voting or Non-voting

- Counties, Regional Commissions,

The Public

- Council publicly advertises meeting
- Open attendance



How?

Working in partnerships

- Advisory role
- Facilitating information exchange and resource coordination
- Promoting & educating about resources
- Providing a venue for collective action and conflict resolution



The River Management Council: Advisory Role

River Management Council

- Gathers and shares information on projects with impact to the River
- Works with local governments to have zoning, open space plans, and bridge projects that maintain or enhance the river's values
- Venue to share information

Cooperating Partner

- Assesses projects for potential impact (negative or beneficial) or benefit to water, scenic, historical, recreational and other values
 - Conducts public records requests
 - Shares with NPS
 - Shares with River Management Council
 - Prepares and submits comments
- Invites speakers/presenters



STOP The New Zealand Mudsnail In the Musconetcong River!

1st NEW JERSEY RECORD

A tiny invasive snail spreads to rivers by hitchhiking on waders, boats and fishing gear. Stop it getting into nearby streams.

40,000,000 SNAILS AT ONE SITE AFTER 3 YEARS FROM ONE FEMALE SNAIL

CLEAN YOUR WADERS
TO PROTECT NJ TROUT STREAMS

INSPECT	TREAT	DRY
your gear carefully Snails hide in treads & socks	Remove debris Rinse with potable water	waders completely

Avoid using felt soled waders See website for best treatment options Dry for 72 hours before using in other streams

Visit www.musconetcong.org for information about the New Zealand Mudsnail in our watershed

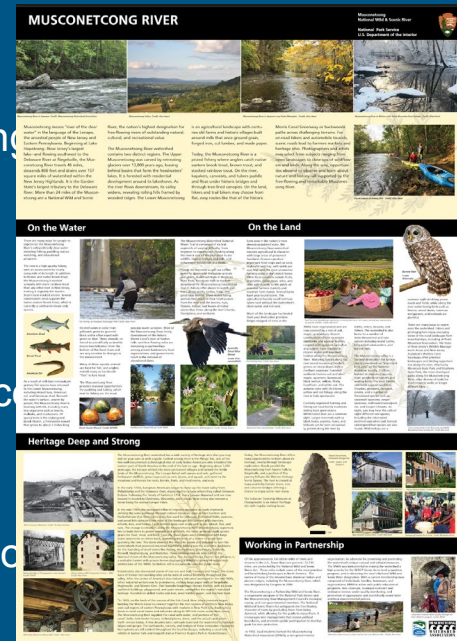
The River Management Council: Information Exchange and Resource Coordination

River Management Council

- Share and coordinate resources
- Support for funding applications through demonstrating community support
 - Resolutions
 - Letters of support
 - Pre-existing relationships with municipal and county officials

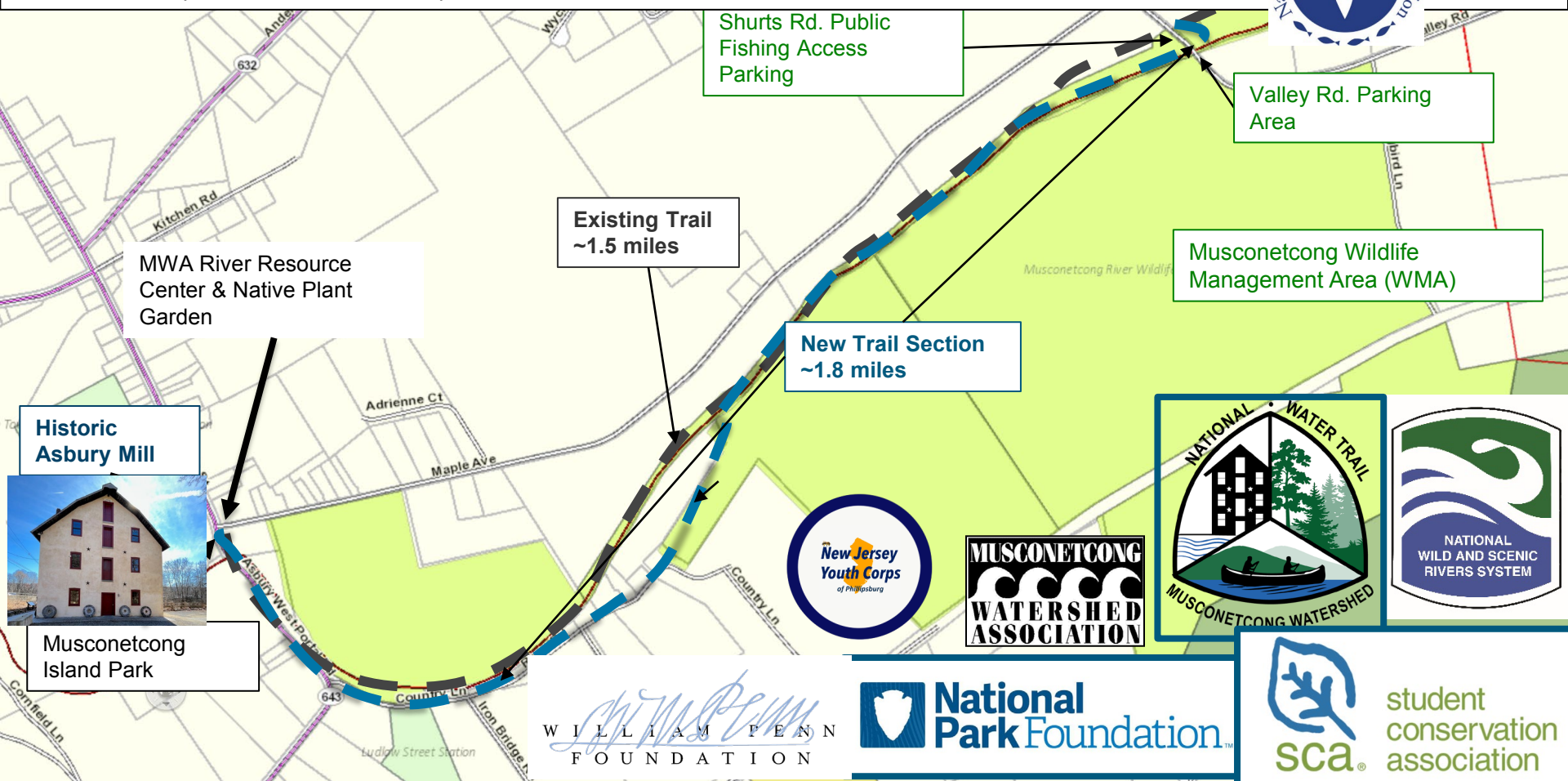
Cooperating Partner

- Coordinate resources between River Management Council members and other external partners
 - Example: Musconetcong National Water Trail application
- Ability to access NPS funding opportunities
 - Recreation, Trail, and Conservation Assistance Program
 - NPS Challenge Cost Share
 - National Park Foundation grants



Linking Up the Landscape Project – DWCF 2021

Musconetcong Education Trail Loop
Franklin Township and Bethlehem Townships, NJ



The River Management Council: Promotion & Education

River Management Council

- Promote recreation and river conservation within the community
- Share information to educate public on resource concerns
 - e.g. Invasive New Zealand Mud Snail decontamination techniques

Cooperating Partner

- Promotes the Wild & Scenic River
 - Media outreach
 - Signage
 - Provides Information on Recreational Access & Private Property
- Education and Outreach Programming
 - In-school education
 - Talks, hikes, paddles
 - etc.



The River Management Council: Forum for Collective Action & Conflict Resolution

River Management Council

- Forum to address recreational access management:
 - Identify opportunities to expand access
 - Respond to overuse or negative use
 - Ensure private property rights are protected
- Protect and Enhance Water Quality

Cooperating Partner

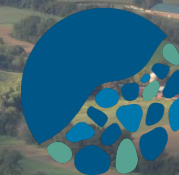
- Planning: Provides input to Plans for Open Space, Recreation, and Economic Development
- Protect and Enhance Water Quality
 - Water Quality Monitoring
 - River Restoration





Questions?

Alan Hunt, Musconetcong Watershed
Association, alan@musconetcong.org



Coalition for the
**Delaware River
Watershed**

Methodology in the Red Clay & Brandywine

Eligibility and Suitability
evaluations for NRI
listings

- Analyze and record
ORVs
- Identify local partners

Make *recommendations*

Prepare *report* for NPS



Methodology in the Red Clay & Brandywine

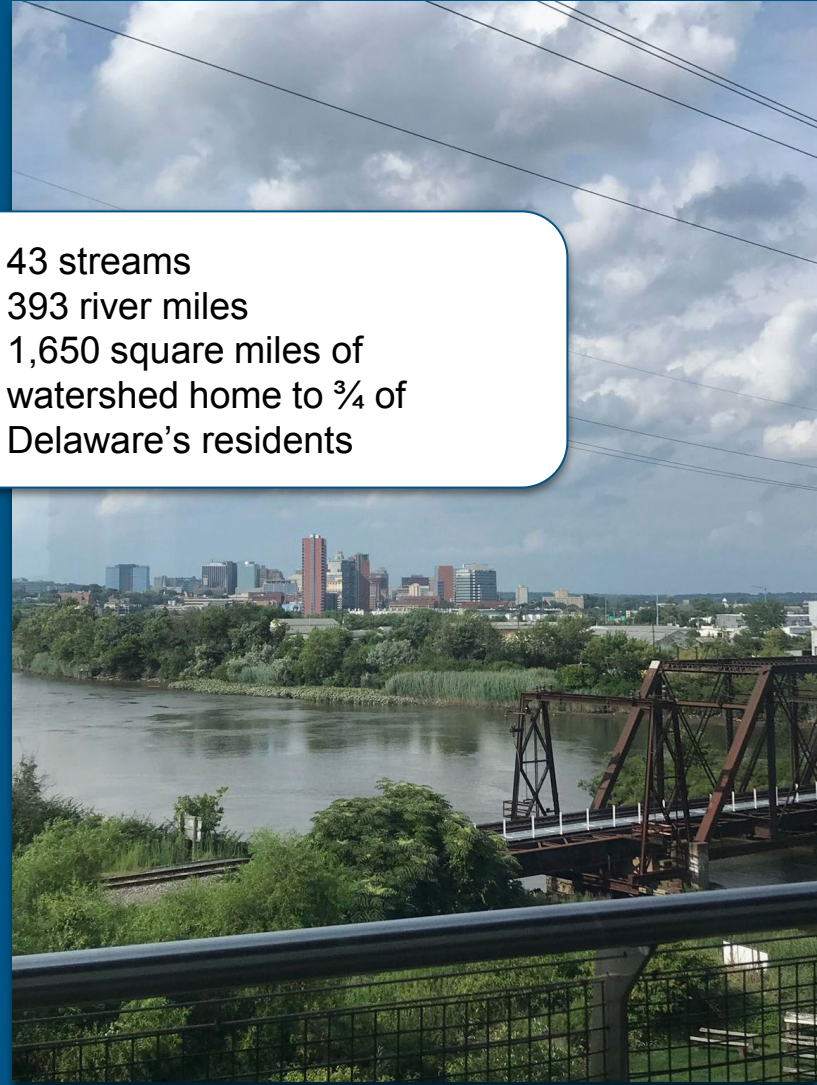
Eligibility and Suitability
evaluations for NRI
listings

- Analyze and record
ORVs
- Identify local partners

Make *recommendations*

Prepare *report* for NPS

- 43 streams
- 393 river miles
- 1,650 square miles of
watershed home to $\frac{3}{4}$ of
Delaware's residents



Methodology in the Red Clay & Brandywine

Eligibility and Suitability evaluations for NRI listings

- Analyze and record ORVs
- Identify local partners

Make *recommendations*

Prepare *report* for NPS

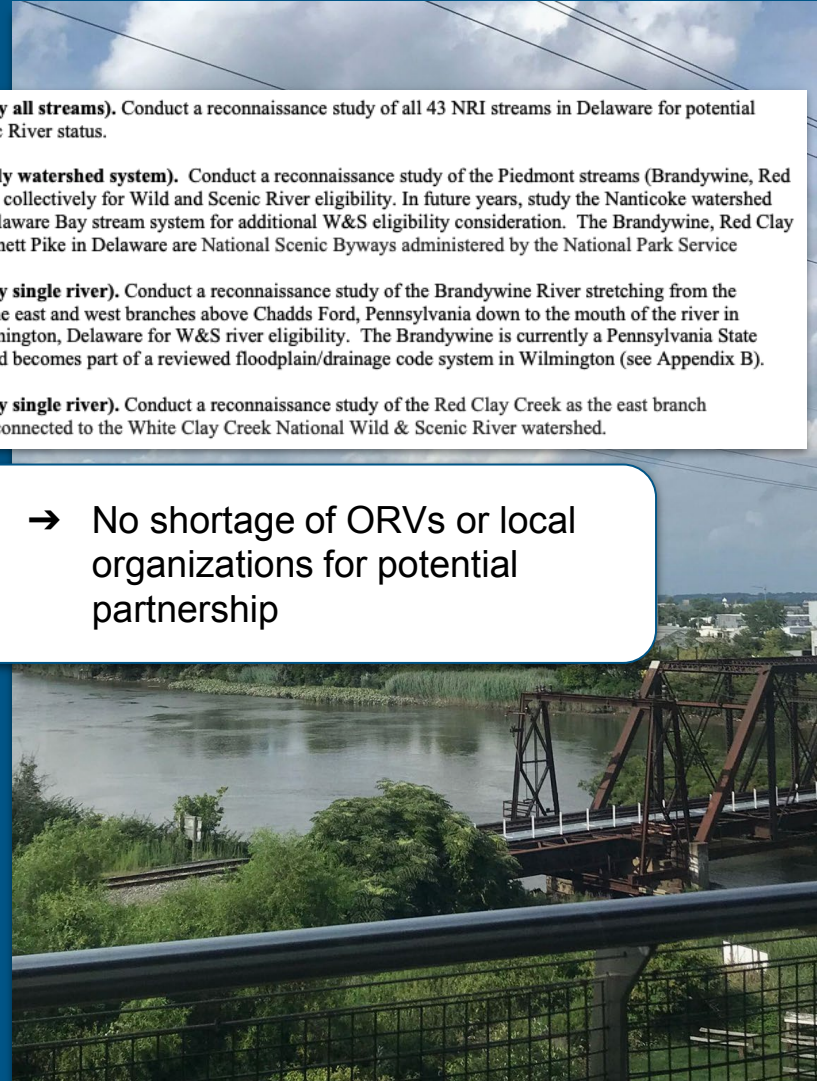
Option 1 (Study all streams). Conduct a reconnaissance study of all 43 NRI streams in Delaware for potential Wild and Scenic River status.

Option 2. (Study watershed system). Conduct a reconnaissance study of the Piedmont streams (Brandywine, Red Clay, Christina) collectively for Wild and Scenic River eligibility. In future years, study the Nanticoke watershed and then the Delaware Bay stream system for additional W&S eligibility consideration. The Brandywine, Red Clay Creek, and Kennett Pike in Delaware are National Scenic Byways administered by the National Park Service

Option 3 (Study single river). Conduct a reconnaissance study of the Brandywine River stretching from the confluence of the east and west branches above Chadds Ford, Pennsylvania down to the mouth of the river in downtown Wilmington, Delaware for W&S river eligibility. The Brandywine is currently a Pennsylvania State Scenic River and becomes part of a reviewed floodplain/drainage code system in Wilmington (see Appendix B).

Option 4 (Study single river). Conduct a reconnaissance study of the Red Clay Creek as the east branch hydrologically connected to the White Clay Creek National Wild & Scenic River watershed.

→ No shortage of ORVs or local organizations for potential partnership



Methodology in the Red Clay & Brandywine

Eligibility and Suitability
evaluations for NRI
listings

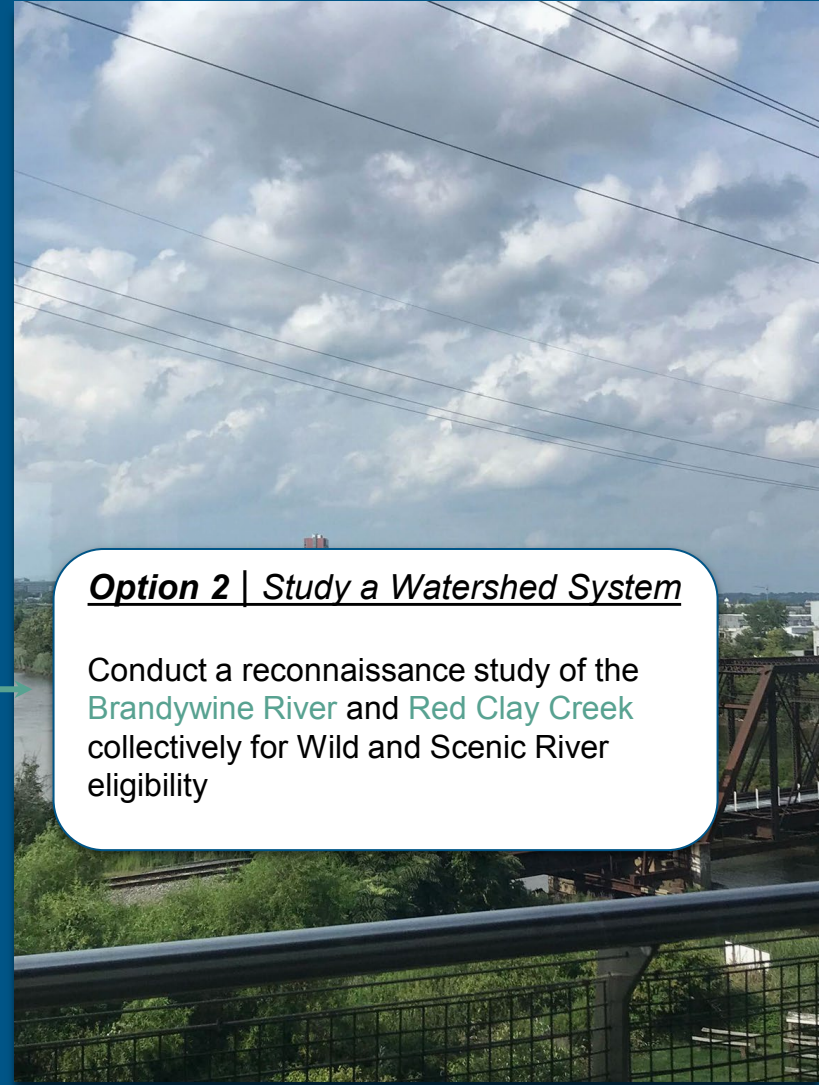
- Analyze and record ORVs
- Identify local partners

Make *recommendations*

Prepare *report* for NPS

Option 2 | Study a Watershed System

Conduct a reconnaissance study of the **Brandywine River** and **Red Clay Creek** collectively for Wild and Scenic River eligibility



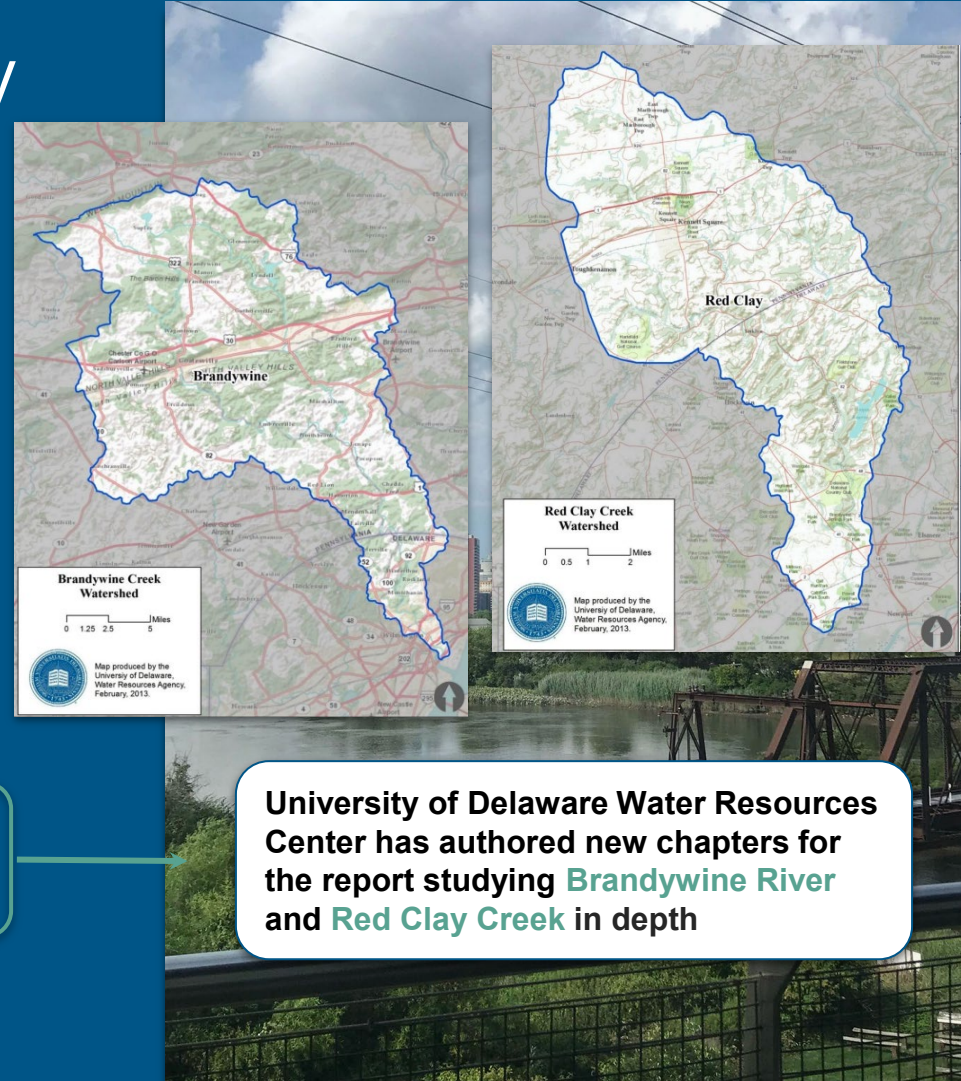
Methodology in the Red Clay & Brandywine

Eligibility and Suitability
evaluations for NRI
listings

- Analyze and record
ORVs
Identify local partners

Make *recommendations*

Prepare *report* for NPS



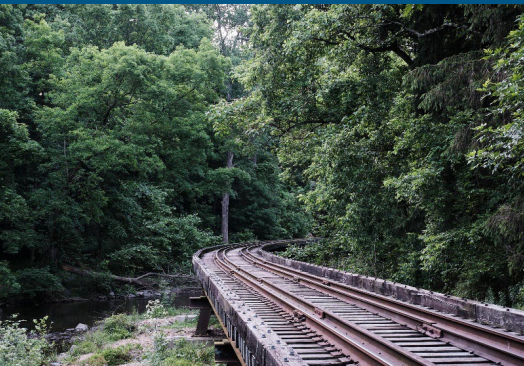
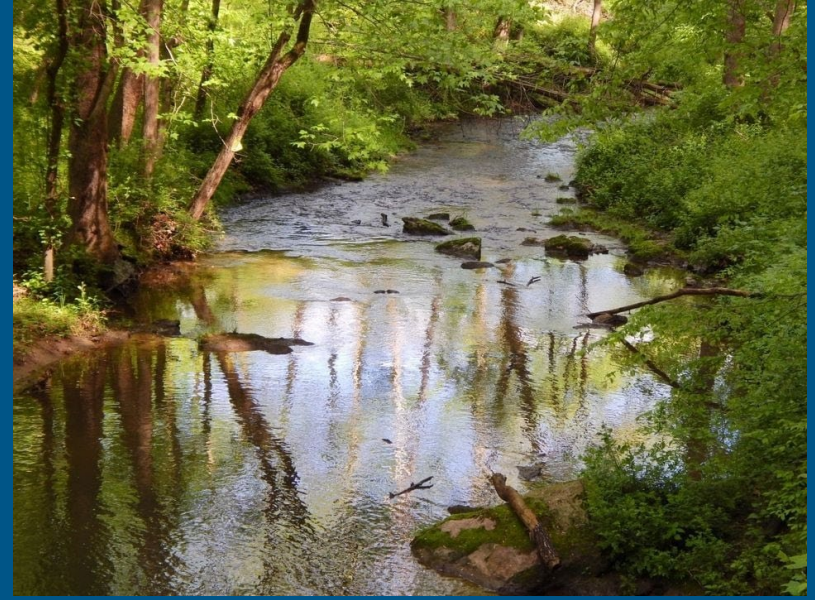
University of Delaware Water Resources Center has authored new chapters for the report studying **Brandywine River** and **Red Clay Creek** in depth

Methodology in the Red Clay & Brandywine

View the report [here](#)

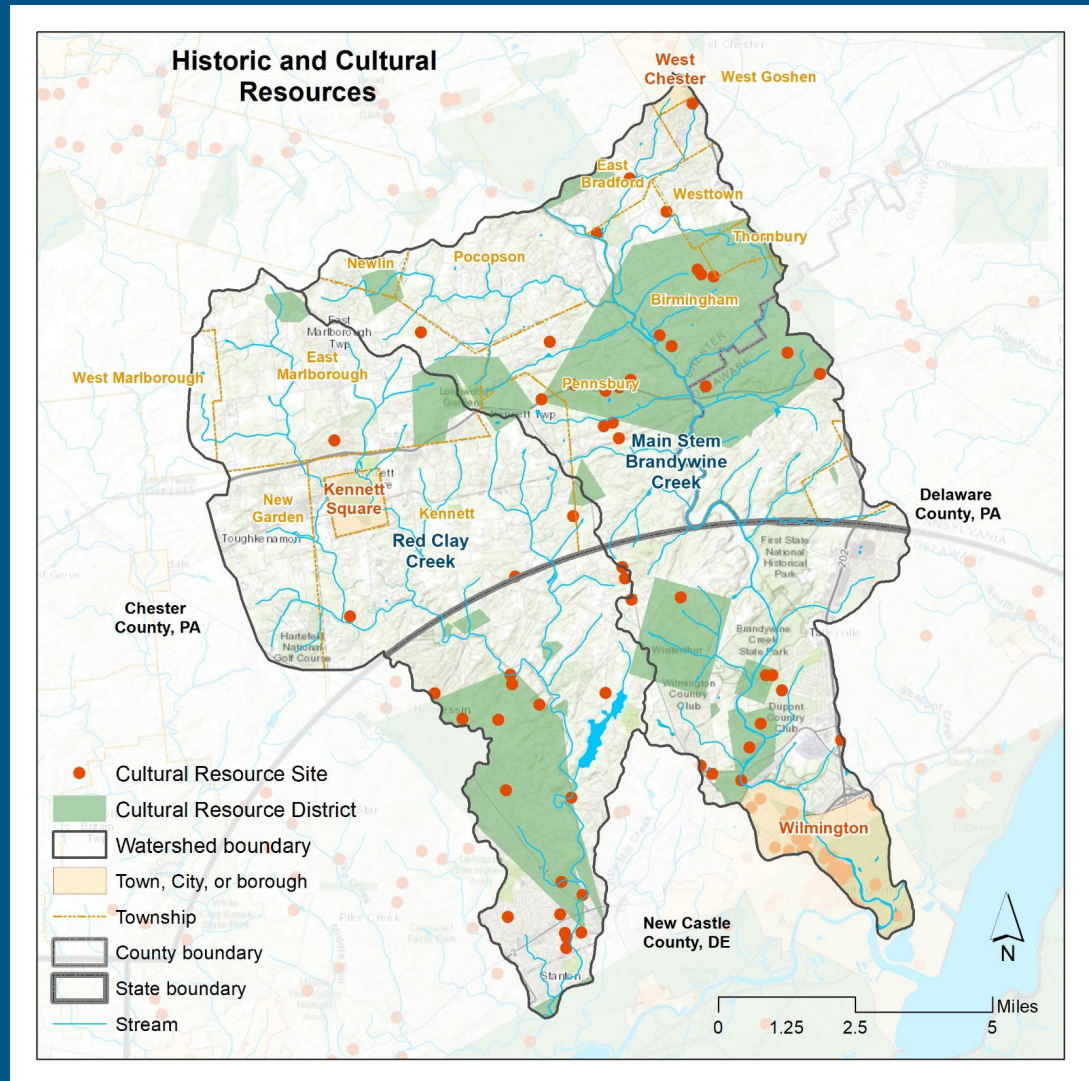


Red Clay and Brandywine

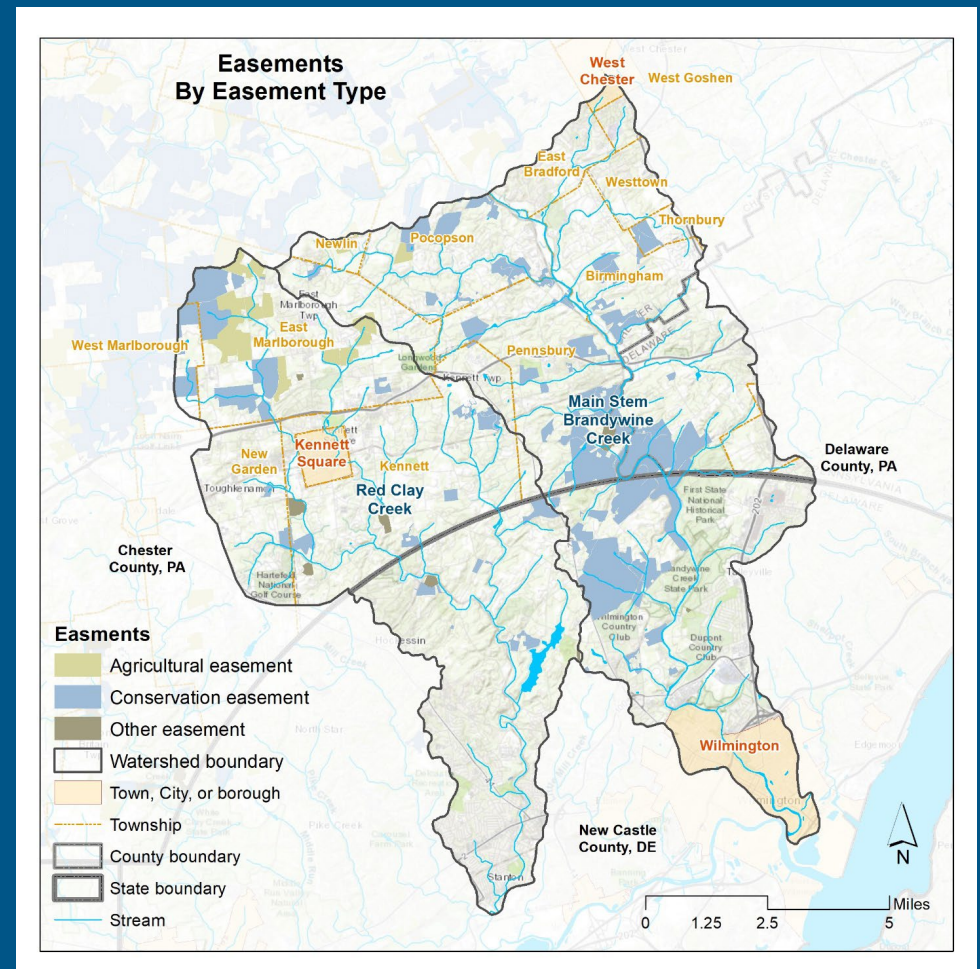


Eligibility

- Outstandingly Remarkable Values (ORVs)
 - Underground Railroad
 - Brandywine Battlefield
 - Red Clay Creek Scenic Byway
 - Washington-Rochambeau National Historic Trail
 - Industrial heritage (du Pont mills)
 - Immigration history



- Open and protected spaces
 - Fee owned
 - Eased Lands



“Other” Factors

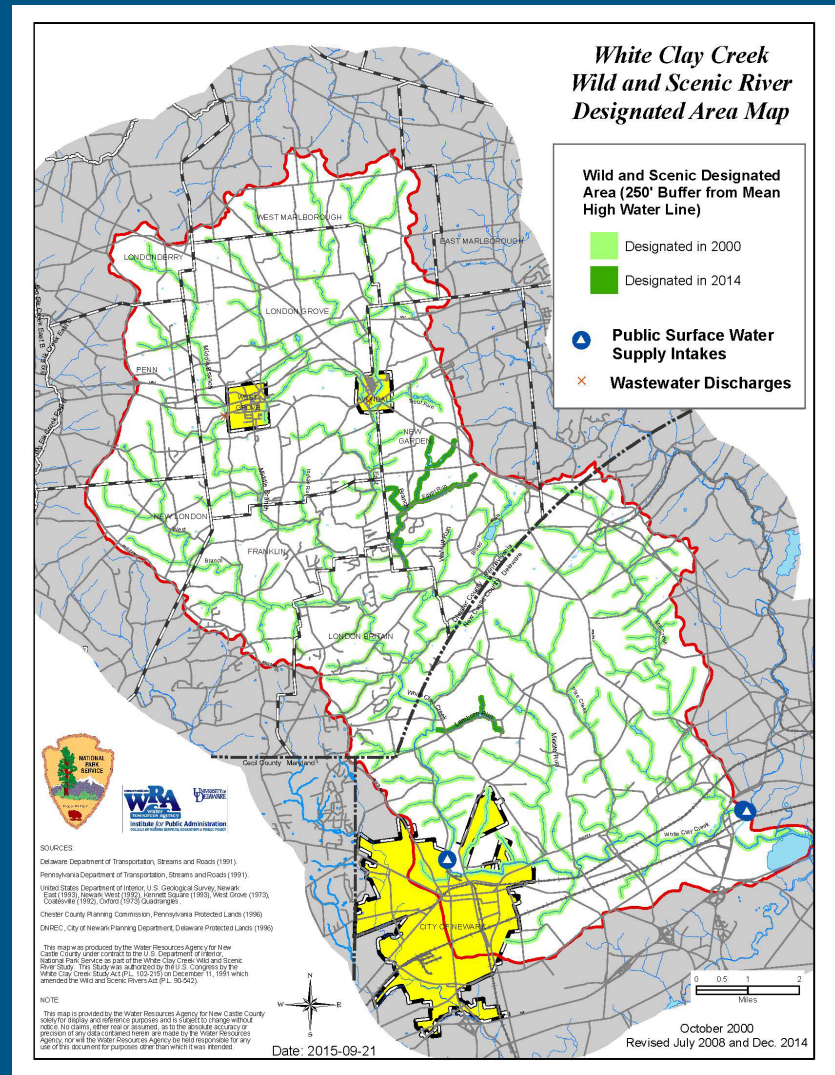
- NPS: Expand scope of the program
 - Diversity and equity
 - Recreation/access
 - Focus on culture/historical ORVs
 - Waters and populations in traditionally underrepresented landscapes



Partnership Model

- Brandywine Red Clay Alliance
- Brandywine Conservancy
- Delaware Nature Society
- The Nature Conservancy
- Coalition for the Delaware River Watershed
- Christina Basin Clean Water Partnership
- Other partners (partial potential list)
 - Civic League for New Castle County (DE)
 - Christina Watersheds Municipal Partnership (PA)
 - Wilmington & Western Railroad
 - Historic Brandywine Village
 - Many locally-based foundations

- Existing Partnership Wild & Scenic River System:
 - White Clay Creek
 - NPS Support
 - River Administrator
 - Steering Committee

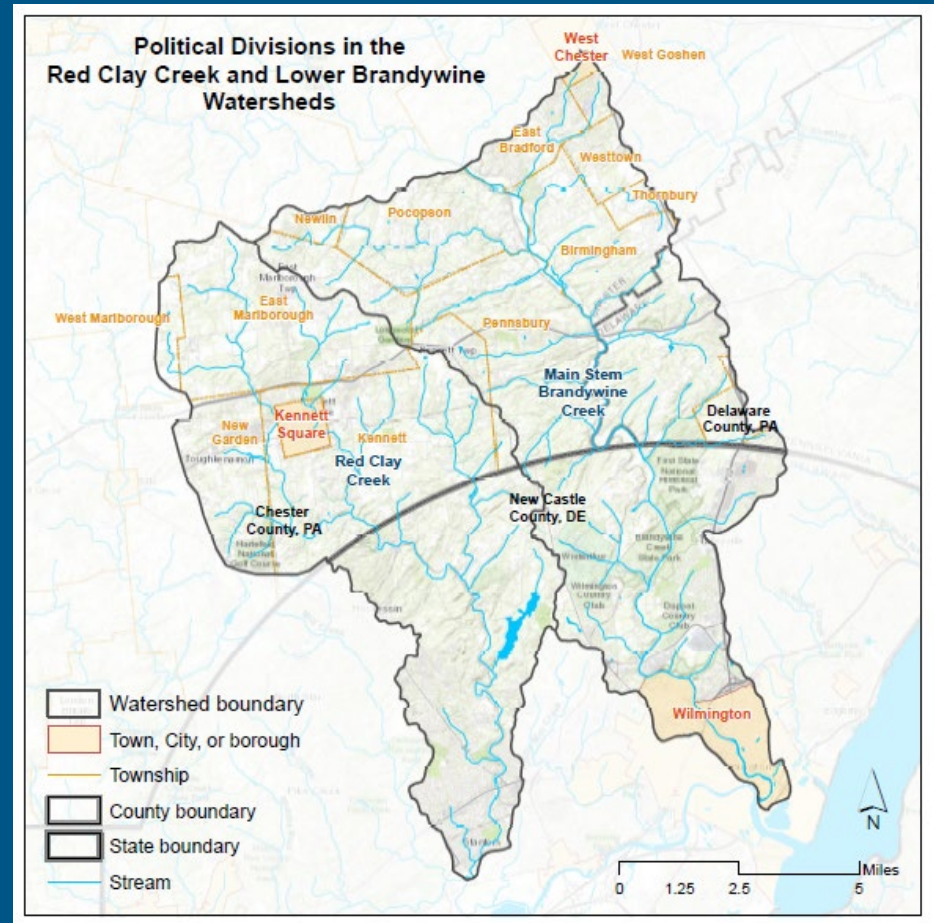


Suitability: Public/Private Partnerships

- Mt. Cuba Center
- Ashland Nature Center
- Longwood Gardens
- Hagley Museum
- Winterthur Museum, Gardens, and Library
- First State National Park (NPS)
- Brandywine Battlefield Park

Governmental Jurisdictions

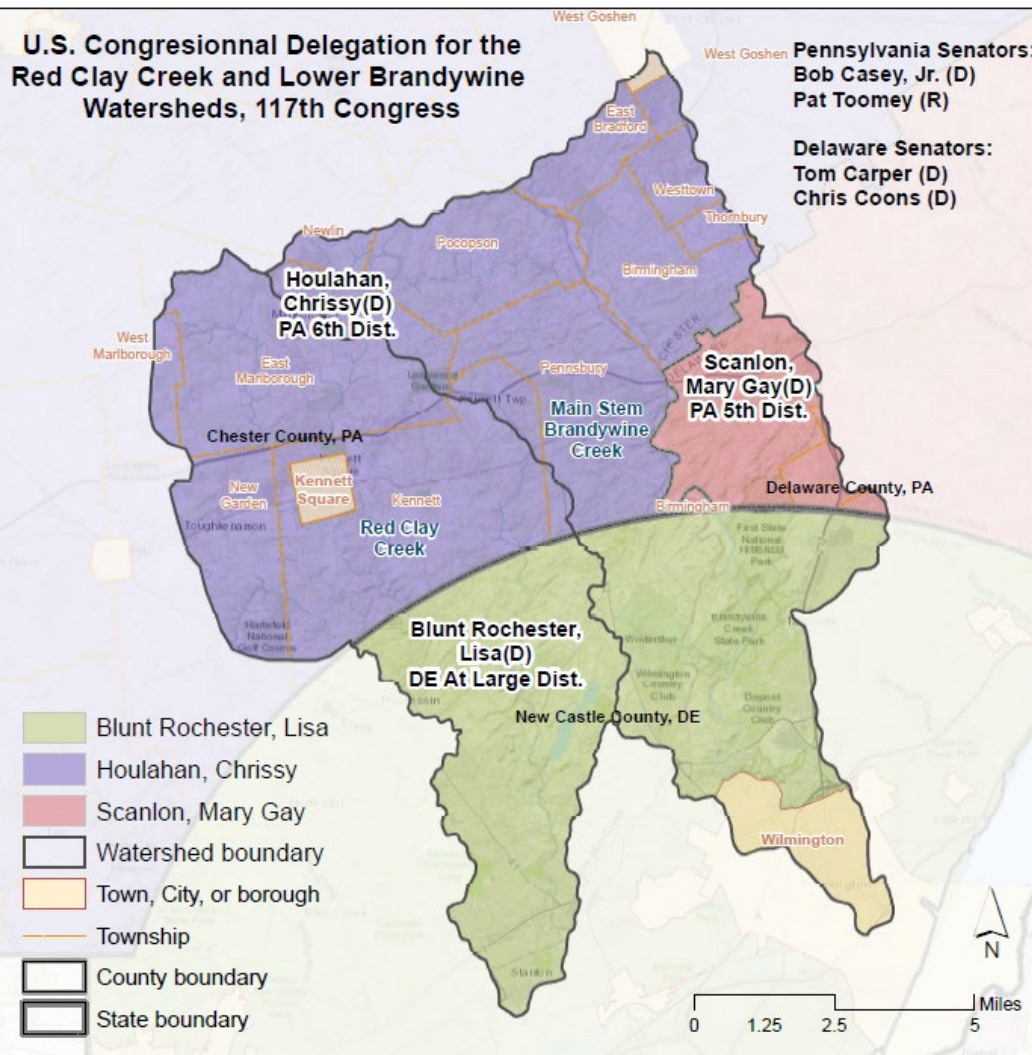
- Intergovernmental and interstate coordination and cooperation
 - New Castle County, DE
 - City of Wilmington, DE
 - Chester/Delaware County PA
 - PA Townships and Boroughs
- Strong political support

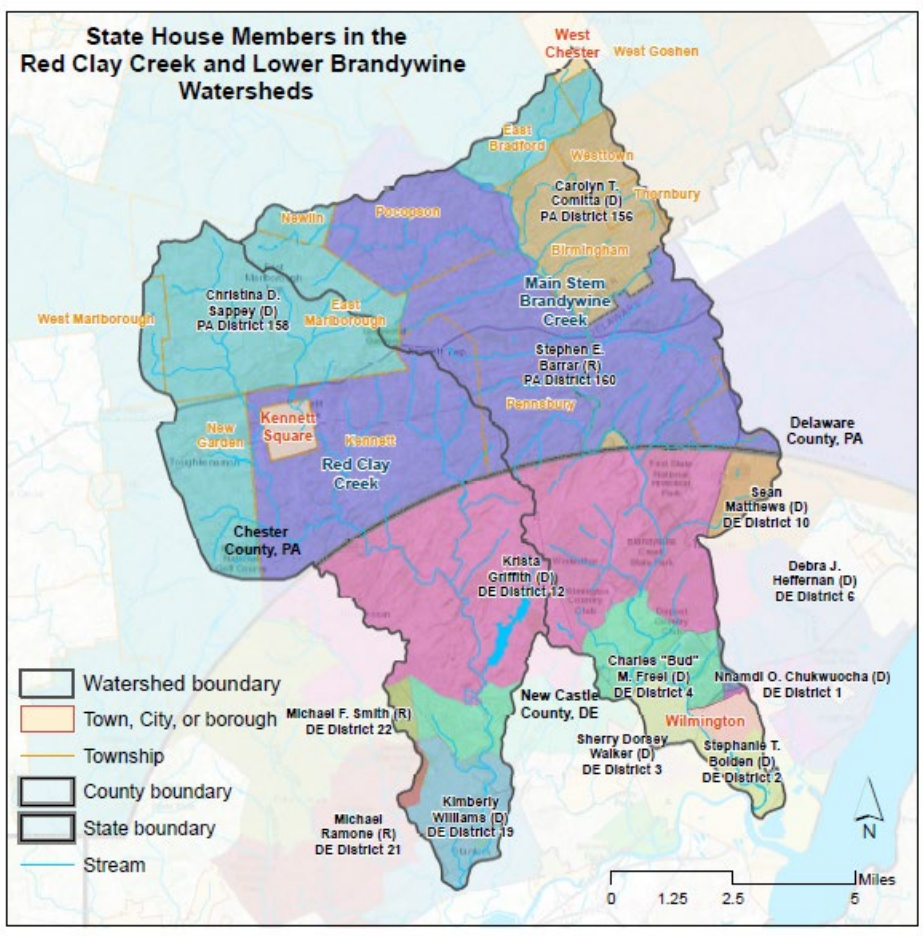


**U.S. Congressional Delegation for the
Red Clay Creek and Lower Brandywine
Watersheds, 117th Congress**

Pennsylvania Senators:
Bob Casey, Jr. (D)
Pat Toomey (R)

Delaware Senators:
Tom Carper (D)
Chris Coons (D)





Regulatory Framework

- New Castle County Unified Development Code (UDC)
- Stormwater Programs
 - NPDES
 - Stormwater Utility
- Delaware Division of Historical and Cultural Affairs/SHPO
 - Strong historic and preservation ethic
- Wilmington Planning Department and Historic Preservation Office
 - City historic districts
 - High levels of protection



Thank you for joining us!

Give feedback on this session and find your next session on the CVENT Attendee Hub!

Please dispose of your trash and return chairs to their original position upon leaving.



Join the conversation on social media! Tag @DelRivCoalition with #DelRivForum2022!



10th Annual Delaware River Watershed Forum

A Decade on the Delaware: A Reflection on Yesterday, A Vision for Tomorrow

Thank you
Sponsors:

